



Mornington Terrace

London, NW1

Asking Price £1,395,000

A fantastic three bedroom garden maisonette a short walk from Regent's Park! This stylish apartment, measuring in excess of 1300 sq. ft. is offered in excellent condition and boasts three bedrooms, two bathrooms, reception leading out to the private garden - and a fully fitted kitchen. Furthermore, there is a study, garden studio and ample storage. Share of freehold.



Mornington Terrace

London, NW1

- Three bedrooms
- Two bathrooms
- Separate study
- Garden studio
- Very well presented
- A short walk to Regents Park



Very well located at the northern end of Mornington Terrace. The excellent local amenities of Camden and Primrose Hill are on your doorstep. The green open spaces of both Regent's Park and Primrose Hill are on your doorstep.

Tenure: Share of Freehold with a lease of 89 years remaining.

Service Charge: TBC

Ground Rent: £0

Local Authority: London Borough Of Camden

Council Tax Band: D

Energy Efficiency Rating		Current	Potential
Very energy efficient - lower running costs	A		
(92-100)	B		
(81-91)	C	74	79
(69-80)	D		
(55-68)	E		
(39-54)	F		
(21-38)	G		
Not energy efficient - higher running costs			
England, Scotland & Wales		EU Directive 2002/91/EC	

Chestertons Camden & Kentish Town Sales

99-101 Parkway

Camden

London

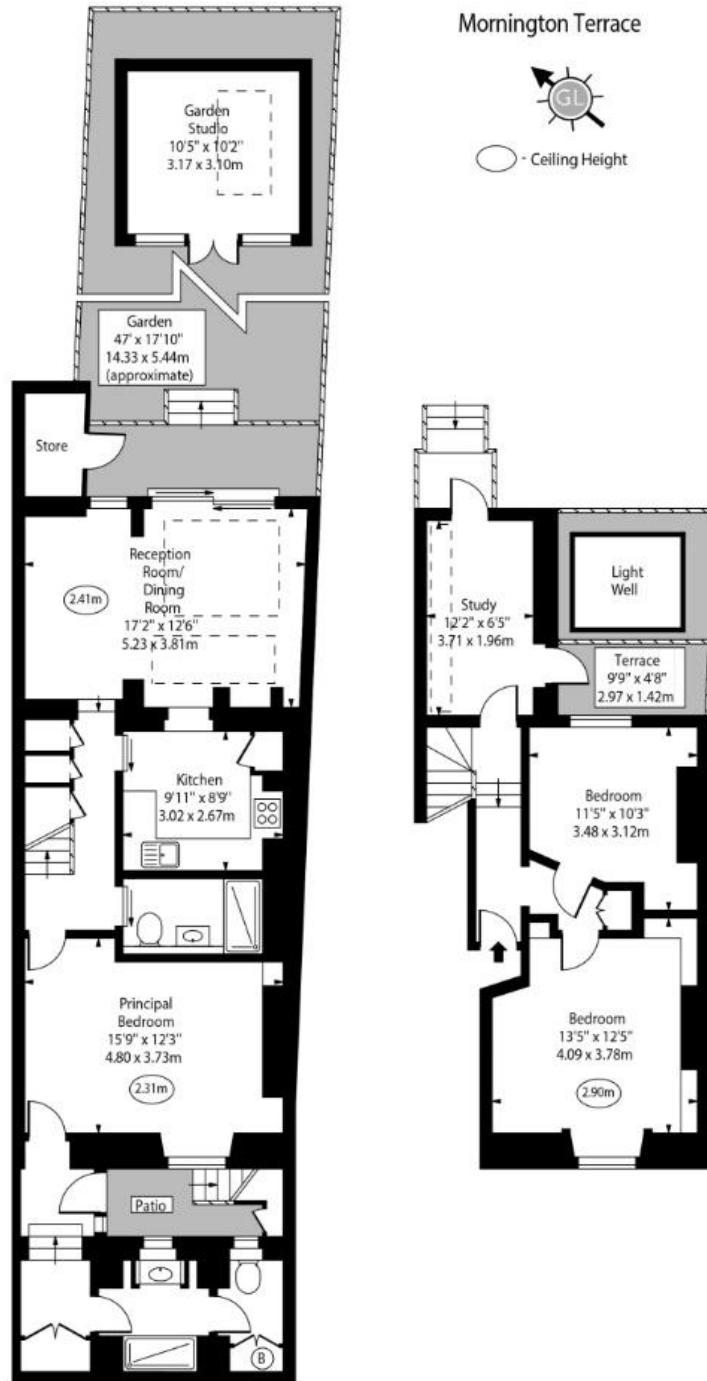
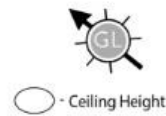
NW1 7PP

camden@chestertons.co.uk

020 7267 2053

chestertons.co.uk

Mornington Terrace



Lower Ground Floor
Gross Internal Area - 876 Sq Ft - 81.38 Sq M

Ground Floor
Gross Internal Area - 430 Sq Ft - 39.95 Sq M

Approx. Floor Area Including Restricted Heights
(Excluding Garden Studio)

1306 Sq Ft - 121.33 Sq M

Approx. Floor Area Including Restricted Heights
(Including Garden Studio)

1411 Sq Ft - 131.08 Sq M

For Illustration Purposes Only - Not To Scale
www.goldlens.co.uk
Ref. No. 024069E

Chesterton Global Ltd trading as Chestertons for themselves and for the vendor of this property whose agents they are, give notice that (i) these particulars do not constitute any part of an offer or contract, (ii) all statements contained within these particulars are made without responsibility on the part of Chestertons or the vendor, (iii) whilst made in good faith, none of the statements contained within these particulars are to be relied upon as a statement or representation of fact, (iv) any intending purchasers must satisfy themselves by inspection or otherwise as to the correctness of each of the statements contained within these particulars, (v) the vendor does not make or give either Chestertons or any person in their employment any authority to make or give representation or warranty whatsoever in relation to this property. Wide angle lenses may be used. ©Copyright Chestertons | Chesterton Global Ltd | Registered Office 40 Connaught Street, Hyde Park, London W2 2AB Registered Company Number 05334580.



This paper is
100% recyclable