



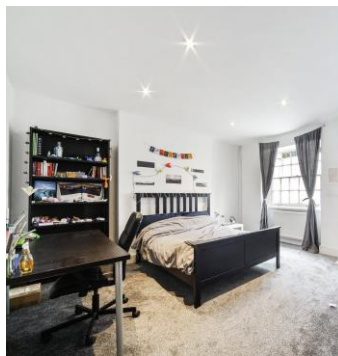
# Crowndale Road

London, NW1

Guide Price £750,000

A two double bedroom split level garden maisonette in impressive Georgian house. The accommodation comprises a large fully fitted modern eat in kitchen/diner, a spacious reception room, two double bedrooms, a fully fitted bathroom suite and guest w/c. Further benefits include period features throughout, ample storage and access to a garden.





# Crowndale Road

London, NW1

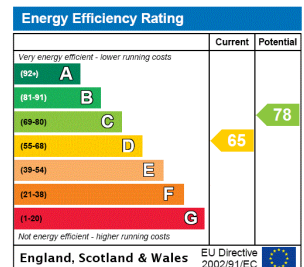
- Garden
- Two Double Bedrooms
- Eat in Kitchen
- Excellent Location
- Ample Storage Throughout
- Share Of Freehold





Crowndale Road is situated in the heart of Camden Town but quietly set away from the hustle and bustle. The area boasts a vast array of shops, cafes, restaurants and transport links. The ever popular Kings Cross is a short stroll down the canal path. Kings Cross offers an amazing array of shops, restaurants, and also boasts the Eurostar, British Museum, Francis Crick Institute, Google Headquarters, to name but a few..

**Tenure:** Share of Freehold with 999 years remaining on the lease.  
**Service Charge:** TBC  
**Ground Rent:** £0  
**Local Authority:** London Borough Of Camden  
**Council Tax Band:** F

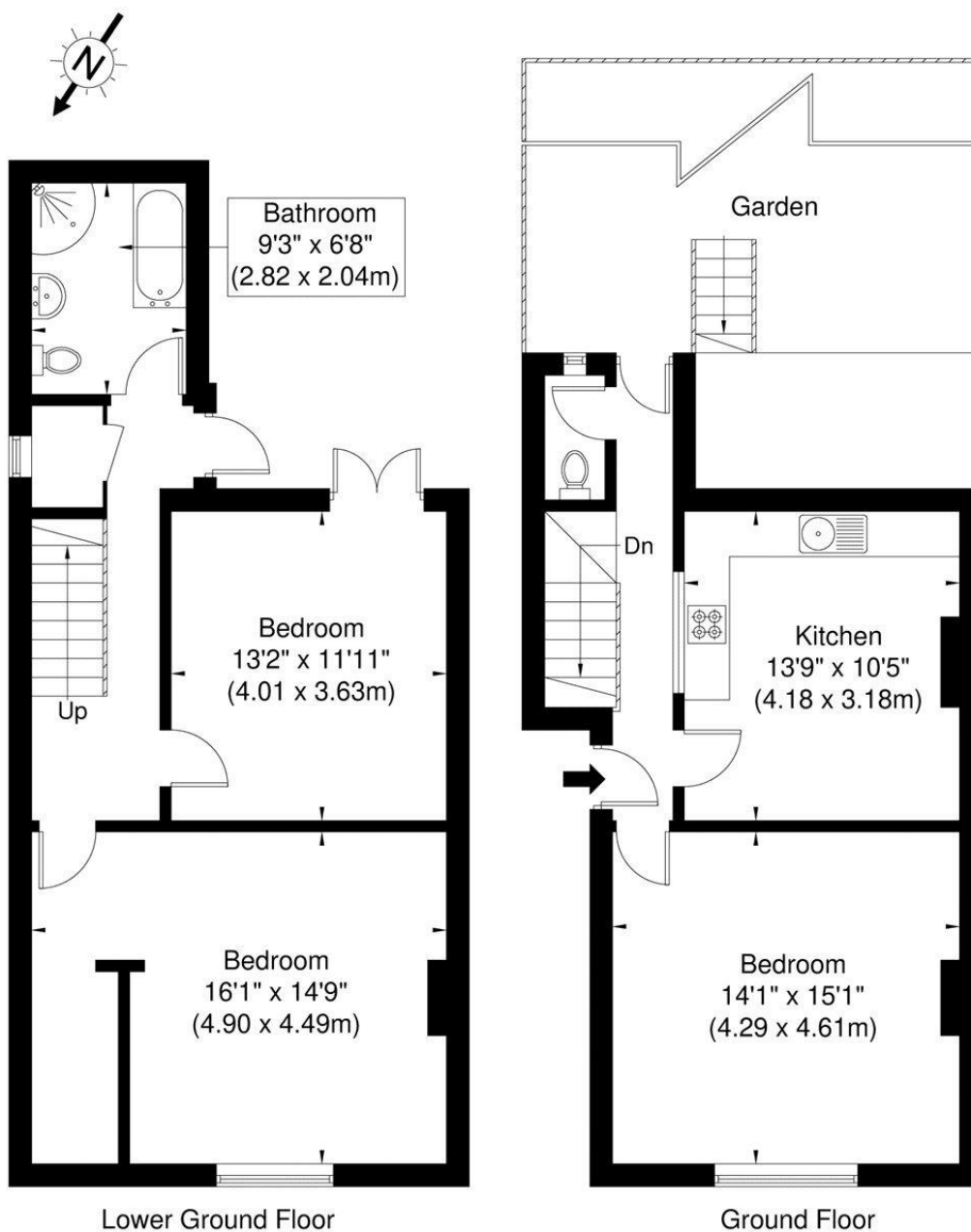


**Chestertons Camden & Kentish Town Sales**

99-101 Parkway  
 Camden  
 London  
 NW1 7PP  
 camden@chestertons.co.uk  
 020 7267 2053  
 chestertons.co.uk

# Crowndale Road NW1 1TN

Approx. Gross Internal Area = 101.7 sq m / 1091 sq ft



Ref

Copyright THE **BLÉU** PLAN

Disclaimer : Floor plan measurements are approximate and are for illustrative purposes only  
While we do not doubt the floor plan accuracy and completeness, you or your advisors should  
conduct a careful, independent investigation of the property in respect of monetary valuation

