



Lyme Street

London, NW1

Asking Price £1,395,000

A delightful semi-detached Grade II listed four bedroom house in the heart of Camden Town boasting many period features. Arranged over three floors this house offers flexible accommodation. The raised ground floor comprises a double aspect reception room with superb ceiling height and an abundance of natural light. On the same floor is the house bathroom, complete with Lefroy Brooks hardware and a cast iron bateau bath. The lower ground floor garden level offers a fantastic eat-in conservatory kitchen, two bedrooms (one currently configured as a reception room), shower room and separate side entrance. . On the first floor, you'll find a further two bedrooms with plentiful built-in storage. Further benefits include a patio garden, residents parking and charming period features. Being sold chain free.

CHESTERTONS



Lyme Street

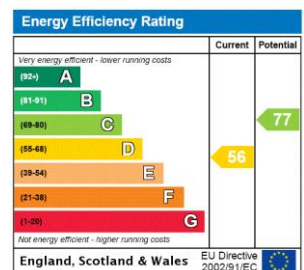
London, NW1

- Four bedrooms
- Two bathrooms
- Excellent location
- Chain free
- Grade II listed



Lyme Street is very centrally located, running between Camden Road and Georgiana Street, but is still a quiet location with very little through traffic. Ideally placed for access to Camden and the excellent amenities associated with this vibrant and lively part of London. Transport links are very good. Kings Cross is in close proximity and the house is in the catchment area for Camden School for Girls.

Tenure: Freehold
Service Charge: £0
Ground Rent: £0
Local Authority: London Borough Of Camden
Council Tax Band: G



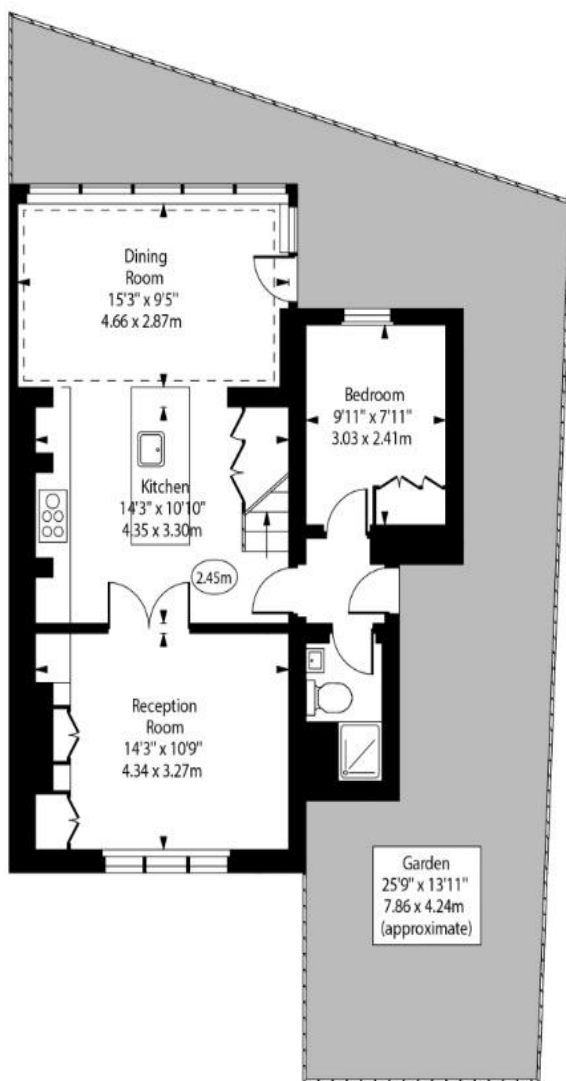
Chestertons Camden & Kentish Town Sales

99-101 Parkway
 Camden
 London
 NW1 7PP
 camden@chestertons.co.uk
 020 7267 2053
 chestertons.co.uk

Lyme Street

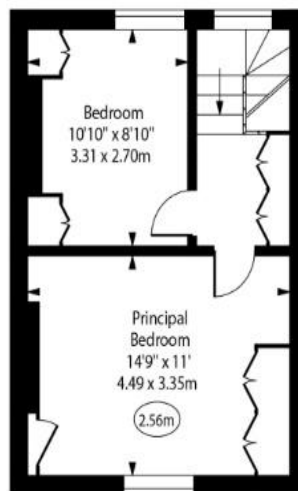


○ - Ceiling Height



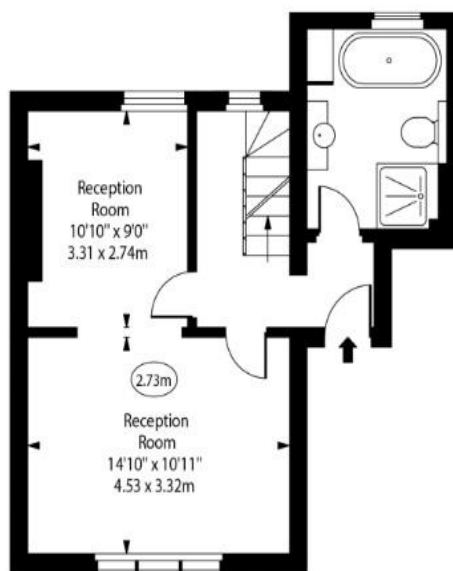
Lower Ground Floor

Gross Internal Area - 625 Sq Ft - 58.06 Sq M



First Floor

Gross Internal Area - 330 Sq Ft - 30.66 Sq M



Ground Floor

Gross Internal Area - 435 Sq Ft - 40.41 Sq M

Approx Gross Internal Area 1390 Sq Ft - 129.13 Sq M

For Illustration Purposes Only - Not To Scale
www.goldlens.co.uk
Ref. No. 024233MS

Chesterton Global Ltd trading as Chestertons for themselves and for the vendor of this property whose agents they are, give notice that (i) these particulars do not constitute any part of an offer or contract, (ii) all statements contained within these particulars are made without responsibility on the part of Chestertons or the vendor, (iii) whilst made in good faith, none of the statements contained within these particulars are to be relied upon as a statement or representation of fact, (iv) any intending purchasers must satisfy themselves by inspection or otherwise as to the correctness of each of the statements contained within these particulars, (v) the vendor does not make or give either Chestertons or any person in their employment any authority to make or give representation or warranty whatsoever in relation to this property. Wide angle lenses may be used. ©Copyright Chestertons | Chesterton Global Ltd | Registered Office 40 Connaught Street, Hyde Park, London W2 2AB Registered Company Number 05334580.



This paper is 100% recyclable