



# Mornington Terrace

London, NW1

Asking Price £1,450,000

A fantastic three bedroom garden maisonette a short walk from Regent's Park! This stylish apartment, measuring in excess of 1300 sq. ft., is offered in excellent condition and boasts three bedrooms, two bathrooms, reception leading out to the private garden - and a fully fitted kitchen. Furthermore, there is a study, garden studio and ample storage. Share of freehold.

**CHESTERTONS**



# Mornington Terrace

## London, NW1

- Three bedrooms
- Two bathrooms
- Separate study
- Garden studio
- Very well presented
- A short walk to Regents Park



Very well located at the northern end of Mornington Terrace. The excellent local amenities of Camden and Primrose Hill are on your doorstep. The green open spaces of both Regent's Park and Primrose Hill are on your doorstep.

---

**Tenure:** Share of Freehold with a lease of 89 years remaining.

**Service Charge:** TBC

**Ground Rent:** £0

**Local Authority:** London Borough Of Camden

**Council Tax Band:** D

---

*Chestertons Camden & Kentish Town Sales*

99-101 Parkway

Camden

London

NW1 7PP

camden@chestertons.co.uk

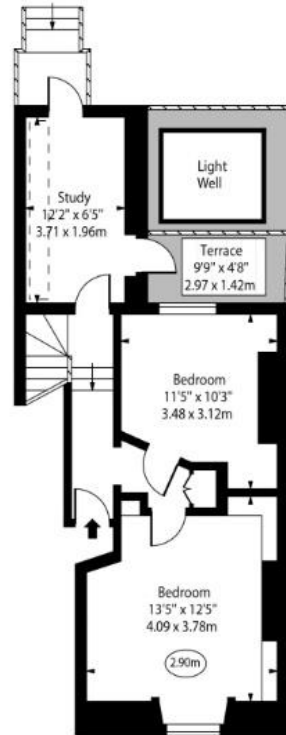
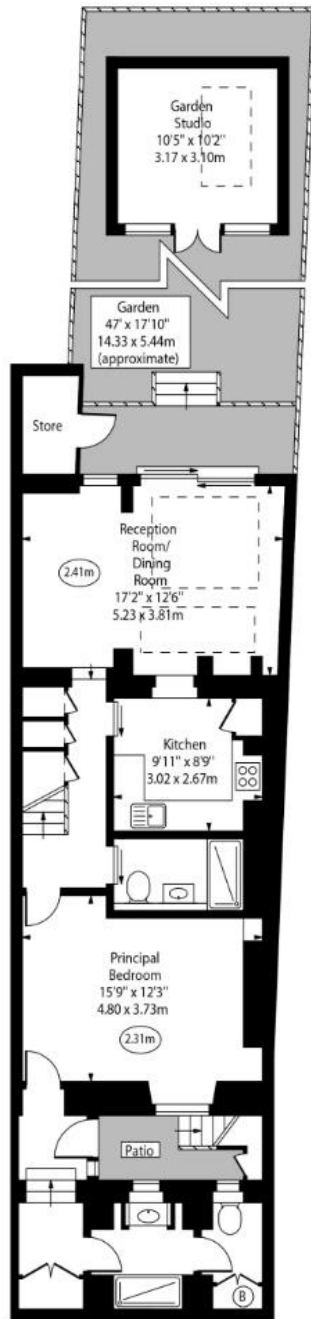
020 7267 2053

chestertons.co.uk

Mornington Terrace



○ - Ceiling Height



Lower Ground Floor

Gross Internal Area - 876 Sq Ft - 81.38 Sq M

Ground Floor

Gross Internal Area - 430 Sq Ft - 39.95 Sq M

Approx. Floor Area Including Restricted Heights  
(Excluding Garden Studio)

1306 Sq Ft - 121.33 Sq M

Approx. Floor Area Including Restricted Heights  
(Including Garden Studio)

1411 Sq Ft - 131.08 Sq M

For Illustration Purposes Only - Not To Scale  
www.goldlens.co.uk  
Ref. No. 024069E

