



Chetwynd Road

London, NW5

Guide Price £1,400,000

A spacious Victorian terraced house in need of some modernisation. The property, measuring 1700 sq ft with room to extend subject to planning, is currently laid out as two apartments but has great potential. Moments from Hampstead Heath. Being sold chain-free.



Chetwynd Road

London, NW5

- In need of modernisation
- Excellent location
- Currently laid out as two flats
- 1740 Square feet
- Close to Hampstead Heath



Chetwynd Road is an enviable location within Dartmouth Park giving easy access to Parliament Hill Fields, Hampstead Heath, Tufnell Park and Kentish Town are a stone's throw away providing excellent facilities and amenities whilst transport is excellent with Northern, mainline and Overground stations nearby as well as numerous bus routes. There are a number of highly regarded schools in easy reach both primary and

Tenure: Freehold
Service Charge: £0
Ground Rent: £0
Local Authority: London Borough Of Camden
Council Tax Band: E

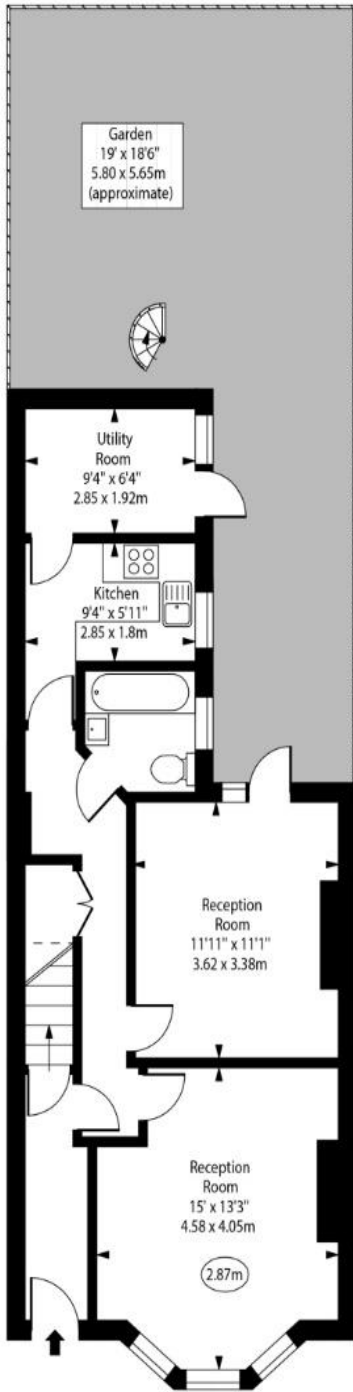
Chestertons Camden & Kentish Town Sales

99-101 Parkway
Camden
London
NW1 7PP
camden@chestertons.co.uk
020 7267 2053
chestertons.co.uk

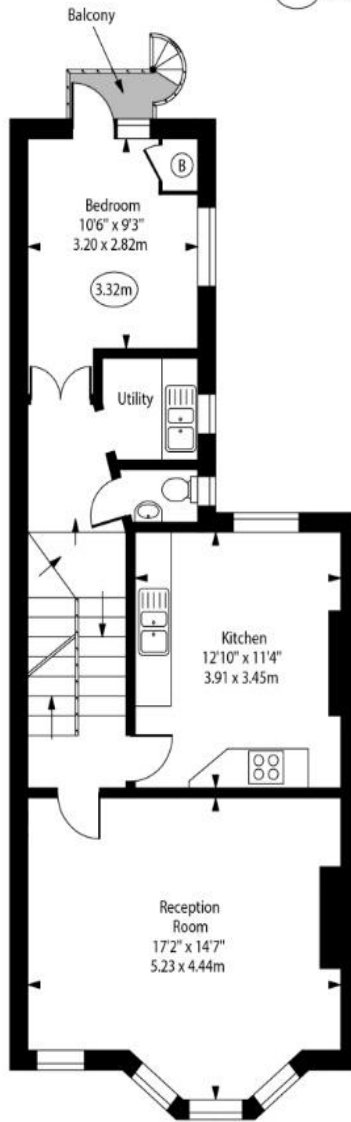
Chetwynd Road



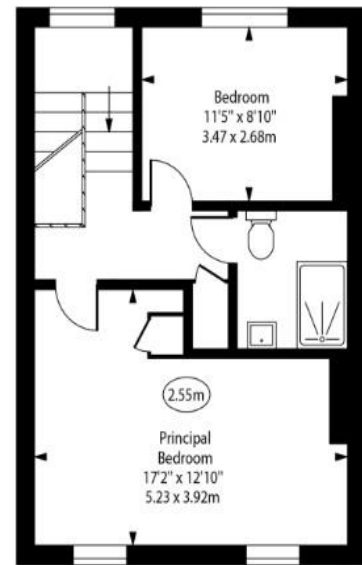
○ - Ceiling Height



Ground Floor
Gross Internal Area - 647 Sq Ft - 60.11 Sq M



First Floor
Gross Internal Area - 647 Sq Ft - 60.11 Sq M



Second Floor
Gross Internal Area - 446 Sq Ft - 41.43 Sq M

Approx Gross Internal Area 1740 Sq Ft - 161.65 Sq M

For Illustration Purposes Only - Not To Scale
www.goldlens.co.uk
Ref. No. 023471J

