

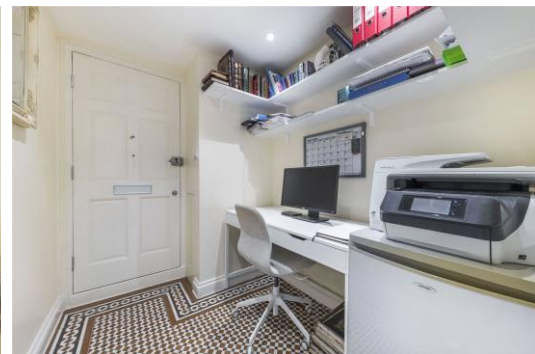


Malden Road

London, NW5

£410,000 Guide Price

A very stylish and well-presented one bedroom apartment with a large private garden, ideally located for Chalk Farm, Camden & Kentish Town with access to a variety of transport links and Hampstead Heath. Comprising; a light and bright reception room with direct access out onto a large private garden, a modern fully fitted kitchen, a good sized bedroom and a modern bathroom. Being sold chain-free.



Malden Road

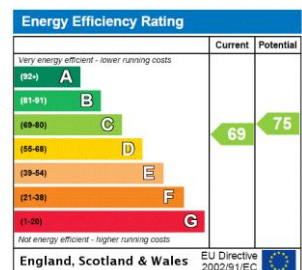
London, NW5

- Private Garden
- Very well presented
- Separate Office Space
- Lots Of Built In Storage
- Chain-free



The property is very well located to take advantage of the surrounding amenities and neighbourhoods of Belsize Park, Kentish Town, Camden and Hampstead.

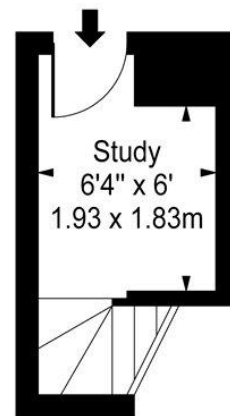
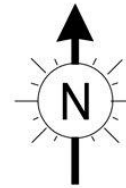
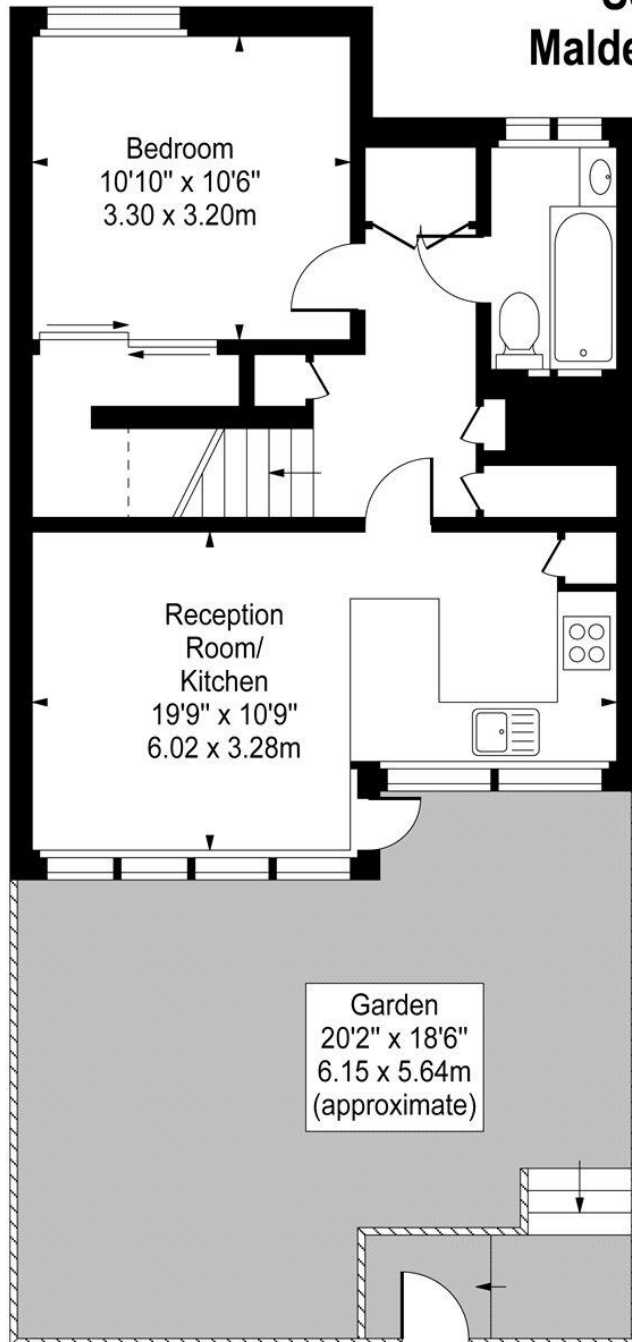
Tenure: Leasehold
Service Charge: TBC
Ground Rent: TBC



Chestertons Camden & Primrose Hill Sales

99-101 Parkway
Camden
London
NW1 7PP
sales.camden@chestertons.com
020 7267 2053
chestertons.com

**Southfleet,
Malden Road, NW5**



Lower Ground Floor

Raised Ground Floor

Approx Gross Internal Area 547 Sq Ft - 50.82 Sq M

For Illustration Purposes Only - Not To Scale

www.goldlens.co.uk

Ref. No. 009256J

