



# Arlington Road

London, NW1

£664,995 Guide Price

A wonderfully bright and spacious two-bedroom, two-bathroom maisonette over two and half floors, converted in recent years from a shop-fronted period terrace. The master bedroom has an en-suite bathroom and large walk-in wardrobe. In excellent condition with hardwood flooring, South-west facing balconies and excellent storage. Centrally located within moments of Camden Town's multiple shopping, transport (northern line) and entertainment facilities, with Camden Lock at the end of the road. Gas centrally heated. Double glazed. Chain free.





# Arlington Road

London, NW1

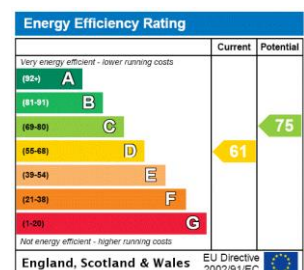
- Very well presented
- Two bedrooms/two bathrooms
- Excellent location
- Southerly facing balcony
- Chain-free





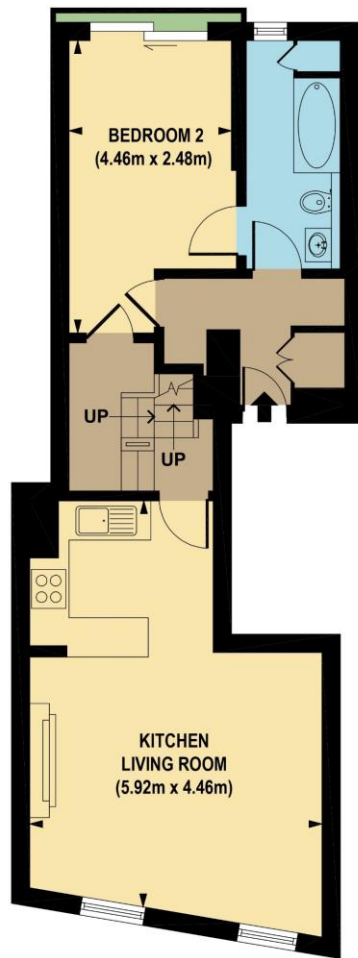
Perfectly located within moments of Camden Town's multiple shopping, transport (northern line) and entertainment facilities, with Camden Lock at the end of the road.

**Tenure:** Leasehold

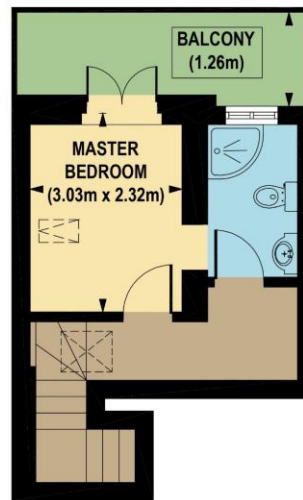


### *Chestertons Camden & Primrose Hill Sales*

99-101 Parkway  
Camden  
London  
NW1 7PP  
sales.camden@chestertons.com  
020 7267 2053  
chestertons.com



SECOND FLOOR  
GROSS INTERNAL  
FLOOR AREA 537 SQ FT



THIRD FLOOR  
GROSS INTERNAL  
FLOOR AREA 193 SQ FT

**APPROX. GROSS INTERNAL FLOOR AREA 730 sq. ft / 67.85 sq. m**

Floorplan is for illustrative purposes only and is not to scale.  
Every attempt has been made to ensure the accuracy of the floorplan shown, however all measurements, fixtures, fittings and data shown are an approximate interpretation for illustrative purposes only.  
Liability for errors, omissions or mis-statement through negligence or otherwise is hereby excluded.

**CP CREATIVE**  
PROPERTY MARKETING

