



Monmouth Street

London, WC2H

Asking Price £1,100,000

Charming top floor duplex apartment tucked away on Monmouth Street, within a period residential conversion featuring balcony and tons of character. Monmouth Street is one of the Seven Dials, a collection of picturesque cobbled streets.



Monmouth Street

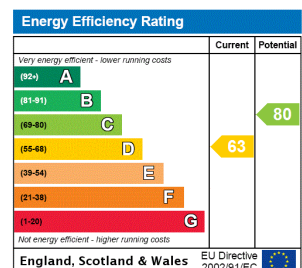
London, WC2H

- The property is excellently placed for Leicester Square, Covent Garden, Holborn stations and the Crossrail.
- Surrounded by boutique shops, eateries, theatres and galleries this beautiful flat is a rarity in Covent Garden.



Charming top floor duplex apartment tucked away on Monmouth Street, within a period residential conversion featuring balcony and tons of character. Monmouth Street is situated in the hugely popular seven dials area of Covent Garden, opposite the famous Covent Garden Hotel. The neighbourhood is host to an array of theatres, restaurants, boutiques, cafes and shops and transport links are excellent with Covent Garden tube station nearby.

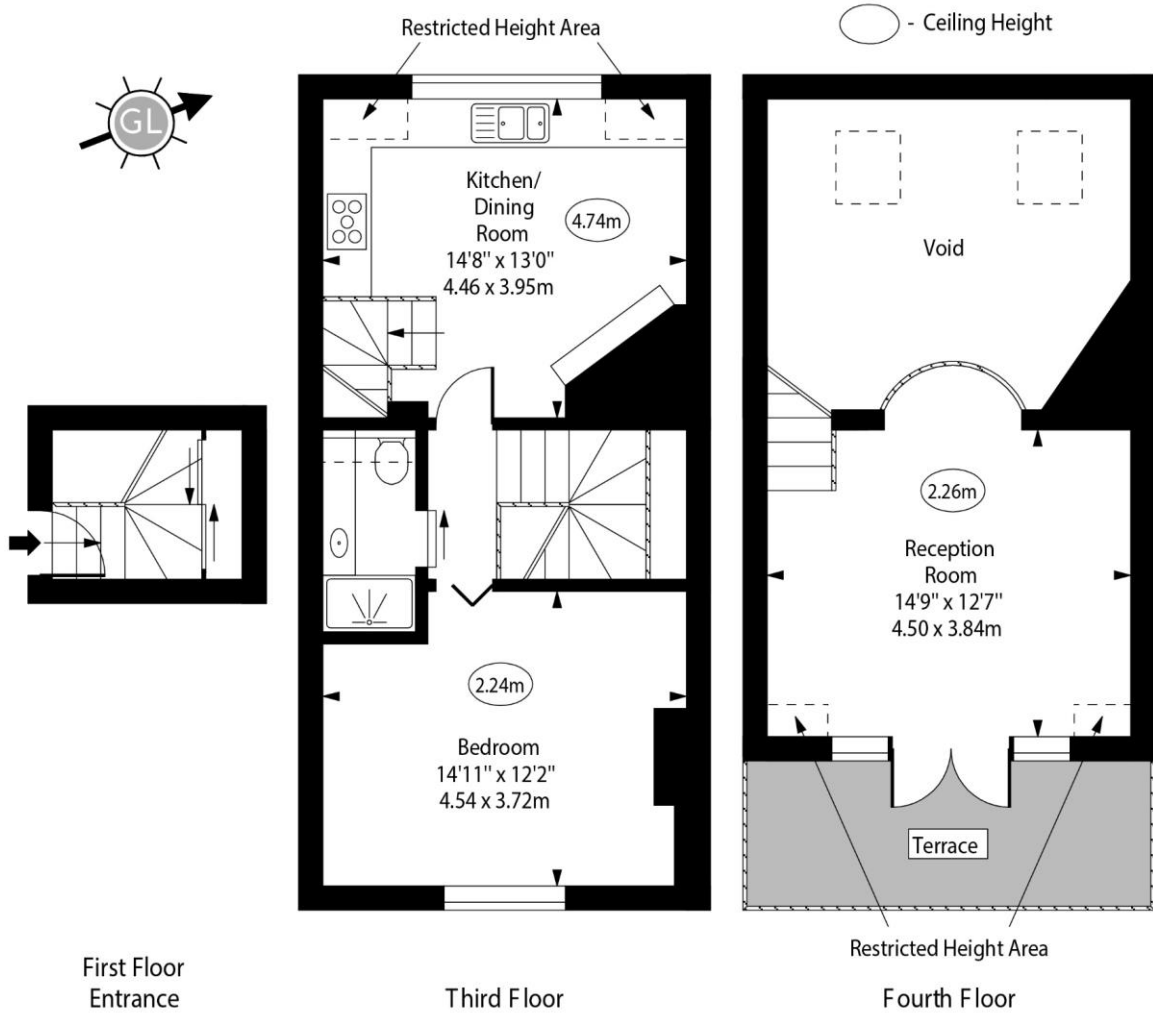
Tenure: Leasehold 143 years 11 months
Service Charge: TBC
Ground Rent: TBC
Local Authority: London Borough Of Camden
Council Tax Band: G



Chestertons Covent Garden Sales

196 Shaftesbury Avenue
 London
 WC2H 8JF
 coventgarden@chestertons.co.uk
 020 3040 8300
 chestertons.co.uk

Monmouth Street



Approx Gross Internal Area

700 Sq Ft - 65.03 Sq M

Approx. Floor Area Including Restricted Heights

716 Sq Ft - 66.52 Sq M

(Excluding Void)

For Illustration Purposes Only - Not To Scale

www.goldlens.co.uk

Ref. No. 022667J

