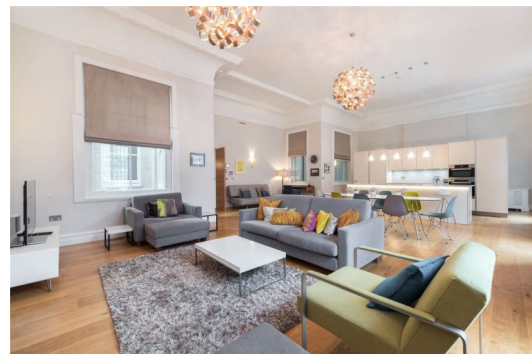




Kingsway

London, WC2B

£2,500,000 Asking Price



Kingsway

London, WC2B

- Fabulous Apartment Offering Great Living Space
- Impressive Neo-Classical Stone Façade
- Located A Short Walk From The Energetic Heart Of Covent Garden
- Communal Roof Terrace



Spectacular high ceilinged lateral apartment within a smart and grand converted period building in the heart of Central London, on Kingsway, WC2. The development exquisitely blends a perfect balance of old and new, behind its timeless, period façade. Also benefits from access to communal roof terrace.

Tenure: Leasehold 118 years (expiring 01/07/2138)

Service Charge: £10,800 per annum (2019 charge, as advised by seller)

Ground Rent: £1000 per annum, as advised by seller

Energy Efficiency Rating		
	Current	Potential
Very energy efficient - lower running costs		
A (92+)		
B (81-91)		
C (69-80)		
D (55-68)		
E (39-54)		
F (21-38)		
G (1-20)		
Not energy efficient - higher running costs		
England, Scotland & Wales	69	82
EU Directive 2002/91/EC		

Chestertons Covent Garden Sales

196 Shaftesbury Avenue

London

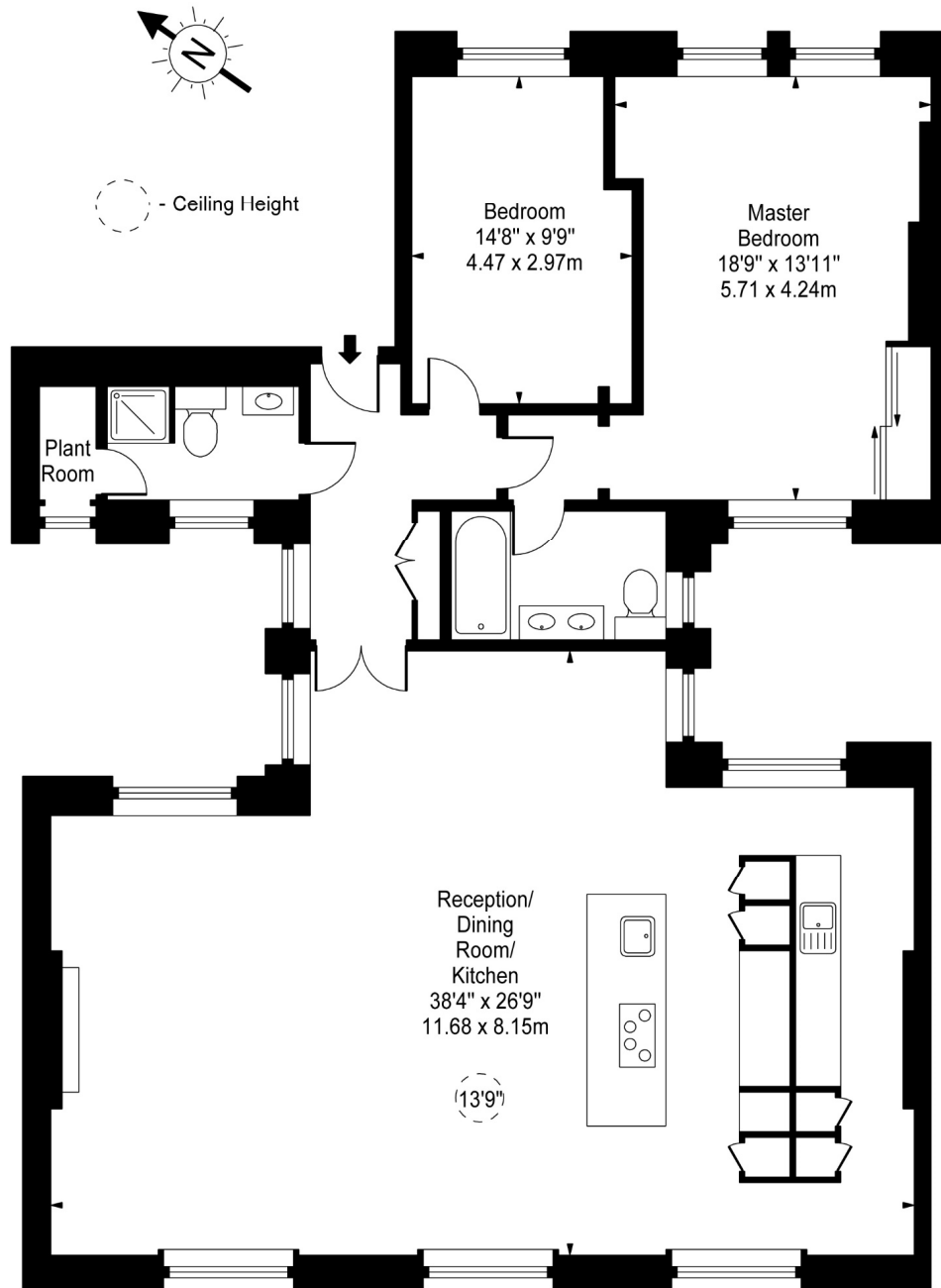
WC2H 8JF

sales.coventgarden.enquiries@chestertons.com

020 3040 8300

chestertons.com

Kingsway



Second Floor

Approx Gross Internal Area **1500 Sq Ft - 139.35 Sq M**

For Illustration Purposes Only - Not To Scale

www.goldlens.co.uk

Ref. No. 011186K