



Central St. Giles Piazza

Covent Garden, WC2H

£2,500,000 Asking Price

A rare opportunity to live in this landmark development, well located for all the WEST END has to offer. Found on the 8th floor with 24 hour portorage & PRIVATE PARKING, the apartment offers 3 BEDROOMS, superb open plan living space & panoramic views



Central St. Giles Piazza

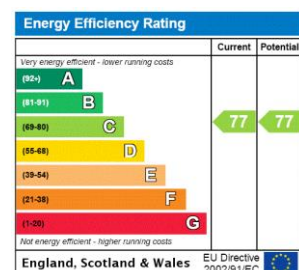
Covent Garden, WC2H

- 3 Bedrooms
- 24 Hour Porterage
- Private Parking
- Superb Open Plan Living Space & Panoramic Views



A rare opportunity to live in this landmark development, well located for all the WEST END has to offer. Found on the 8th floor with 24 hour porterage & PRIVATE PARKING, the apartment offers 3 BEDROOMS, superb open plan living space & panoramic views

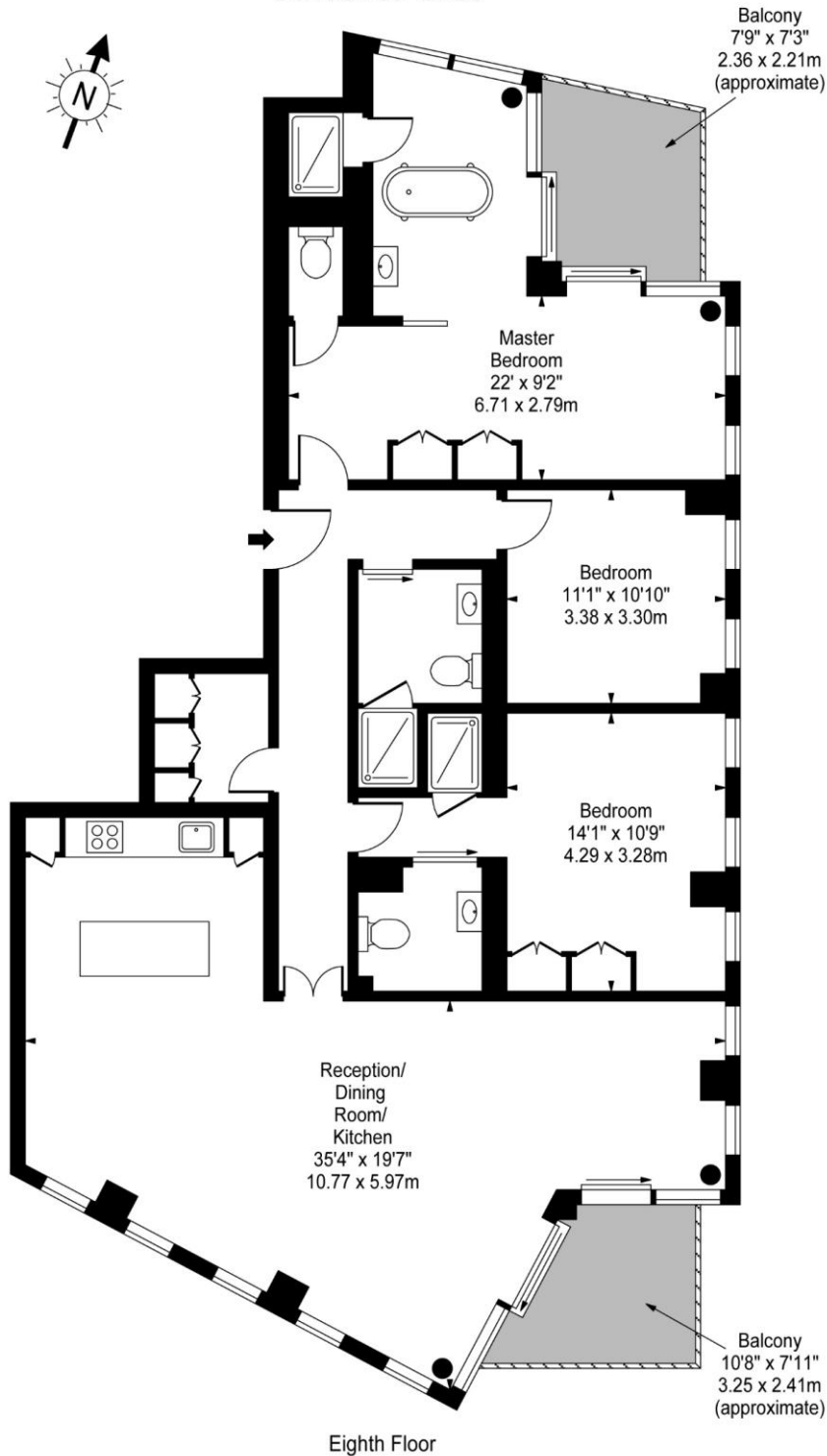
Tenure: Leasehold – 138 year approx.
Service Charge: £4,767.11 quarterly (as advised by seller)
Ground Rent: £650pa



Chestertons Covent Garden Sales

196 Shaftesbury Avenue
 London
 WC2H 8JF
sales.coventgarden.enquiries@chestertons.com
 020 3040 8300
chestertons.com

Central St. Giles



Approx Gross Internal Area **1540 Sq Ft - 143.07 Sq M**

For Illustration Purposes Only - Not To Scale
www.goldlens.co.uk

