



Monmouth Street

Seven Dials, WC2H

Offers in excess of £850,000

A fabulous one bedroom flat in Monmouth Street, in the heart of Seven Dials village. This apartment is beautifully presented throughout boasting an uncompromised quality of specification including Devol kitchen and cabinetry throughout.

CHESTERTONS



Monmouth Street

Seven Dials, WC2H

- First Floor Apartment Within Period Conversion
- Impressive Ceiling Heights
- Covent Garden & Leicester Square Are Within Close Walking Distance
- Next Door To The Covent Garden Hotel



A fabulous one bedroom flat in Monmouth Street, in the heart of Seven Dials village. This apartment is beautifully presented throughout boasting an uncompromised quality of specification including Devol kitchen and cabinetry throughout and underfloor heating. Monmouth Street in Covent Garden is a vibrant and lively area to call home. With its central location, residents can enjoy easy access to some of London's best shopping, dining, and entertainment options. The street itself is lined with charming cafes, boutique shops, and independent retailers, making it a unique and exciting place to explore. Having both The Covent Garden Hotel and Neals Yard on your doorstep gives you a great range of options. Living on Monmouth Street also means being part of a tight-knit

Tenure: Leasehold 84 years 5 months
Service Charge: £1850 paid to CBRE
Ground Rent: £125 paid to CBRE/Shaftsebury
Local Authority: Camden
Council Tax Band: E

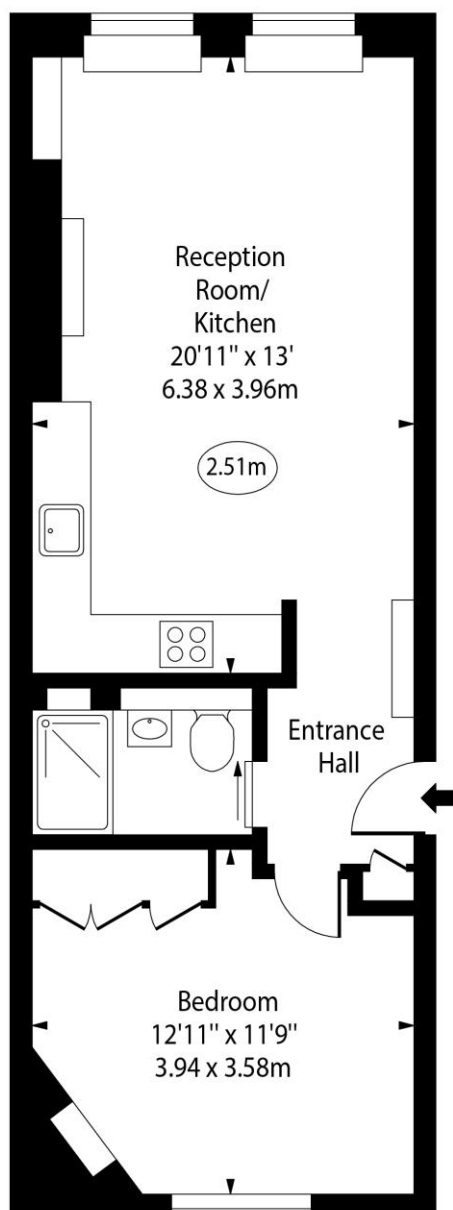
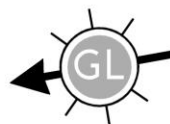
Energy Efficiency Rating		
	Current	Potential
Very energy efficient - lower running costs		
A (92-100)		
B (81-91)		
C (69-80)	69	75
D (55-68)		
E (39-54)		
F (21-38)		
Not energy efficient - higher running costs		
G (1-20)		
England, Scotland & Wales		EU Directive 2002/91/EC

Chestertons Covent Garden Sales

196 Shaftesbury Avenue
 London
 WC2H 8JF
 coventgarden@chestertons.co.uk
 020 3040 8300
 chestertons.co.uk

Monmouth Street, Seven Dials

○ - Ceiling Height



First Floor

Approx Gross Internal Area 506 Sq Ft - 47.01 Sq M

For Illustration Purposes Only - Not To Scale

www.goldlens.co.uk

Ref. No. 026033E

