

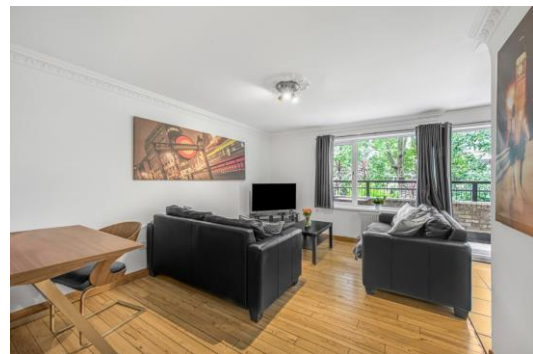


Dudley Court

36 Endell Street, WC2H

Asking Price £1,350,000

CHESTERTONS



Dudley Court

36 Endell Street, WC2H



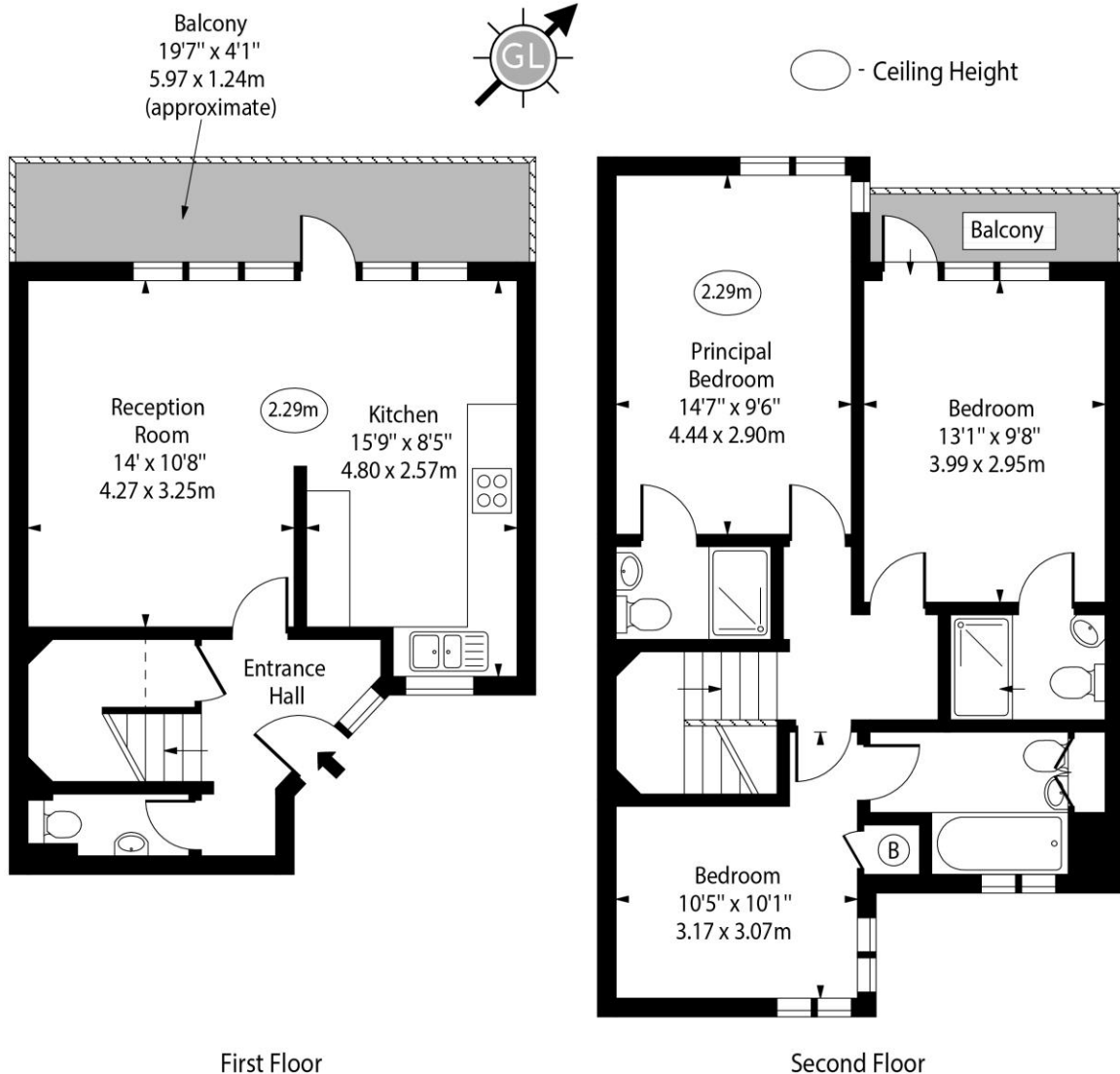
Tenure: Leasehold
Service Charge: £3961
Ground Rent: £0
Local Authority: Westminster
Council Tax Band: E

Score	Energy rating	Current	Potential
92+	A		
81-91	B		
69-80	C	70 C	72 C
55-68	D		
39-54	E		
21-38	F		
1-20	G		

Chestertons Covent Garden Sales

196 Shaftesbury Avenue
London
WC2H 8JF
coventgarden@chestertons.co.uk
020 3040 8300
chestertons.co.uk

Dudley Court, Endell Street



Approx Gross Internal Area 968 Sq Ft - 89.93 Sq M

Every attempt has been made to ensure the accuracy of the floor plan shown. However, all measurements, fixtures, fittings, and data shown are approximate interpretations and for illustrative purposes only.

Measured according to the RICS IPMS 2. Not To Scale.

www.goldlens.co.uk

Ref. No. 028493E