



Centre Point

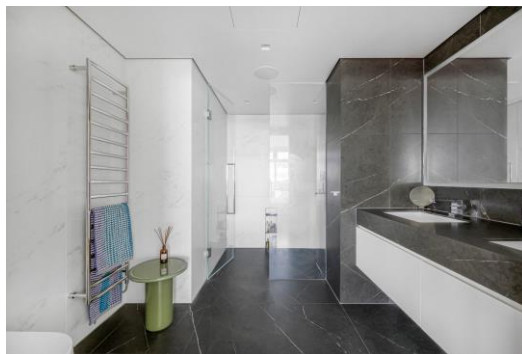
101 -103 New Oxford Street, WC1A

Asking Price £5,950,000

This spectacular 2,100 sq ft residence commands breath-taking panoramic views across London's glittering West

End from its coveted 18th-floor perch. This Grade II listed brutalist icon, standing 117 metres tall, has been

CHESTERTONS



Centre Point

101 -103 New Oxford Street, WC1A



3 Bedrooms | Master En Suite | 2 Additional En Suites | Guest Powder Room | Grand Reception/Dining Room | Designer Kitchen | Flexible Study/4th Bedroom | Private Lift Access | 24-Hour Concierge | World-Class Amenities | EPC Rating B

This spectacular 2,100 sq ft residence commands breathtaking panoramic views across London's glittering West End from its coveted 18th-floor perch. This Grade II listed brutalist icon, standing 117 metres tall, has been meticulously transformed into one of London's most prestigious addresses.

ARCHITECTURAL MASTERPIECE REIMAGINED

Tenure: Leasehold 996 years 6 months

Service Charge: £45000

Ground Rent: £1000

Local Authority: Camden

Council Tax Band: G

| Score | Energy rating | Current | Potential |
|-------|---------------|---------|-----------|
| 92+ | A | | |
| 81-91 | B | 86 B | 86 B |
| 69-80 | C | | |
| 55-68 | D | | |
| 39-54 | E | | |
| 21-38 | F | | |
| 1-20 | G | | |

Chestertons Covent Garden Sales

196 Shaftesbury Avenue

London

WC2H 8JF

coventgarden@chestertons.co.uk

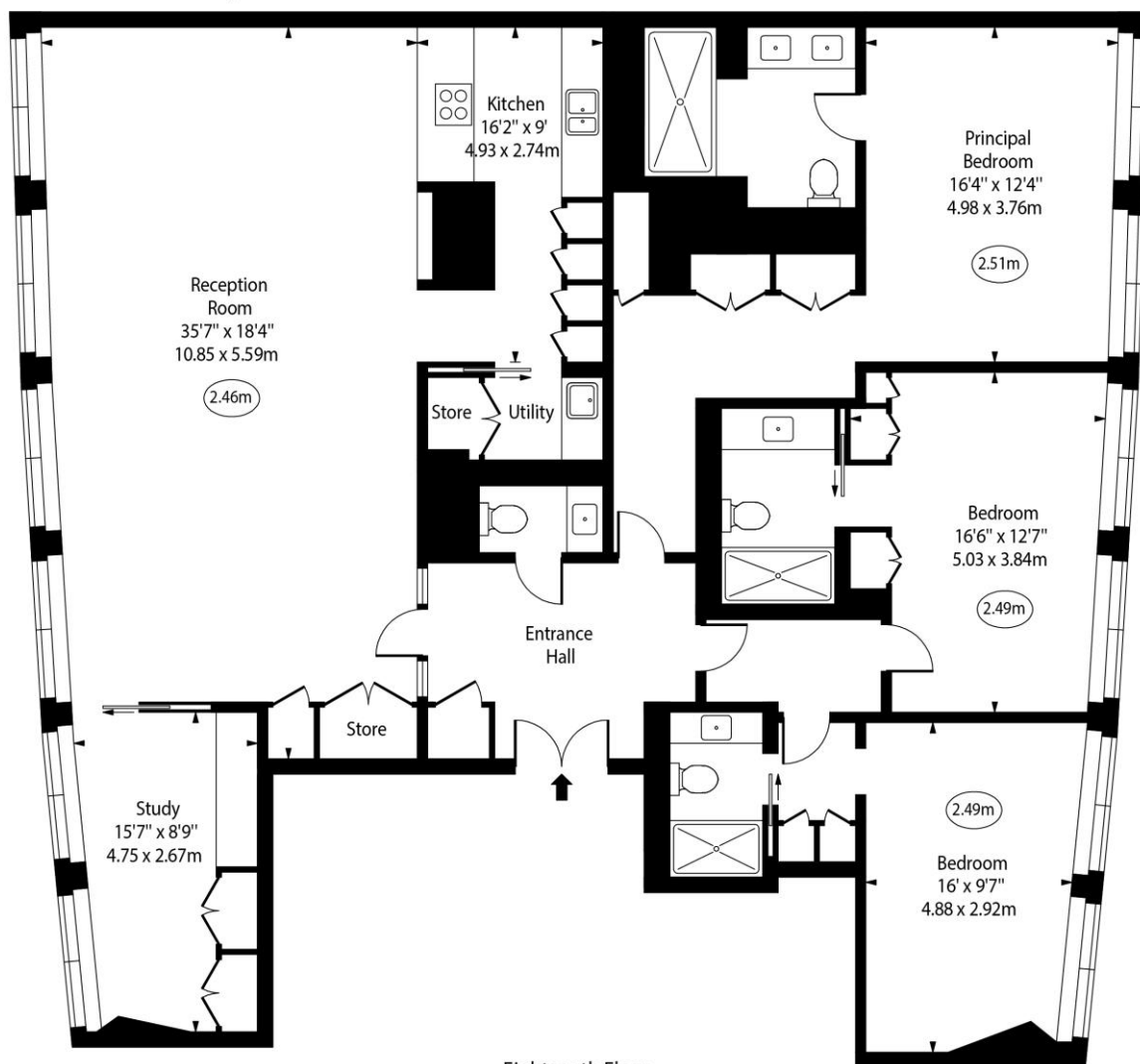
020 3040 8300

chestertons.co.uk

Centre Point Residences,
New Oxford Street



○ - Ceiling Height



Eighteenth Floor

Approx Gross Internal Area 2100 Sq Ft - 195.09 Sq M

Every attempt has been made to ensure the accuracy of the floor plan shown. However, all measurements, fixtures, fittings, and data shown are approximate interpretations and for illustrative purposes only.

Measured according to the RICS IPMS 2. Not To Scale.

www.goldlens.co.uk

Ref. No. 028153M

