



Gordon Mansions

Torrington Place, WC1E

Asking Price £1,800,000

Elegant 3-bed + study lateral residence in Bloomsbury. Character-filled spaces bathed in light. Floor-to-ceiling bookshelves, vibrant interiors. Cultural quarter living at its finest.



Gordon Mansions

Torrington Place, WC1E

- Lateral Apartment in Prestigious Bloomsbury Mansion Block.
- Upper Floor With Lift Access
- British Museum, UCL, and west End Around The Corner
- Transport Links



An exceptional opportunity to acquire a distinctive three-bedroom (+ study) apartment (1,375 sq ft) on the fourth floor of this prestigious Bloomsbury mansion block, accessed via lift. This rare lateral residence showcases a perfect fusion of period elegance and artistic flair throughout its generously proportioned rooms.

The property boasts a magnificent reception room with colourful interiors and abundant natural light, complemented by a separate study ideal for remote working. The timber panelled eclectic kitchen/dining room features pattern-rich tiles and a professional-grade range cooker, while the principal bedroom offers ample space and elegant proportions.

Gordon Mansions occupies a coveted position in Bloomsbury's literary quarter, moments from the British Museum, UCL, and the cultural attractions of the West End. The area's rich intellectual heritage, coupled with excellent transport connections and proximity to world-class dining and shopping, makes this a truly exceptional London residence for the discerning buyer.

Tenure: Leasehold 172 years 2 months

Service Charge: £TBC

Ground Rent: £TBC

Local Authority: Camden

Council Tax Band: G

Chestertons Covent Garden Sales

196 Shaftesbury Avenue

London

WC2H 8JF

coventgarden@chestertons.co.uk

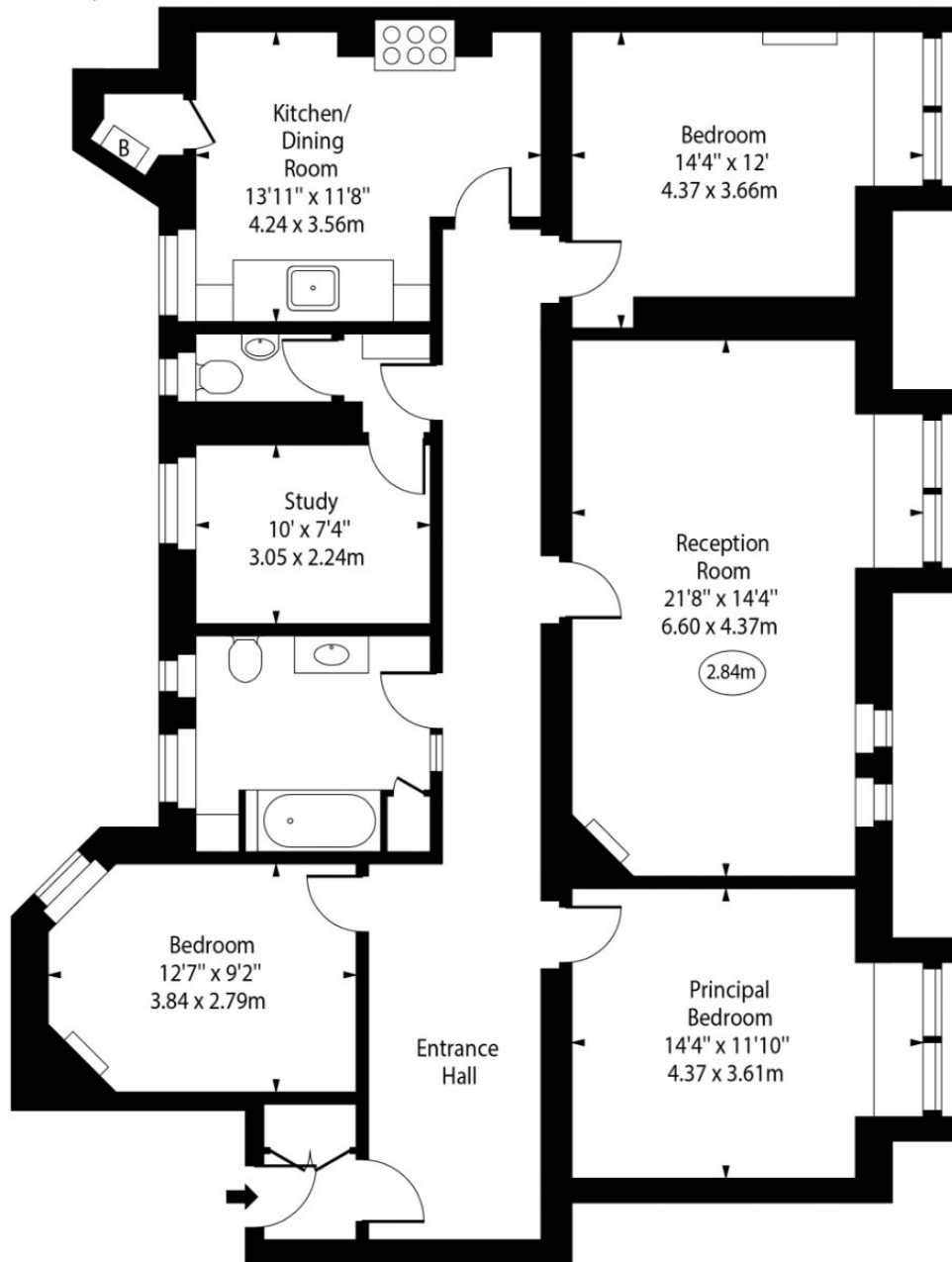
020 3040 8300

chestertons.co.uk

Gordon Mansions



○ - Ceiling Height



Fourth Floor

Approx Gross Internal Area 1375 Sq Ft - 127.74 Sq M

For Illustration Purposes Only - Not To Scale

www.goldlens.co.uk

Ref. No. 027601K

