



Pearson Square

London, W1T

Asking Price £2,995,000

Exceptional three-bedroom apartment in Fitzroy Place. Featuring dramatic 3.75m ceilings, three bedrooms, and world-class residents' amenities including 24/7 concierge, gym, and private cinema. A rare opportunity in London's most vibrant area.



Pearson Square

London, W1T

- 24-hour concierge service
- An elegant Club Room with a statement fireplace
- Private 20-seat cinema
- State-of-the-art fitness centre with personal training studio
- Dedicated massage and wellness room
- Executive business lounge and conference facilities



Presenting an exceptional lateral apartment with spectacular ceiling heights in prestigious Fitzroy Place - the first development in over a century to introduce a new square to London's W1 postcode. This architectural masterpiece combines heritage with contemporary luxury in the heart of Fitzrovia.

This immaculately conceived three-bedroom residence features generously proportioned bedrooms with bespoke fitted wardrobes, and three luxuriously appointed bathrooms. The reception room, with its soaring ceilings, provides an impressive entertaining space, while the kitchen is finished to exceptional standards. The dramatic ceiling height creates an atmosphere of unparalleled sophistication, flooding the living spaces with natural light and offering perfect opportunities for showcasing significant artwork.

Tenure: Leasehold 979 years 11 months

Service Charge: £15,000 (as advised by vendor)

Ground Rent: £1000 (as advised by vendor)

Local Authority: City of Westminster

Council Tax Band: G

Chestertons Covent Garden Sales

196 Shaftesbury Avenue

London

WC2H 8JF

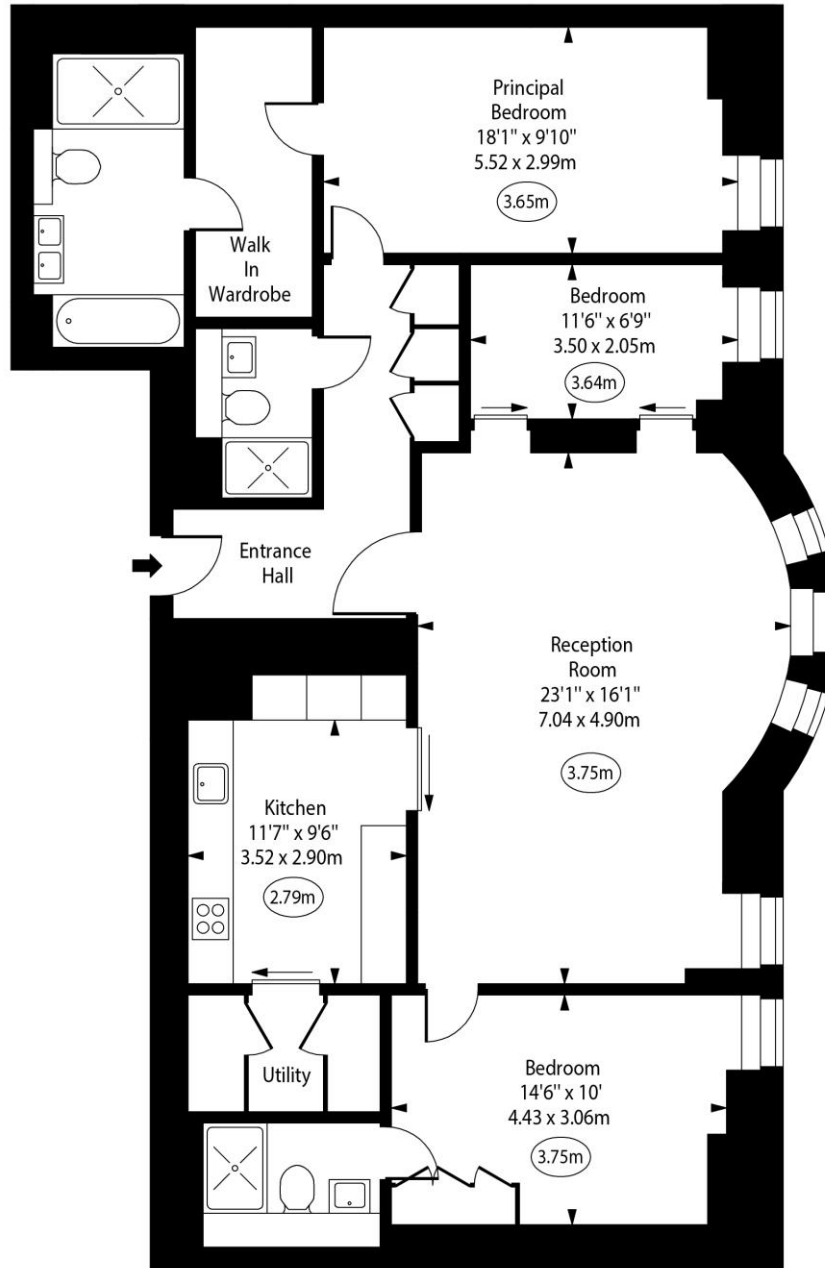
coventgarden@chestertons.co.uk

020 3040 8300

chestertons.co.uk

Pearson Square

○ - Ceiling Height



First Floor

Approx Gross Internal Area 1346 Sq Ft - 125.04 Sq M

For Illustration Purposes Only - Not To Scale
www.goldlens.co.uk
 Ref. No. 026503F

