



Judd Street

London, WC1H

Asking Price £585,000

Elegant one-bedroom apartment in Bloomsbury with stylish interiors, bespoke storage, and private patios. Perfectly positioned between King's Cross and Russell Square with UCL at your doorstep.



Judd Street

London, WC1H

- Period Property
- Low Service Charge
- Transport Link Nearby
- University College of London around the corner



Stylish One-Bedroom Apartment in Prime Bloomsbury Location.

Nestled in the heart of Bloomsbury on historic Judd Street, this immaculately presented lower ground floor apartment offers contemporary living in one of London's most culturally rich neighborhoods. At 488 square feet (45.3 sq m), this beautifully designed one-bedroom home seamlessly blends period charm with modern sophistication.

Step into a bright reception room featuring elegant herringbone wood flooring, custom-built storage solutions, and generous ceiling heights. The sleek kitchen boasts high-specification appliances, granite worktops, and ample storage space. The well-proportioned bedroom includes fitted wardrobes and receives excellent natural light, while thoughtful design touches can be found throughout this exceptional property.

With two charming patios providing private outdoor space—a rarity in central London—this apartment offers the perfect urban sanctuary. Ideally positioned between King's Cross St. Pancras and Russell Square stations, with the British Museum, Brunswick Centre, and UCL just moments away. This home represents an exceptional opportunity to acquire a slice of quintessential London living with 112 years remaining on the lease and impressively low service charges.

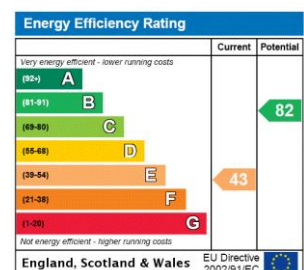
Tenure: Leasehold 112 years 3 months

Service Charge: £1370 (as advised by vendor)

Ground Rent: £250 (as advised by vendor)

Local Authority: Camden

Council Tax Band:



Chestertons Covent Garden Sales

196 Shaftesbury Avenue

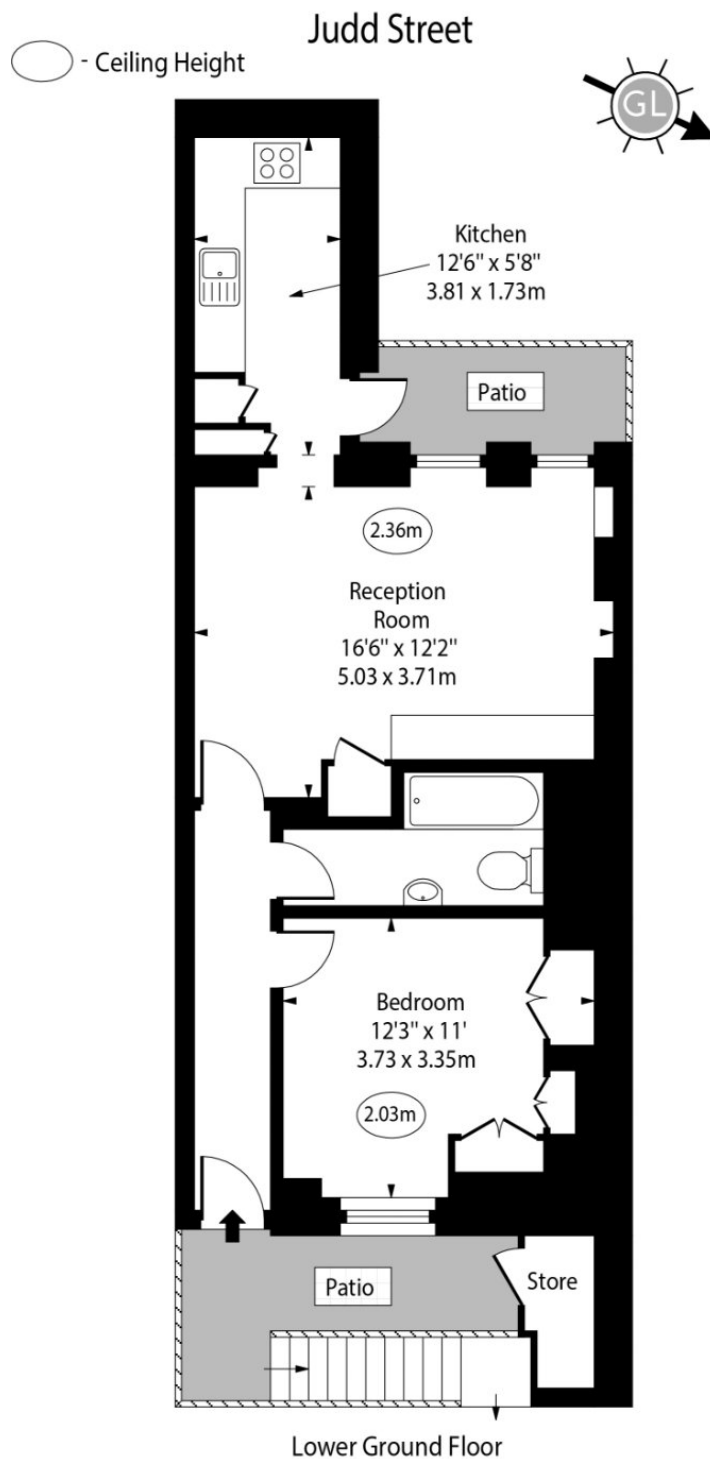
London

WC2H 8JF

coventgarden@chestertons.co.uk

020 3040 8300

chestertons.co.uk



Approx Gross Internal Area 520 Sq Ft - 48.31 Sq M

For Illustration Purposes Only - Not To Scale
www.goldlens.co.uk
 Ref. No. 027489K