



# Drury Lane

London, WC2B

Asking Price £1,850,000

Nestled in the vibrant heart of London's theatrical district, this rare three-bedroom maisonette offers an extraordinary blend of sophisticated urban living and tranquil private spaces.





# Drury Lane

## London, WC2B

- Patio Garden
- Conservatory
- Two Spacious Double Bedrooms
- Heart of Covent Garden

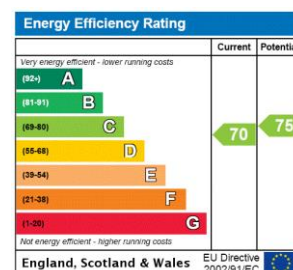




This exceptional property showcases a stunning conservatory flooded with natural light that opens onto a beautifully landscaped private patio garden—a truly rare find in Central London. The interior boasts a serene reception room perfect for entertaining or relaxing away from the city's bustle.

The contemporary kitchen combines functionality with elegant design, while three generously-sized double bedrooms provide ample space with extensive built-in storage solutions. The property features a luxurious primary bathroom with both bath and shower facilities, a second bathroom, and a convenient guest cloakroom—ensuring comfort for residents and visitors alike.

**Tenure:** Leasehold 178 years 5 months  
**Service Charge:** £1328.92 as per vendor  
**Ground Rent:** £0 as per vendor  
**Local Authority:** Camden  
**Council Tax Band:** G

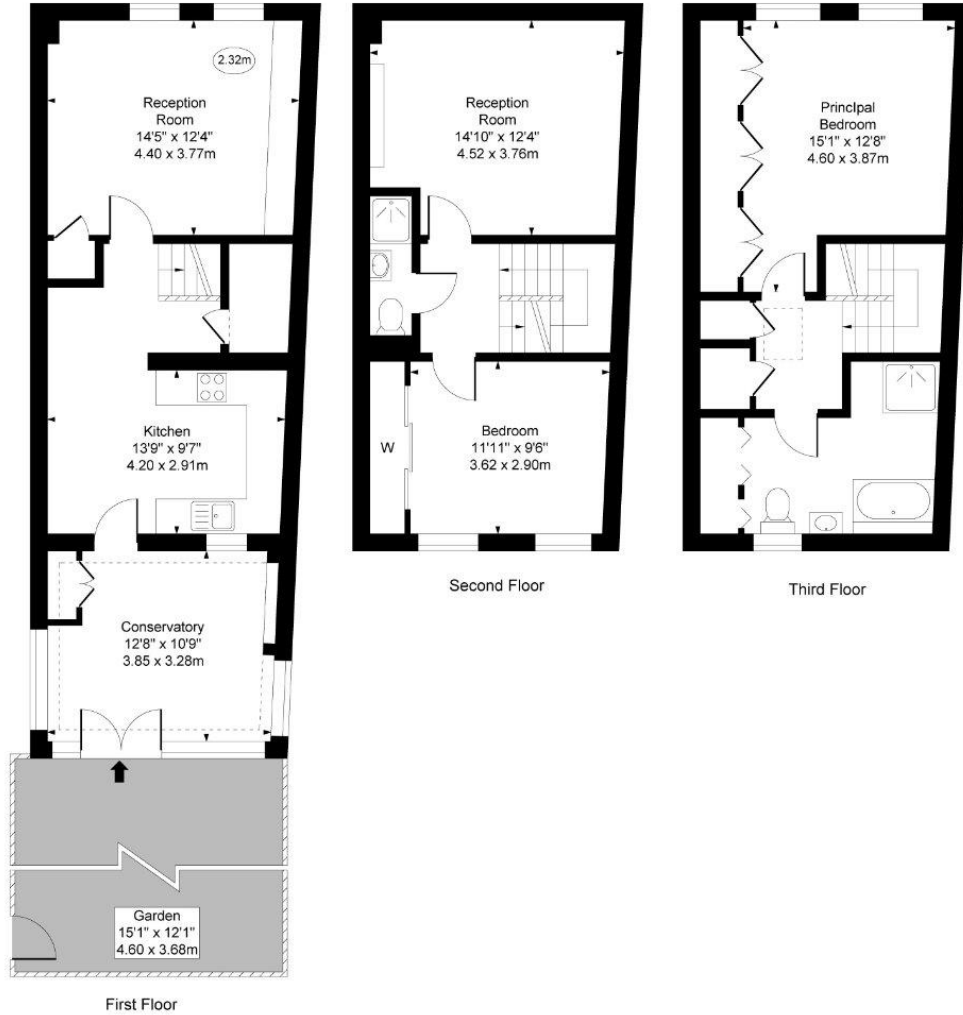


### *Chestertons Covent Garden Sales*

196 Shaftesbury Avenue  
 London  
 WC2H 8JF  
 coventgarden@chestertons.co.uk  
 020 3040 8300  
 chestertons.co.uk

## Drury Lane

○ - Ceiling Height



Approx Gross Internal Area 1,352 Sq Ft - 125.68 Sq M

For Illustration Purpose Only - Not To Scale  
www.goldlens.co.uk  
Ref. No. 27020JH

