



Charter House

Crown Court, WC2B

Asking Price £1,150,000

A bright and well laid out 5th floor apartment positioned in this wonderfully secluded part of Covent Garden & only seconds from the Royal Opera House & The Piazza. The flat comes with secure underground parking and is within a portered development.



Charter House

Crown Court, WC2B

•



Discover the Modern Charm of Charter House

Located on Crown Court, a tranquil pedestrianised street that connects Bow Street and Drury Lane, lies the modern purpose-built residential block, Charter House. This cozy fifth-floor lateral apartment boasts an abundance of natural light and comprises a spacious reception room with dual-aspect windows, a fully-equipped kitchen, two double bedrooms, and a family bathroom. The apartment is presented in good condition with neutral decor and timber flooring to the main living areas. The bright and quiet apartment is perfect for those seeking a rental investment or a central pied-a-terre. The apartment also comes with a weekday

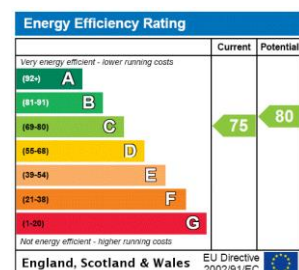
Tenure: Leasehold

Service Charge: £6171 as advised per vendor

Ground Rent: £0

Local Authority: City of Westminster

Council Tax Band: F



Chestertons Covent Garden Sales

196 Shaftesbury Avenue

London

WC2H 8JF

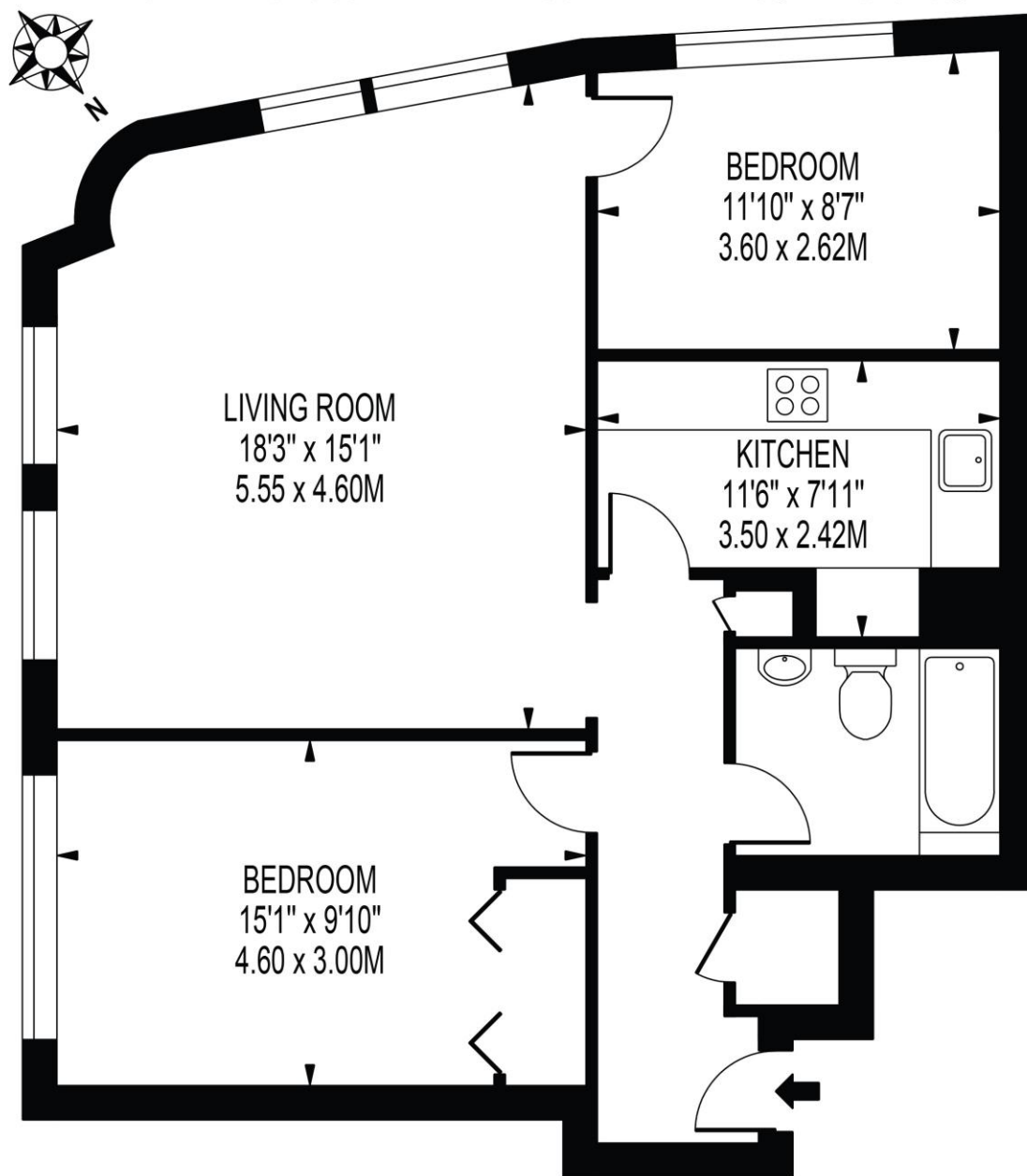
coventgarden@chestertons.co.uk

020 3040 8300

chestertons.co.uk

CHARTER HOUSE

APPROXIMATE GROSS INTERNAL FLOOR AREA: 727 SQ FT - 67.57 SQ M



FIFTH FLOOR

FOR ILLUSTRATION PURPOSES ONLY

THIS FLOOR PLAN SHOULD BE USED AS A GENERAL OUTLINE FOR GUIDANCE ONLY AND DOES NOT CONSTITUTE IN WHOLE OR IN PART AN OFFER OR CONTRACT. ANY INTENDING PURCHASER OR LESSEE SHOULD SATISFY THEMSELVES BY INSPECTION, SEARCHES, ENQUIRIES AND FULL SURVEY AS TO THE CORRECTNESS OF EACH STATEMENT. ANY AREAS, MEASUREMENTS OR DISTANCES QUOTED ARE APPROXIMATE AND SHOULD NOT BE USED TO VALUE A PROPERTY OR BE THE BASIS OF ANY SALE OR LET.

