



Marshall Street

London, W1F

Offers in excess of
£1,164,000

Contemporary flat on the 1st floor of a smart block in the famous Carnaby Village. Nestled behind the hustle and bustle of the world famous Carnaby Street this residence features 2 bed / 2 bath and bright reception with large windows and balcony.

CHESTERTONS



Marshall Street

London, W1F

- Marshall Street Leisure Centre with its many facilities is a minutes walk away.
- There are numerous attractions nearby including Oxford and Regent Street.
- The nearest underground stations are Oxford Circus & Piccadilly Circus.



Contemporary flat on the 1st floor of a smart block in the famous Carnaby Village. Nestled behind the hustle and bustle of the world famous Carnaby Street this residence features 2 bed / 2 bath and bright reception with large windows and balcony.

Tenure: Leasehold 88 years 2 months

Service Charge: £1808.73

Ground Rent: £250

Local Authority: City of Westminster

Council Tax Band: F

Energy Efficiency Rating		
	Current	Potential
Very energy efficient - lower running costs		
A (94-100)		
B (81-93)		
C (69-80)		
D (55-68)	60	64
E (39-54)		
F (21-38)		
G (1-20)		
Not energy efficient - higher running costs		
England, Scotland & Wales EU Directive 2002/91/EC		

Chestertons Covent Garden Sales

196 Shaftesbury Avenue

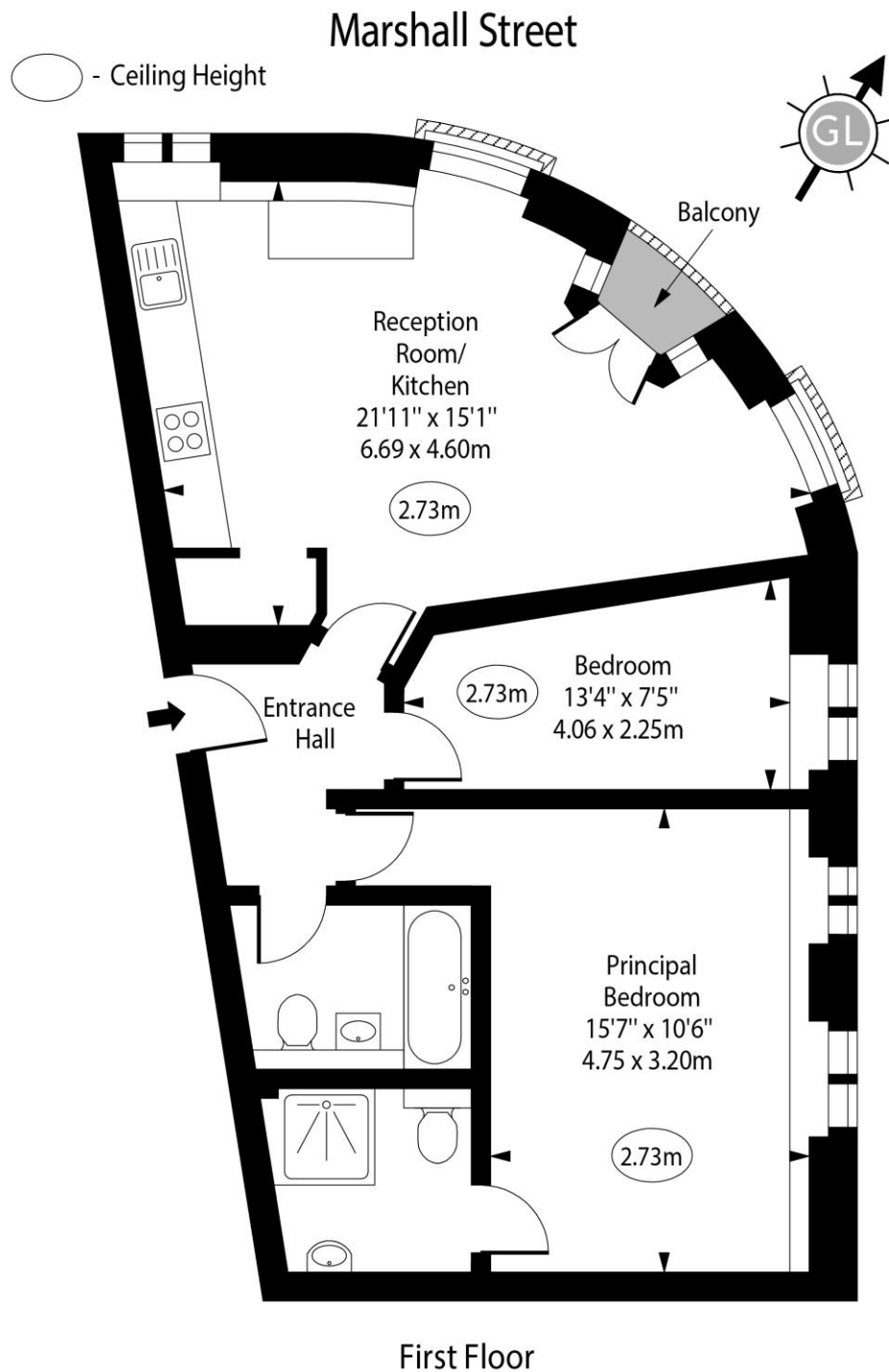
London

WC2H 8JF

coventgarden@chestertons.co.uk

020 3040 8300

chestertons.co.uk



Approx Gross Internal Area 750 Sq Ft - 69.68 Sq M

For Illustration Purposes Only - Not To Scale

www.goldlens.co.uk

Ref. No. 019169R

