



Central St. Giles Piazza

Covent Garden, WC2H

Asking Price £800,000

A contemporary one double bedroom apartment set in the popular Central St Giles Piazza. Offering open-plan fully integrated kitchen with large windows, air-conditioning and 24hr concierge.



Central St. Giles Piazza

Covent Garden, WC2H

- Walking Distance to Tottenham Court Road, Leicester Square and Covent Garden Tube Stations
- Lift Access
- A/C To All Rooms
- 24 Hour Porterage
- Excellent Rental Investment



A contemporary one double bedroom apartment set in the popular Central St Giles Piazza. Offering open-plan fully integrated kitchen with large windows, air-conditioning and 24hr concierge. The development offers high security access, as well as retail, restaurants, cafés and outdoor public piazza. Located in heart of the West-End within walking distance to Tottenham Court Road, Holborn, Leicester Square and Covent Garden Tube Stations.

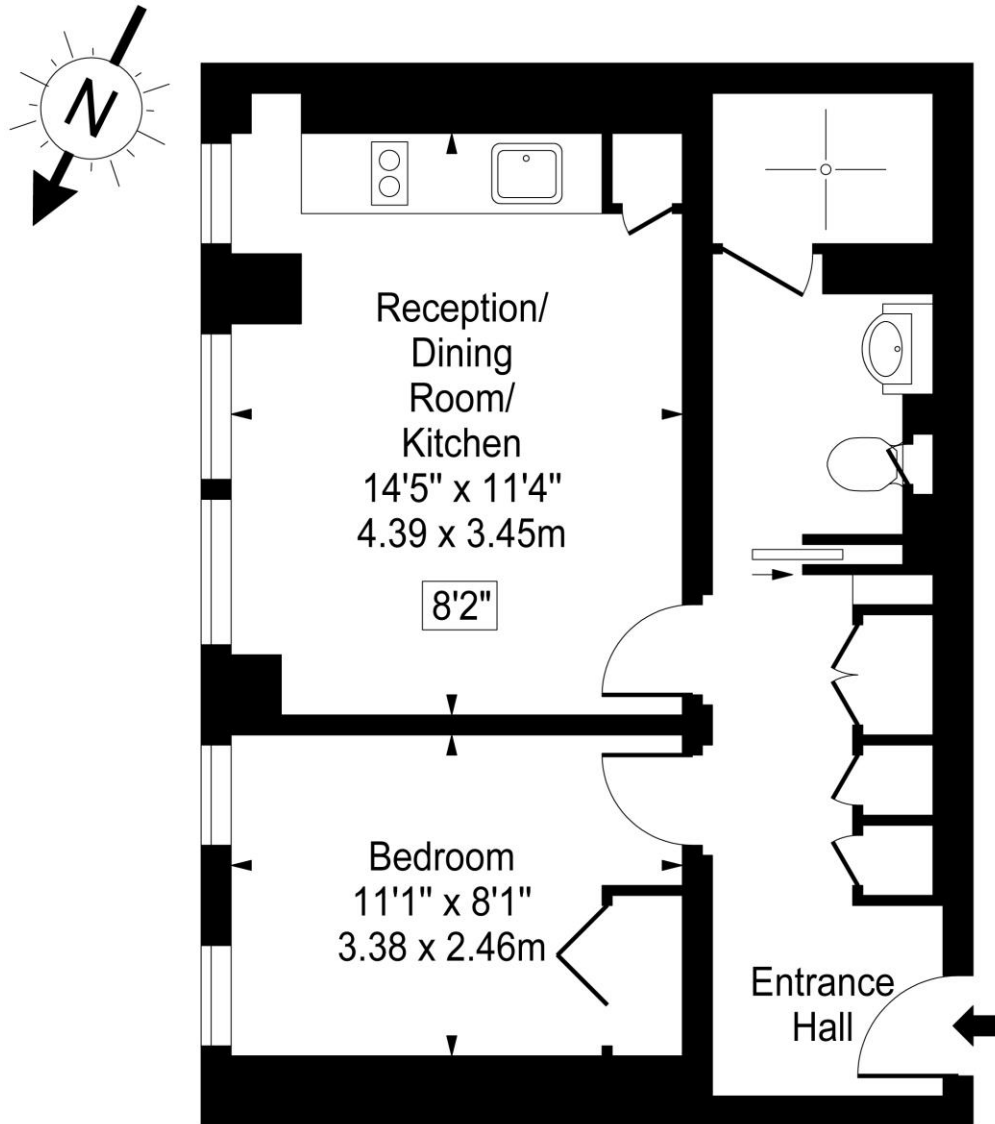
Tenure: Leasehold 136 years remaining
Service Charge: £7545
Ground Rent: £450
Local Authority: London Borough Of Camden
Council Tax Band: E

Energy Efficiency Rating		
	Current	Potential
Very energy efficient - lower running costs		
A (92-100)		
B (81-91)		
C (69-80)	77	77
D (55-68)		
E (39-54)		
F (21-38)		
G (1-20)		
Not energy efficient - higher running costs		
England, Scotland & Wales EU Directive 2002/91/EC		

Chestertons Covent Garden Sales

196 Shaftesbury Avenue
 London
 WC2H 8JF
 coventgarden@chestertons.co.uk
 020 3040 8300
 chestertons.co.uk

Central St Giles Piazza



Third Floor

Approx Gross Internal Area 416 Sq Ft - 38.65 Sq M

For Illustration Purposes Only - Not To Scale

www.goldlens.co.uk

Ref. No. 007652M

