



Wardour Street

London, W1F

Asking Price £775,000

Featuring high ceilings and wrapped around sash windows, this apartment is located within the heart of vibrant Soho with the world class restaurants, bars, shops and theatres on your doorstep.



Wardour Street

London, W1F

- Wardour Street is located in the Soho district of London, amongst some of the world's most renowned amenities.
- Chinatown, Covent Garden and the exclusive boutiques of Mayfair are also close at hand.



Featuring high ceilings and wrapped around sash windows, this apartment is located within the heart of vibrant Soho with the world class restaurants, bars, shops and theatres on your doorstep. Wardour Street is conveniently serviced by Oxford Street, Leicester Square and Piccadilly Circus underground stations.

Tenure: Leasehold 111 years 2 months
Service Charge: Paid to a managing agent (as per the vendor)
Ground Rent: £250
Local Authority: City of Westminster
Council Tax Band: E

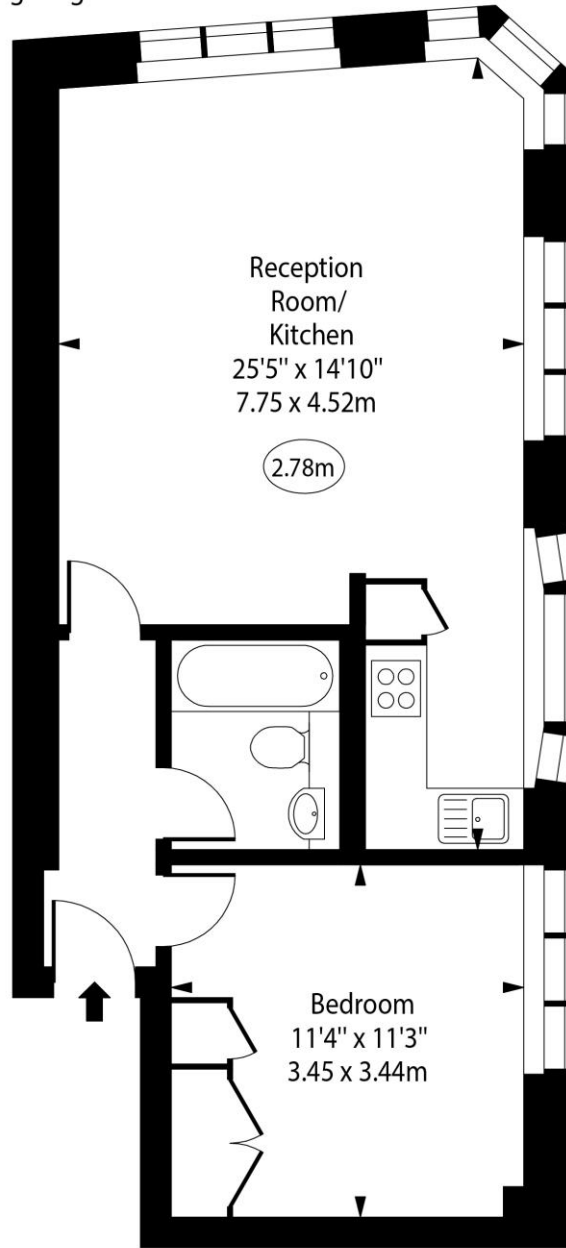
Energy Efficiency Rating		
	Current	Potential
Very energy efficient - lower running costs		
A (92-100)		
B (81-91)		
C (69-80)		
D (55-68)		
E (39-54)	53	63
F (21-38)		
G (1-20)		
Not energy efficient - higher running costs		
England, Scotland & Wales		EU Directive 2002/91/EC

Chestertons Covent Garden Sales

196 Shaftesbury Avenue
 London
 WC2H 8JF
 coventgarden@chestertons.co.uk
 020 3040 8300
 chestertons.co.uk

Wardour Street

○ - Ceiling Height



First Floor

Approx Gross Internal Area 525 Sq Ft - 48.77 Sq M

For Illustration Purposes Only - Not To Scale

www.goldlens.co.uk

Ref. No. 023972K



This paper is
100% recyclable