



Clifford's Inn

Fetter Lane, EC4A

Asking Price £800,000

Sensational London views from this bright unmodernised apartment situated on the 8th floor of the highly sought after Clifford's Inn on Fetter Lane, close to The Royal Court of Justice and a short walking distance to both Covent Garden and the City.



Clifford's Inn

Fetter Lane, EC4A



Wonderful views over London from this unmodernised 2 bedroom apartment in The City. The property is set on the top floor of an exclusive development on Fetter Lane enjoying 24 hr concierge service and lift access. Due to its strategic position the property is greatly located within walking distance of both the West end and the City and benefits from many bus routes passing by. Within few minutes' walk it is possible to reach Chancery Lane, Holborn, Temple and Farringdon Underground Station as well as the train stations of City Thameslink, Blackfriars and Farringdon.

Tenure: Leasehold 145 years 2 months

Service Charge: £2966 Including £878 for sinking fund

Ground Rent: £1

Local Authority: City of London

Council Tax Band: F

Chestertons Covent Garden Sales

196 Shaftesbury Avenue

London

WC2H 8JF

coventgarden@chestertons.co.uk

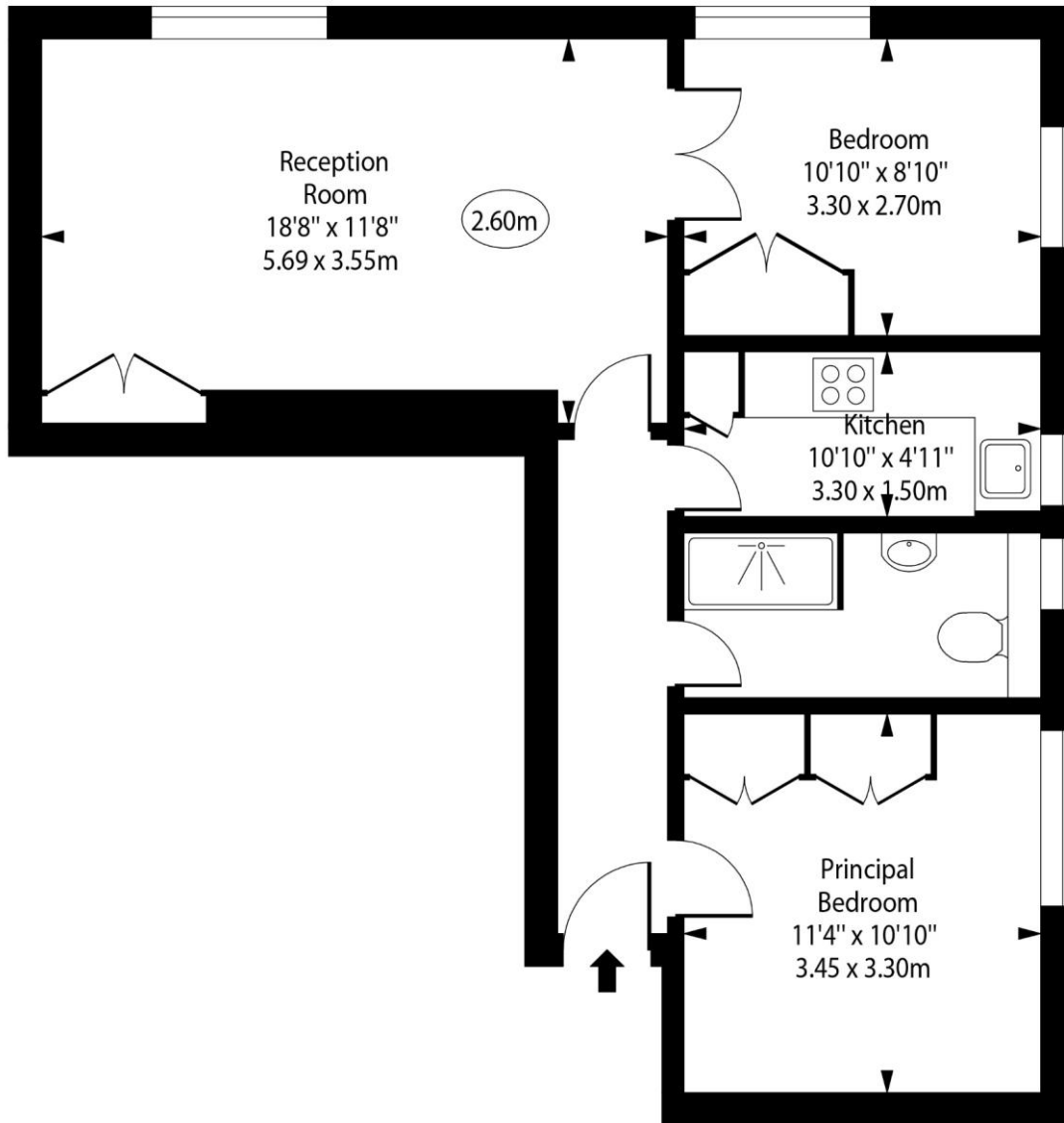
020 3040 8300

chestertons.co.uk

Clifford's Inn, Fetter Lane



○ - Ceiling Height



Eighth Floor

Approx Gross Internal Area 614 Sq Ft - 57.04 Sq M

For Illustration Purposes Only - Not To Scale

www.goldlens.co.uk

Ref. No. 025034IG

