



John Adam Street

London, WC2N

Asking Price £1,000,000

A bright apartment enjoying stunning views of The London Eye. Little Adelphi is an exclusive converted period residence with porter and allocated parking.



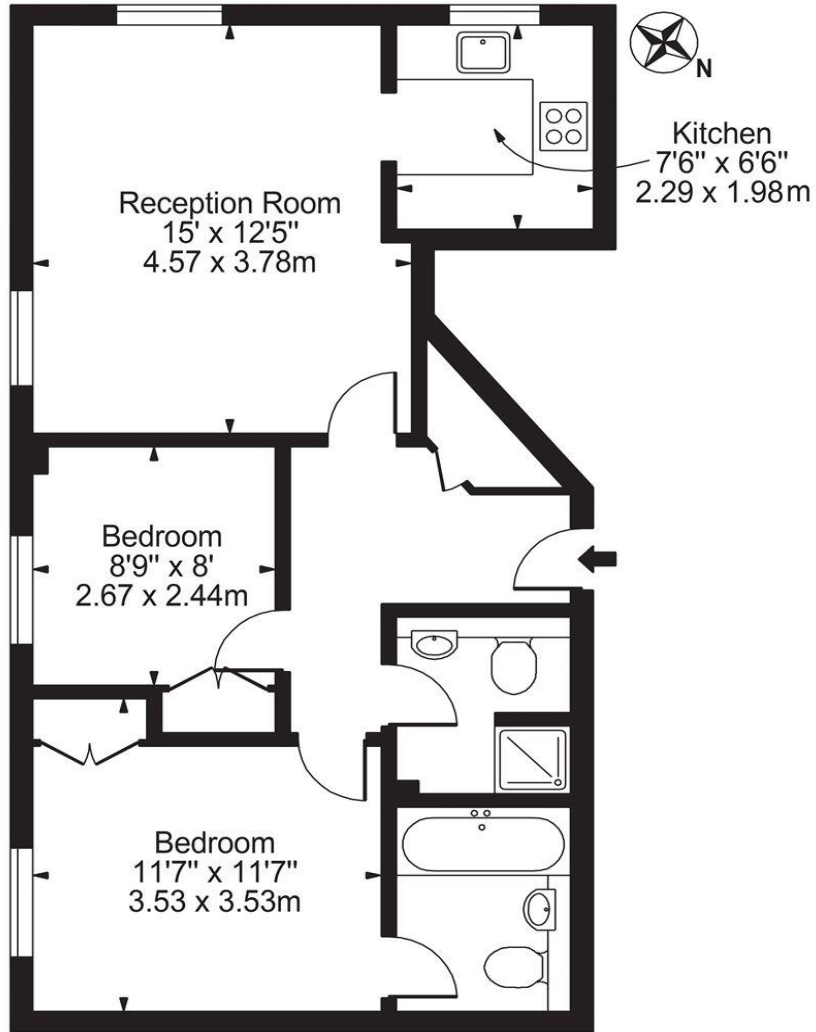
John Adam Street

London, WC2N

- 2 Bedroom Apartment.
- 2 Bathrooms.
- 24 Hour Porter.
- Close to the area's Universities for students and academics.

John Adam Street, WC2

Approx. Gross Internal Area 614 Sq Ft - 57.04 Sq M



Sixth Floor

For Illustration Purposes Only - Not To Scale

This floor plan should be used as a general outline for guidance only and does not constitute in whole or in part an offer or contract. Any intending purchaser or lessee should satisfy themselves by inspection, searches, enquiries and full survey as to the correctness of each statement. Any areas, measurements or distances quoted are approximate and should not be used to value a property or be the basis of any sale or let.

Tenure: Leasehold 972 years 2 months
Service Charge: £0
Ground Rent: £0
Local Authority: City of Westminster
Council Tax Band: G

Energy Efficiency Rating		Current	Potential
Very energy efficient - lower running costs			
(92-100)	A		
(81-91)	B		
(69-80)	C		
(55-68)	D	66	68
(39-54)	E		
(21-38)	F		
(1-20)	G		
Not energy efficient - higher running costs			
England, Scotland & Wales		EU Directive 2002/91/EC	

Chestertons Covent Garden Sales
 196 Shaftesbury Avenue
 London
 WC2H 8JF

Chesterton Global Ltd trading as Chestertons for themselves and for the vendor of this property whose agents they are, give notice that (i) these particulars do not constitute any part of an offer or contract, (ii) all statements contained within these particulars are made without responsibility on the part of Chestertons or the vendor, (iii) whilst made in good faith, none of the statements contained within these particulars are to be relied upon as a statement or representation of fact, (iv) any intending purchasers must satisfy themselves by inspection or otherwise as to the correctness of each of the statements contained within these particulars, (v) the vendor does not make or give either Chestertons or any person in their employment any authority to make or give representation or warranty whatsoever in relation to this property. Wide angle lenses may be used. ©Copyright Chestertons | Chesterton Global Ltd | Registered Office 40 Connaught Street, Hyde Park, London W2 2AB Registered Company Number 05334580.

