



# Ridgmount Gardens

London, WC1E

Offers in excess of  
£1,500,000

An attractive apartment featuring high ceilings with grand proportions throughout and extending to almost 1,500 sq. ft. within one of Bloomsbury's most sought after blocks. Ridgmount Gardens exudes elegance and quintessential London charm.



# Ridgmount Gardens

London, WC1E

- Bloomsbury is quietly nestled to the east of the famous shopping facilities of Oxford Street.
- The area is notable for its concentration of academic establishments and campuses.
- The property benefits from an onsite porter and a key for the attractive Ridgmount gardens.





An attractive apartment featuring high ceilings throughout and extending to almost 1,500 sq. ft. within one of Bloomsbury's most sought after blocks. Ridgmount Gardens exudes elegance and quintessential London charm. This lateral residence also features ornate fireplaces and large bay windows with an abundance of natural light. The apartment further benefits from the convenience of a resident porter and the exclusive use of the immaculately tended communal residents' garden. Ridgmount Gardens is situated in the heart of Bloomsbury, one of London's most fashionable and culturally vibrant neighborhoods, with an abundance of attractions on the doorstep. The world-renowned shops of Oxford Street, the greenery of Regent's Park, and the wealth of acclaimed restaurants along Charlotte Street are just a short stroll away. With numerous transport links moments from your front door, the best of the capital is at your fingertips.

---

**Tenure:** Leasehold 129 years 6 months

**Service Charge:** £8800

**Ground Rent:** £400

**Local Authority:** London Borough Of Camden

**Council Tax Band:** G

---

### *Chestertons Covent Garden Sales*

196 Shaftesbury Avenue

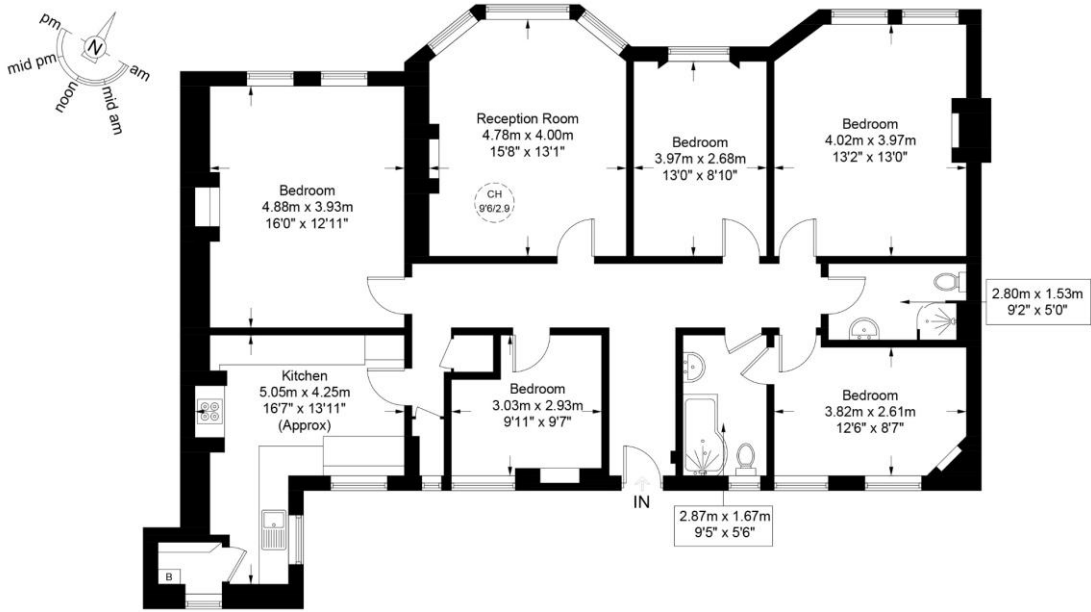
London

WC2H 8JF

coventgarden@chestertons.co.uk

020 3040 8300

chestertons.co.uk



This plan is for layout guidance only and is not drawn to scale unless stated. All dimensions, including windows, doors, and the Total Gross Internal Area (GIA), are approximate. For precise measurements, please consult a qualified architect or surveyor before making any decisions based on this plan.

