



Vale Royal House

36 Newport Court, WC2H

Asking Price £600,000

A very bright and spacious one bedroom apartment on the corner of Soho and in the heart of the West End. Vale Royal House is just off Charing Cross Road and seconds away from Leicester Square and its Underground Station.



Vale Royal House

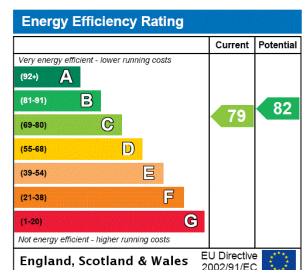
36 Newport Court, WC2H

- Centrally located one bedroom near Soho, China Town and Covent Garden.
- Long Lease.
- Minutes From Leicester Square Tube Station.
- Vale Royal House is also superbly located for Theatreland.



A very bright and spacious one bedroom apartment on the corner of Soho and in the heart of the West End. Vale Royal House is just off Charing Cross Road and seconds away from Leicester Square and its Underground Station.

Tenure: Leasehold 178 years 4 months
Service Charge: £2192.43 as advised by the vendor
Ground Rent: £0
Local Authority: City of Westminster
Council Tax Band:

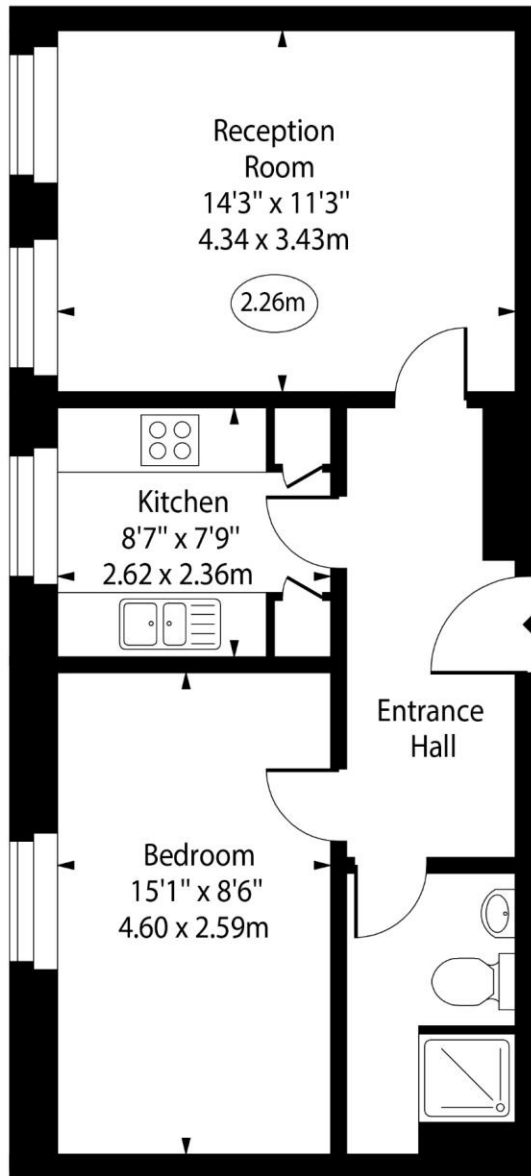


Chestertons Covent Garden Sales

196 Shaftesbury Avenue
 London
 WC2H 8JF
 coventgarden@chestertons.co.uk
 020 3040 8300
 chestertons.co.uk

Vale Royal House, Newport Court

○ - Ceiling Height



First Floor

Approx Gross Internal Area 500 Sq Ft - 46.45 Sq M

For Illustration Purposes Only - Not To Scale

www.goldlens.co.uk

Ref. No. 023457E

