



# Beaumont Buildings

Martlett Court, WC2B

Asking Price £500,000

Elegantly designed one bedroom flat situated on the second floor of this highly sought after gated development in Central Covent Garden. Martlett Court enjoys beautifully landscaped gardens and a traffic free location.



# Beaumont Buildings

Martlett Court, WC2B

- Bright Apartment Perfectly Placed To Indulge In All That Central London Has To Offer.
- Forming Part Of A Well Maintained Gated Red Brick Building Tucked Away On A Pedestrianised Street In One Of London's Most Coveted Post Codes.
- C.P Hart fitted shower room - Engineered oak flooring.



Elegantly designed one bedroom flat situated on the second floor of this highly sought after gated development in Central Covent Garden. Martlett Court enjoys beautifully landscaped gardens and a traffic free location.

**Tenure:** Leasehold 179 years 9 months  
**Service Charge:** £861.14  
**Ground Rent:** £0  
**Local Authority:** City of Westminster  
**Council Tax Band:** C

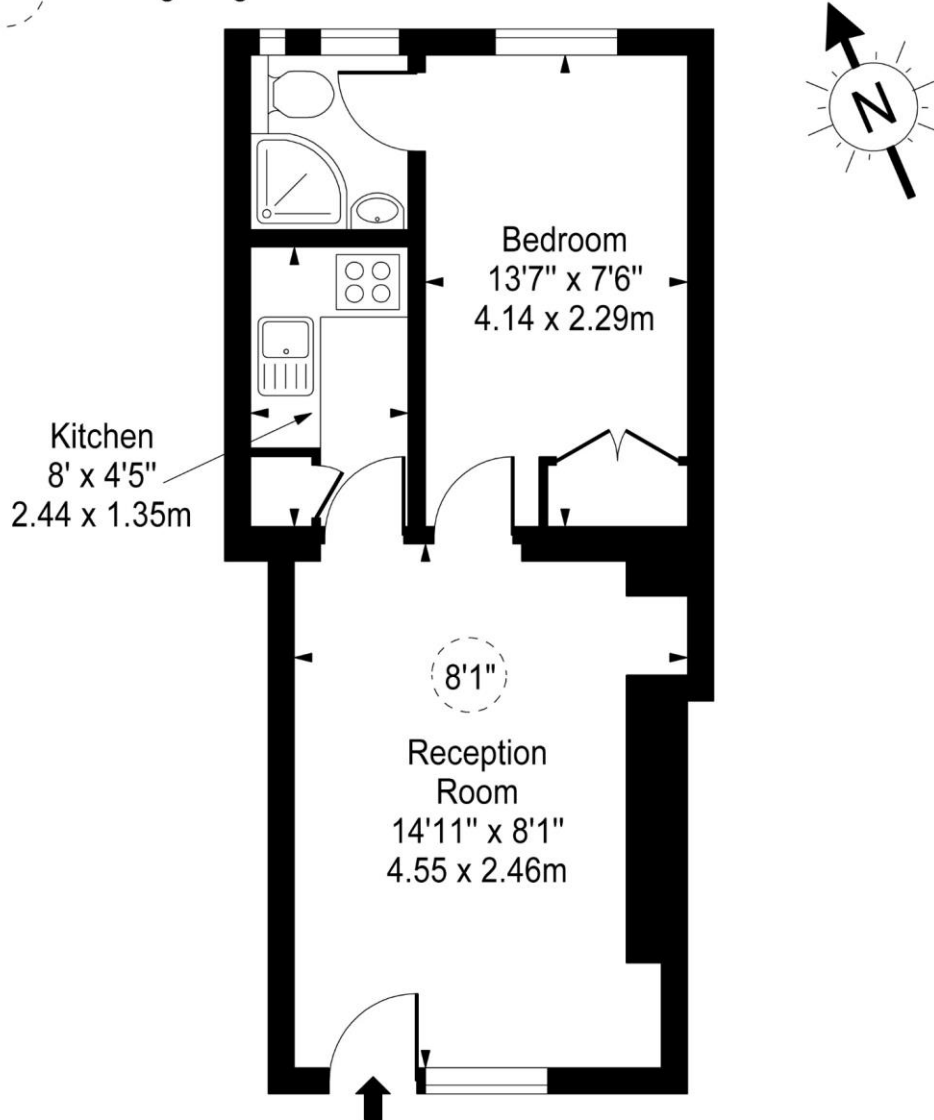
| Energy Efficiency Rating                    |   | Current                 | Potential |
|---|---|-------------------------|-----------|
| Very energy efficient - lower running costs | A |                         |           |
| (92-100)                                    | B |                         | 82        |
| (81-91)                                     | C |                         |           |
| (69-80)                                     | D | 62                      |           |
| (55-68)                                     | E |                         |           |
| (39-54)                                     | F |                         |           |
| (21-38)                                     | G |                         |           |
| Not energy efficient - higher running costs |   |                         |           |
| England, Scotland & Wales                   |   | EU Directive 2002/91/EC |           |

### *Chestertons Covent Garden Sales*

196 Shaftesbury Avenue  
 London  
 WC2H 8JF  
 coventgarden@chestertons.co.uk  
 020 3040 8300  
 chestertons.co.uk

# Beaumont Buildings, Martlett Court

 - Ceiling Height



Second Floor

Approx Gross Internal Area **334 Sq Ft - 31.03 Sq M**

For Illustration Purposes Only - Not To Scale

[www.goldlens.co.uk](http://www.goldlens.co.uk)

Ref. No. 014635JU

