

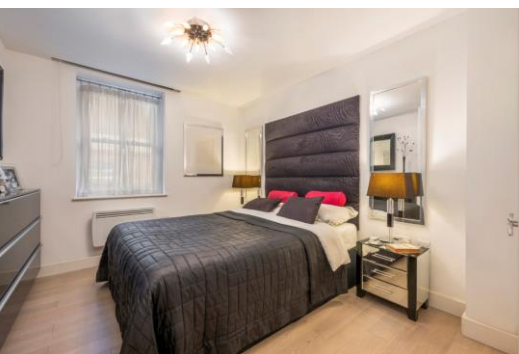


Huntley Street

Bloomsbury, WC1E

Asking Price £950,000

Modern and elegant two-bedroom apartment for sale within this popular mansion block on the borders of Fitzrovia and Bloomsbury. The block benefits from a day porter and a share of freehold.



Huntley Street

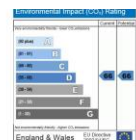
Bloomsbury, WC1E

- Share of Freehold.
- Huntley Street is well situated for the local amenities of Fitzrovia with its array of shops, cafes and restaurants.
- Nearby great transport links at Goodge Street and Tottenham Court Road stations.



Modern and elegant two-bedroom apartment for sale within this popular mansion block on the borders of Fitzrovia and Bloomsbury. The block benefits from a day porter and a share of freehold.

Tenure: Share of Freehold
Service Charge: £3818.3
Ground Rent: TBC
Local Authority: Camden
Council Tax Band: F

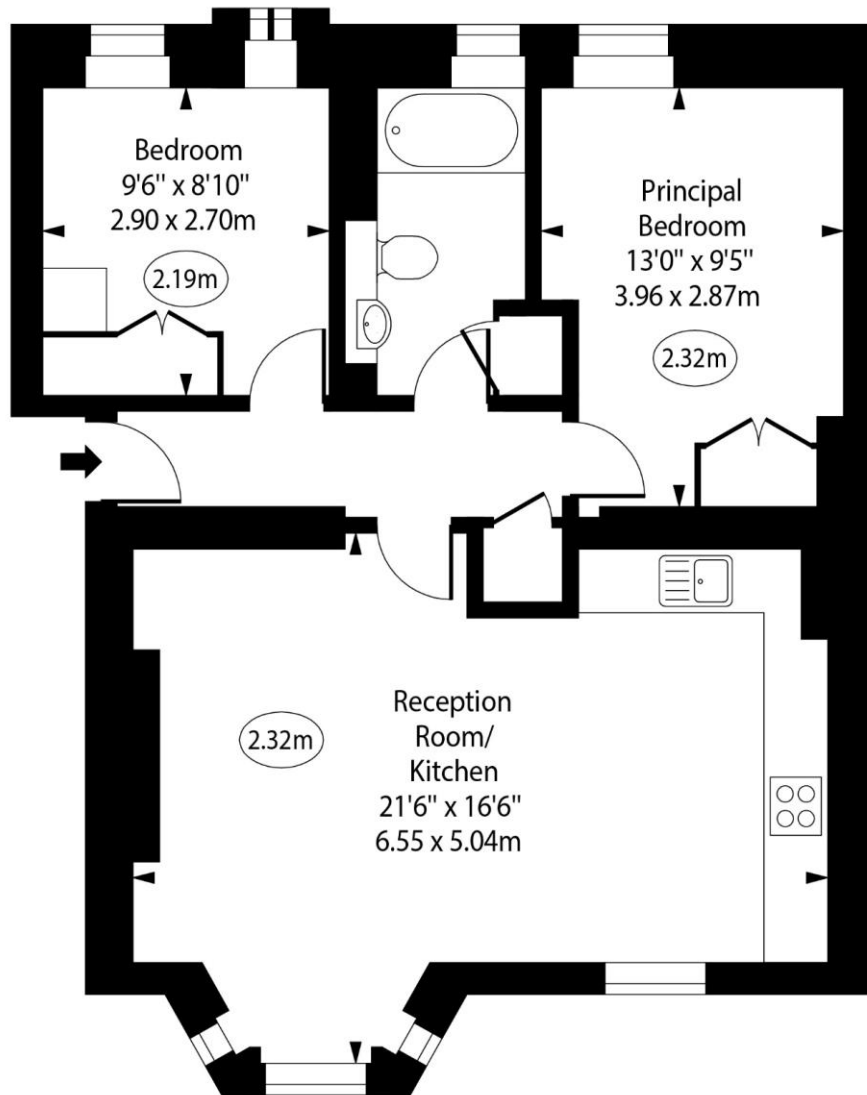
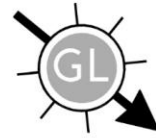


Chestertons Covent Garden Sales

196 Shaftesbury Avenue
 London
 WC2H 8JF
 coventgarden@chestertons.co.uk
 020 3040 8300
 chestertons.co.uk

Huntley Street, Bloomsbury, Covent Garden

○ - Ceiling Height



Lower Ground Floor

Approx Gross Internal Area 635 Sq Ft - 58.99 Sq M

For Illustration Purposes Only - Not To Scale

www.goldlens.co.uk

Ref. No. 022687R

