



Seven Dials Court

Shorts Gardens, WC2H

Asking Price £1,500,000

A rarely available and peacefully positioned duplex residence within a period building on Shorts Gardens, one of the seven roads that makes up the iconic Seven Dials in Covent Garden. The property forms part of a secure gated modern complex.



Seven Dials Court

Shorts Gardens, WC2H

- Short walking distance to Covent Garden, Leicester Square and Tottenham Court Road stations.
- Close to restaurants and theatres.
- Secure quiet gated development.



A rarely available and peacefully positioned duplex within a period building on Shorts Gardens, one of the seven roads that makes up the iconic Seven Dials in Covent Garden. This bright residence is split over two levels and is moments away from all the amenities the area offers.

Tenure: Leasehold 174 years

Service Charge: £2832

Ground Rent: £0

Local Authority: London Borough Of Camden

Council Tax Band: G

Energy Efficiency Rating		
	Current	Potential
Very energy efficient - lower running costs		
A (94-100)		
B (81-93)		
C (69-80)	74	79
D (55-68)		
E (39-54)		
F (21-38)		
G (1-20)		
Not energy efficient - higher running costs		
England, Scotland & Wales		EU Directive 2002/91/EC

Chestertons Covent Garden Sales

196 Shaftesbury Avenue

London

WC2H 8JF

coventgarden@chestertons.co.uk

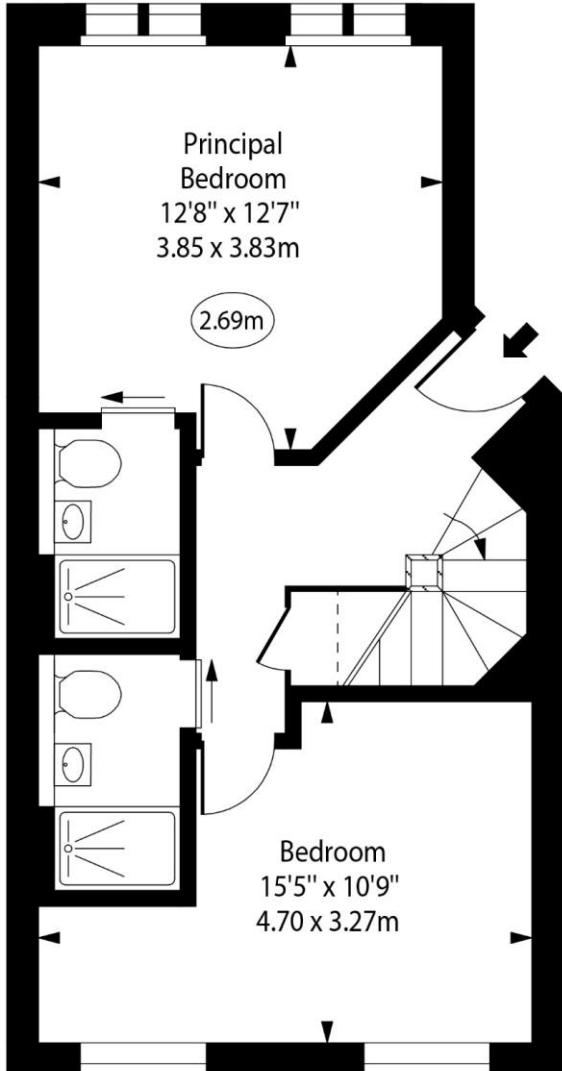
020 3040 8300

chestertons.co.uk

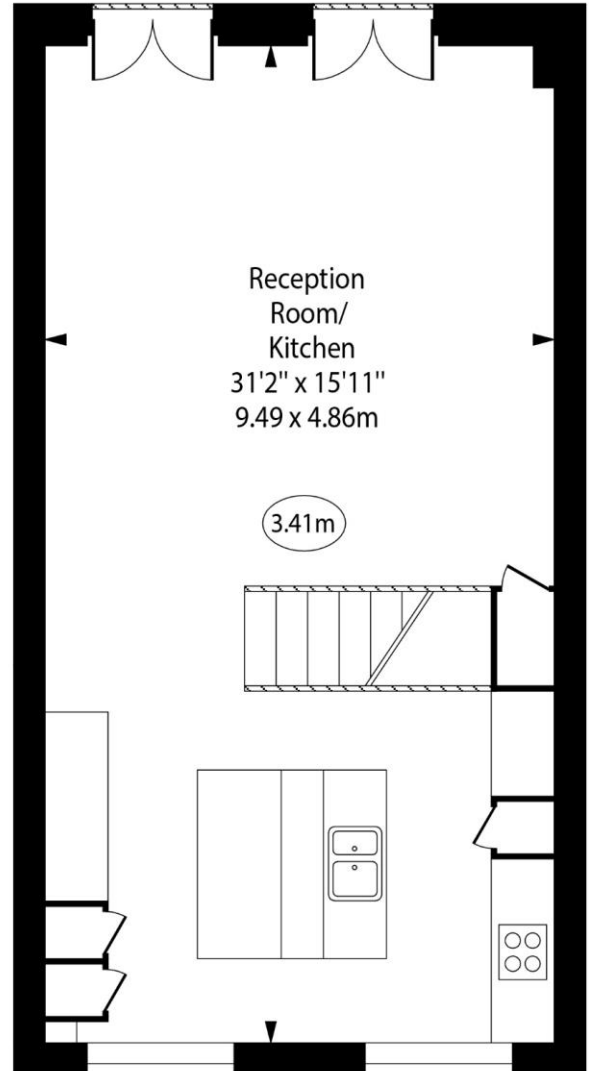
Seven Dials Court, Shorts Gardens



○ - Ceiling Height



Third Floor



Fourth Floor

Approx Gross Internal Area

947 Sq Ft - 87.98 Sq M

For Illustration Purposes Only - Not To Scale

www.goldlens.co.uk

Ref. No. 022213MS

