



# John Adam House

Asking Price £1,700,000

17-19 John Adam Street, WC2N

A spacious three bedroom apartment providing bright and comfortable accommodation within a purpose built block tucked away between the Strand and the Embankment. There is also allocated underground parking, balcony and lift access.



# John Adam House

17-19 John Adam Street, WC2N

- Share of Freehold.
- Close proximity to the River Thames and Embankment Gardens.
- Covent Garden, Charing Cross and Embankment Stations are all close by.
- Quietly situated within the prized Adelphi Conservation Area.





A spacious three bedroom apartment providing bright and comfortable accommodation within a purpose built block tucked away between the Strand and the Embankment. There is also allocated underground parking and lift access. The famous Covent Garden is only minutes away with its unrivalled selection of restaurants, cafes, bars and shops.

---

**Tenure:** Leasehold 974 years 5 months

**Service Charge:** £0

**Ground Rent:** £0

**Local Authority:** City Of Westminster

**Council Tax Band:** H

---

### *Chestertons Covent Garden Sales*

196 Shaftesbury Avenue

London

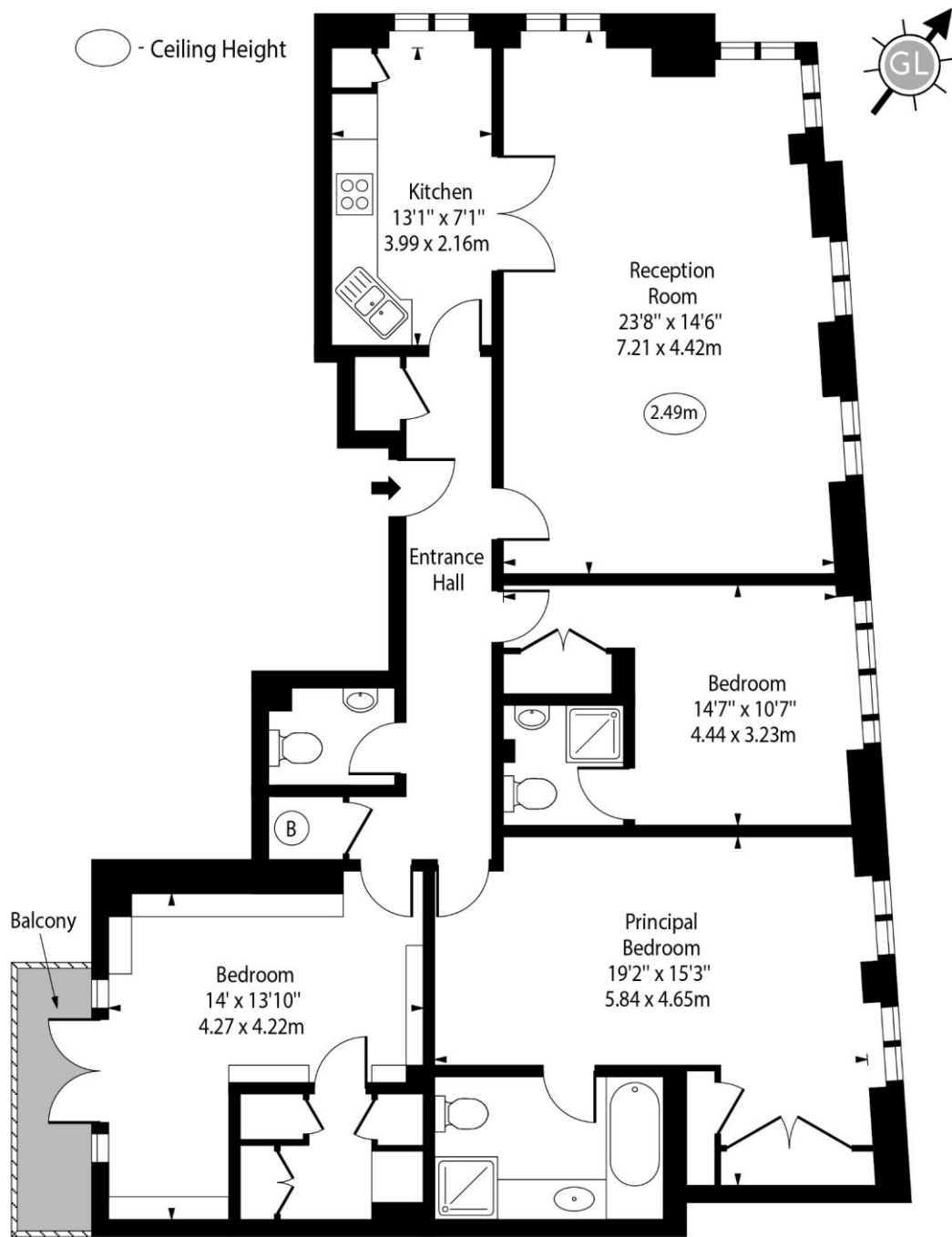
WC2H 8JF

[sales.coventgarden.enquiries@chestertons.co.uk](mailto:sales.coventgarden.enquiries@chestertons.co.uk)

020 3040 8300

[chestertons.co.uk](http://chestertons.co.uk)

# John Adam Street



Second Floor

Approx Gross Internal Area 1265 Sq Ft - 117.52 Sq M

For Illustration Purposes Only - Not To Scale

[www.goldlens.co.uk](http://www.goldlens.co.uk)

Ref. No. 020419E

