



# Portugal Street

London, WC2A

Asking Price £1,560,000

Fabulous one bedroom apartment at the exclusive and sought after Lincoln's Square. This exquisite property situated on the 3rd floor and features a spacious living area comprising a state-of-the-art open plan kitchen and bright reception area.



# Portugal Street

London, WC2A

- Lincoln Square is located equidistance of Holborn, Chancery Lane & Temple Underground Stations.
- Exclusive amenities include a 25 meter pool with adjoining vitality pool, cinema, gym.
- Access to residents lounge, private dining rooms, kids soft play area along with a 24 hour concierge service





Fabulous one bedroom apartment at the exclusive and sought after Lincoln's Square. This exquisite property situated on the 3rd floor and features a spacious living area comprising a state-of-the-art open plan kitchen and bright reception area. Amenities include a 24 hour concierge, gym, swimming pool, spa facilities, residents' lounge and landscaped gardens. Located in Lincoln's Inn Fields by the Royal Courts of Justice, London School of Economics and King's College London, this new residential development is perfectly positioned between the financial hub of The City and the lively Covent Garden. Nearby transport links include Temple Underground Station, Chancery Lane Underground Station (Central line), Holborn Station (Central and Piccadilly lines) and Covent Garden Station (Piccadilly line).

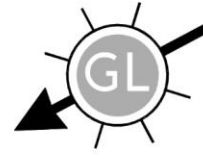
**Tenure:** Leasehold 994 years 9 months  
**Service Charge:** £0  
**Ground Rent:** £0  
**Local Authority:** City Of Westminster  
**Council Tax Band:** F

Energy Efficiency Rating		Current	Potential
Very energy efficient - lower running costs			
(92-100)	A		
(81-91)	B	85	85
(69-80)	C		
(55-68)	D		
(39-54)	E		
(21-38)	F		
(1-20)	G		
Not energy efficient - higher running costs			
England, Scotland & Wales		EU Directive 2002/91/EC	

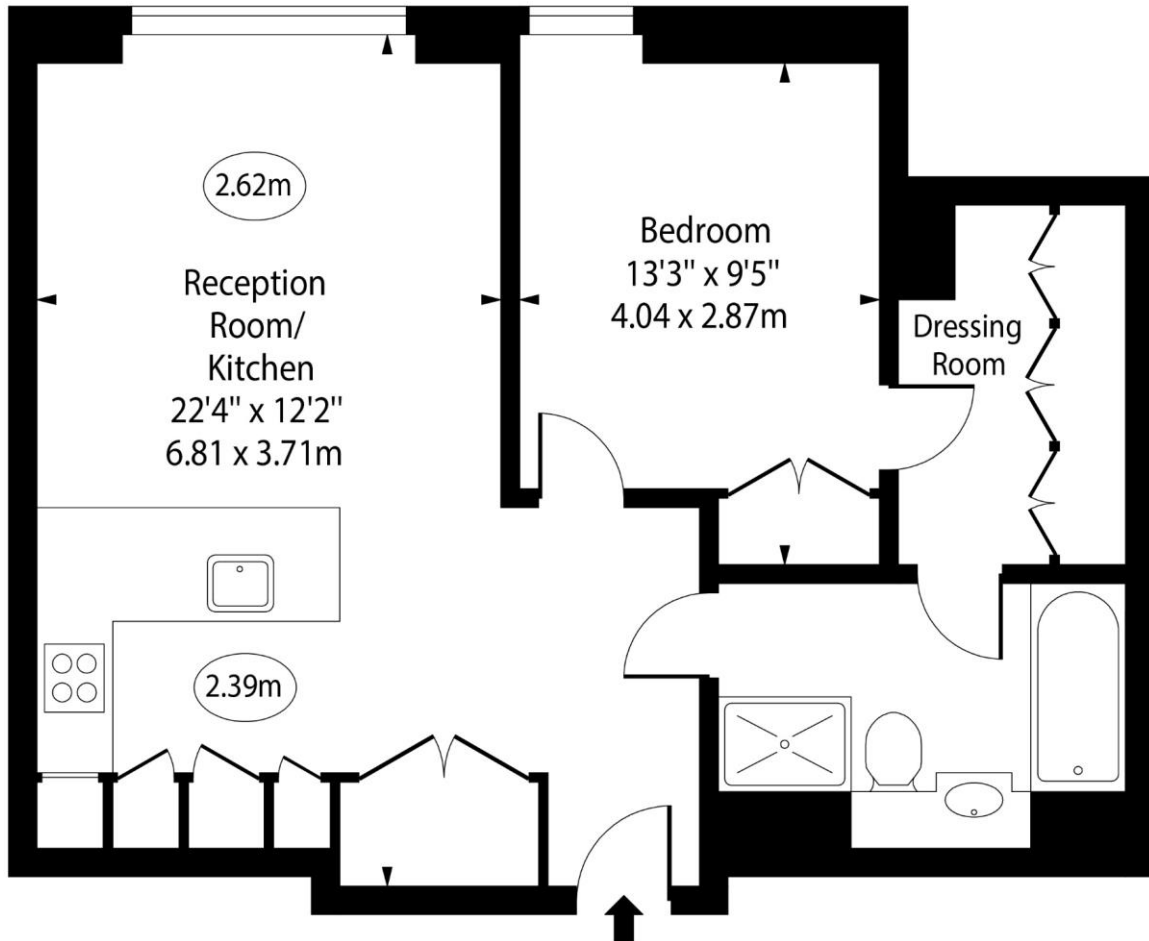
### *Chestertons Covent Garden Sales*

196 Shaftesbury Avenue  
 London  
 WC2H 8JF  
[sales.coventgarden.enquiries@chestertons.co.uk](mailto:sales.coventgarden.enquiries@chestertons.co.uk)  
 020 3040 8300  
[chestertons.co.uk](http://chestertons.co.uk)

# Portugal Street



○ - Ceiling Height



Third Floor

Approx Gross Internal Area      586 Sq Ft - 54.44 Sq M

For Illustration Purposes Only - Not To Scale

[www.goldlens.co.uk](http://www.goldlens.co.uk)

Ref. No. 020772JU

