



# Mercer Street

## Covent Garden, WC2H

£975,000 Asking Price

Enjoying tons of natural light and an enviable location in the heart of Covent Garden this two-bedroom duplex flat is offered in excellent condition and within easy reach of the transport links of Covent Garden, Leicester Sq. & Tottenham Court Road.





# Mercer Street

## Covent Garden, WC2H

- This exceptional bright and airy apartment is perfect for anyone who wants to be in the heart of this exciting area, either for their own use or as a very strong investment.
- Seven Dials boasts a bustling village feel in the heart of the West End, with theatres, bars, boutique shops, popular eateries and cafes. Mercer Street is ideally located between the triangle of Leicester Square, Covent Garden and Tottenham Court Road underground stations providing a number of varied options of travel make this an ideal central London location.



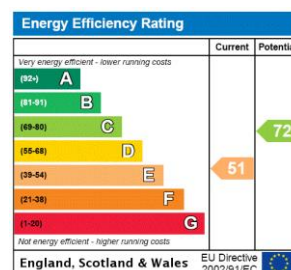


This exceptional bright and airy apartment is perfect for anyone who wants to be in the heart of this exciting area, either for their own use or as a very strong investment.

Seven Dials boasts a bustling village feel in the heart of the West End, with theatres, bars, boutique shops, popular eateries and cafes. Mercer Street is ideally located between the triangle of Leicester Square, Covent Garden and Tottenham Court Road underground stations providing a number of varied options of travel make this an ideal central London location.

**Tenure:** Share of Freehold 90 years and 9 months remaining (01/10/2021)

**Service Charge:** £2,751 (as advised by Seller)



### *Chestertons Covent Garden Sales*

196 Shaftesbury Avenue

London

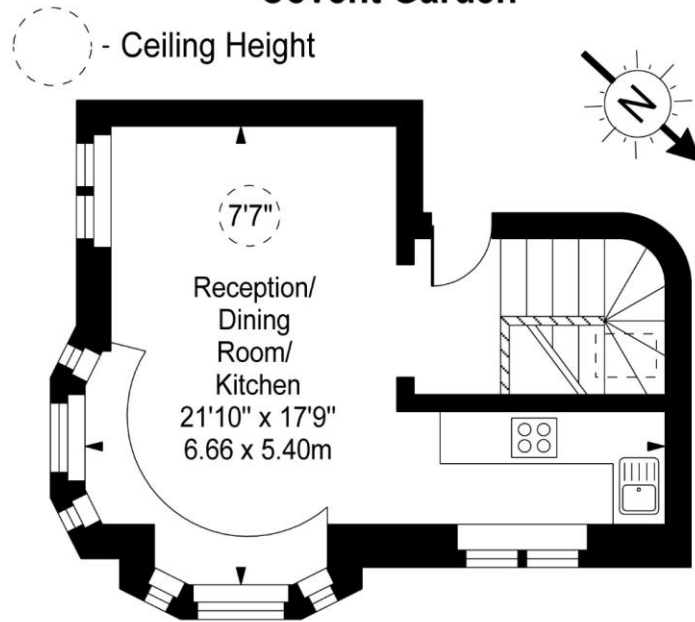
WC2H 8JF

[sales.coventgarden.enquiries@chestertons.com](mailto:sales.coventgarden.enquiries@chestertons.com)

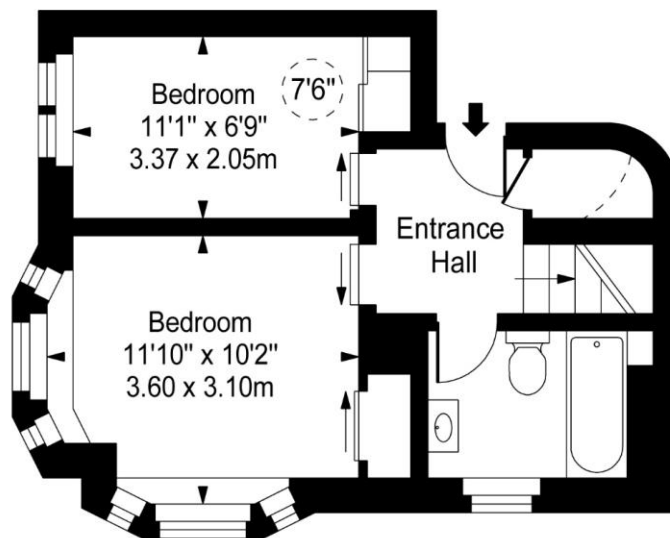
020 3040 8300

[chestertons.com](https://www.chestertons.com)

# Mercer Street, Covent Garden



Fifth Floor



Fourth Floor

**Approx Gross Internal Area 625 Sq Ft - 58.06 Sq M**

For Illustration Purposes Only - Not To Scale

[www.goldlens.co.uk](http://www.goldlens.co.uk)

Ref. No. 014683AG

