



Highbury Park

Highbury, N5

£800,000 Asking Price

An oversized two double bedroom, two bathroom apartment situated on the lower level of a charming stucco fronted Georgian mid terraced house, set within this Grade II listed terrace right in the very heart of Highbury, moments from Highbury Barn.



Highbury Park

Highbury, N5

- Oversized (circa 1,027 sqft) apartment
- Two double bedrooms
- Family bathroom suite and additional en-suite shower room (plus separate W.C)
- Spacious, cleverly designed kitchen/dining room
- Private courtyard garden
- Situated in an imposing Grade II listed terrace
- Only moments from Highbury Barn



An oversized two double bedroom, two bathroom apartment situated on the lower level of a charming stucco fronted Georgian mid terraced house, set within this Grade II listed terrace right in the very heart of Highbury, moments from Highbury Barn. Accommodation is well presented and generously proportioned, comprising; a cleverly designed kitchen/dining area converted from the extra width hallway upon entering the apartment, separate reception room with a feature fireplace, principal bedroom that features excellent built in storage, an en suite bathroom and access to the private courtyard garden. To the rear of the apartment is the second double bedroom, also featuring an en-suite shower room and separate W.C as well as further access to the courtyard. Highbury Park sits right in the very heart of Highbury, within the Highbury Fields conservation area. The property is supremely well placed for the greenery and amenities of Highbury Fields, the shops of Highbury Barn including the renowned Godfreys butchers, fishmongers and Da Mario's delicatessen. Transport can be found via a short walk to Highbury & Islington station (National Rail & Victoria Line), along with Arsenal Underground (Piccadilly Line). The renowned restaurant, Farang can be found locally within Highbury, a must try!

Tenure: Share of Freehold

Service Charge: £TBA

Ground Rent: £TBA

Chestertons Islington Sales

327-329 Upper Street

Islington

London

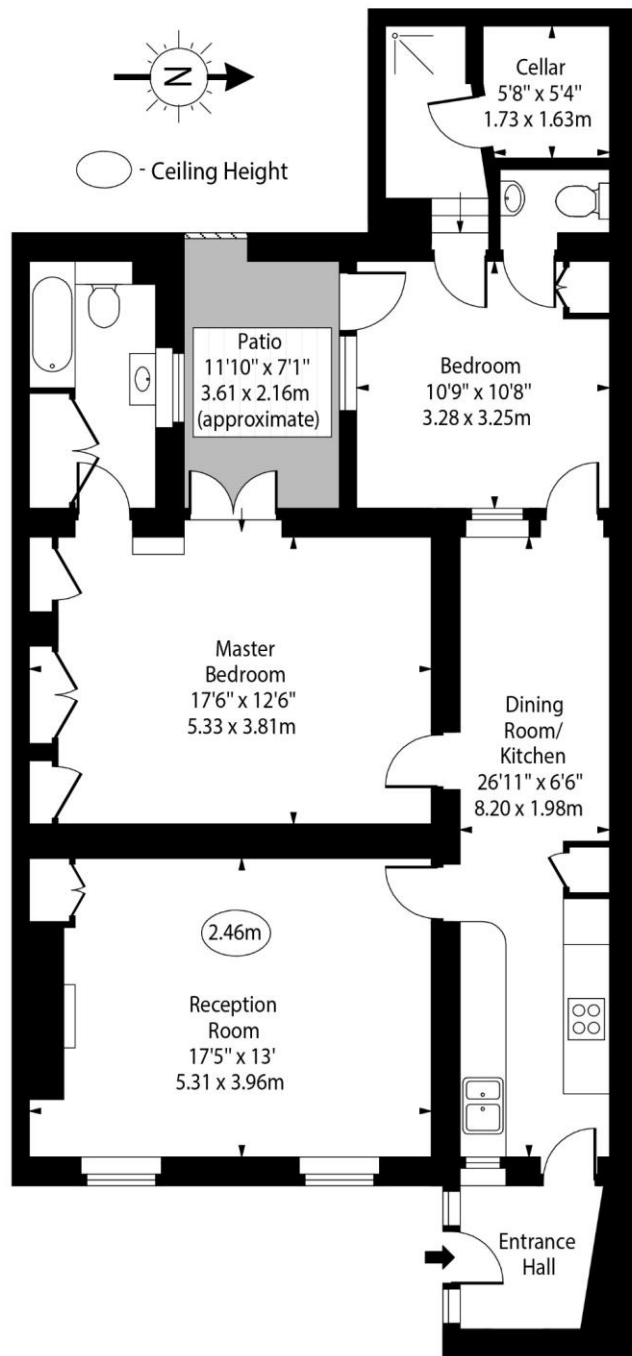
N1 2XQ

sales.islington@chestertons.com

020 7359 9777

[chestertons.com](https://www.chestertons.com)

Highbury Park, N5



Lower Ground Floor

Approx Gross Internal Area 1027 Sq Ft - 95.41 Sq M
(Including Cellar)

For Illustration Purposes Only - Not To Scale
www.goldlens.co.uk
Ref. No. 016554E

