

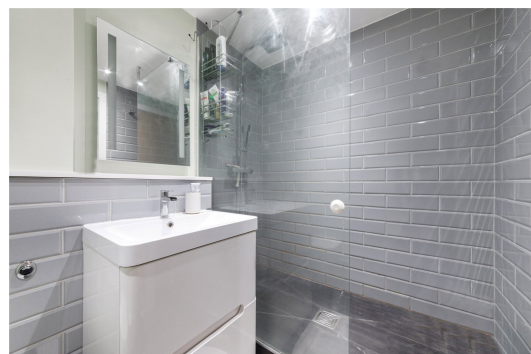


Rodin Court

25 Essex Road, N1

£800,000 Asking Price

A spacious 2 double bedroom apartment set across the 2nd floor of this extremely highly regarded modern development nestled neatly in the very heart of Islington, moments from Islington Green. It should be noted that there is a secure underground parking space available by separate negotiation.



Rodin Court

25 Essex Road, N1

- Spacious 2 double bedroom apartment
- Master bedroom with en-suite shower room
- 25ft reception/ dining room
- Separate kitchen
- 24 hour concierge
- Landscaped communal garden
- Superb access to Angel station (Northern Line)



A spacious 2 double bedroom apartment set across the 2nd floor of this extremely highly regarded modern development nestled neatly in the very heart of Islington, moments from Islington Green. Accommodation comprises master bedroom with built-in wardrobes and spacious en-suite shower room, double second bedroom also with built-in wardrobes, 25ft reception/ dining room with a separate fitted kitchen and a cleverly designed family bathroom with bath and separate walk-in shower. It should be noted that the bathroom & en-suite shower room have been re-fitted by the current owners. Rodin Court forms part of the Angel On The Green development, built by the locally renowned Grove Manor Homes, with the centre piece being a landscaped communal garden, offering peace and tranquillity in the heart of the hustle and bustle of an otherwise vibrant and buzzing location, with the benefit of a 24 hour concierge and CCTV. The bars, restaurants and shops of Upper Street are almost literally on your door step, with the transport at Angel Underground offering good links to the City and West End, along with both National Rail and the Underground at Highbury & Islington.

****It should be noted that there is a secure underground parking space available by separate negotiation.**

Tenure: Leasehold

Chestertons Islington Sales

327-329 Upper Street

Islington

London

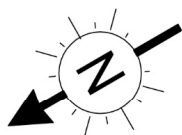
N1 2XQ

sales.islington@chestertons.com

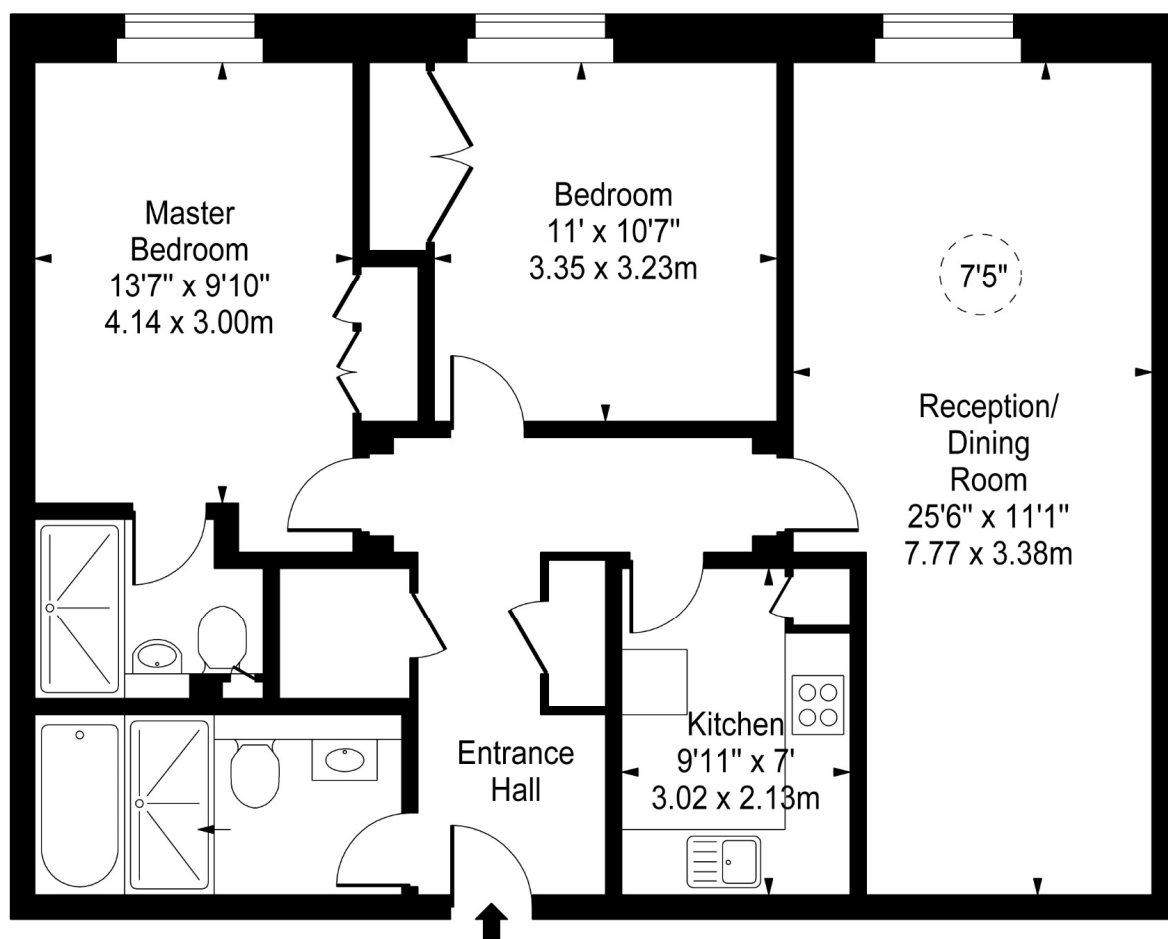
020 7359 9777

[chestertons.com](https://www.chestertons.com)

Rodin Court, Angel On The Green, Essex Road, N1



○ - Ceiling Height



Second Floor

Approx Gross Internal Area **867 Sq Ft - 80.54 Sq M**

For Illustration Purposes Only - Not To Scale

www.goldlens.co.uk

Ref. No. 013125K