



Highfield Court

New North Road, N1

Asking Price £800,000

A bright and spacious 2 double bedroom, 2 bathroom modern apartment set on the third floor of landmark development moments from the amenities and transport links of Old Street and Shoreditch whilst being set in a quiet location.

CHESTERTONS



Highfield Court

New North Road, N1

- 2 double bedroom apartment
- 2 bathrooms
- Open-plan kitchen/living space
- Quiet location
- Balcony
- Moments from Old Street roundabout



A bright and spacious 2 double bedroom, 2 bathroom modern apartment set on the third floor of landmark development moments from the amenities and transport links of Old Street and Shoreditch. The property is bright and well-presented comprising; open-plan kitchen/living/dining space leading on to the balcony overlooking the landscaped well-maintained gardens perfect for al-fresco entertaining; two spacious double bedrooms both with built-in wardrobes and with the master benefitting from an en-suite shower room; the family bathroom is luxurious with a bath and over-head shower. Located on the 5th floor of the development is a spectacular communal roof terrace with herb garden. The property offers super convenient access to the delights of Hoxton Square, Old Street and Shoreditch High Street, with their wealth of bars, restaurants, shops and boutique galleries. Old Street is the closest Underground station which sits on the Northern Line with trains to Bank, London Bridge and Kings Cross.

Tenure: Leasehold 119 years 5 months

Service Charge: £3804

Ground Rent: £300

Local Authority: London Borough of Hackney

Council Tax Band: D

Score	Energy rating	Current	Potential
92+	A		
81-91	B	86 B	86 B
69-80	C		
55-68	D		
39-54	E		
21-38	F		
1-20	G		

Chestertons Islington Sales

327-329 Upper Street

Islington

London

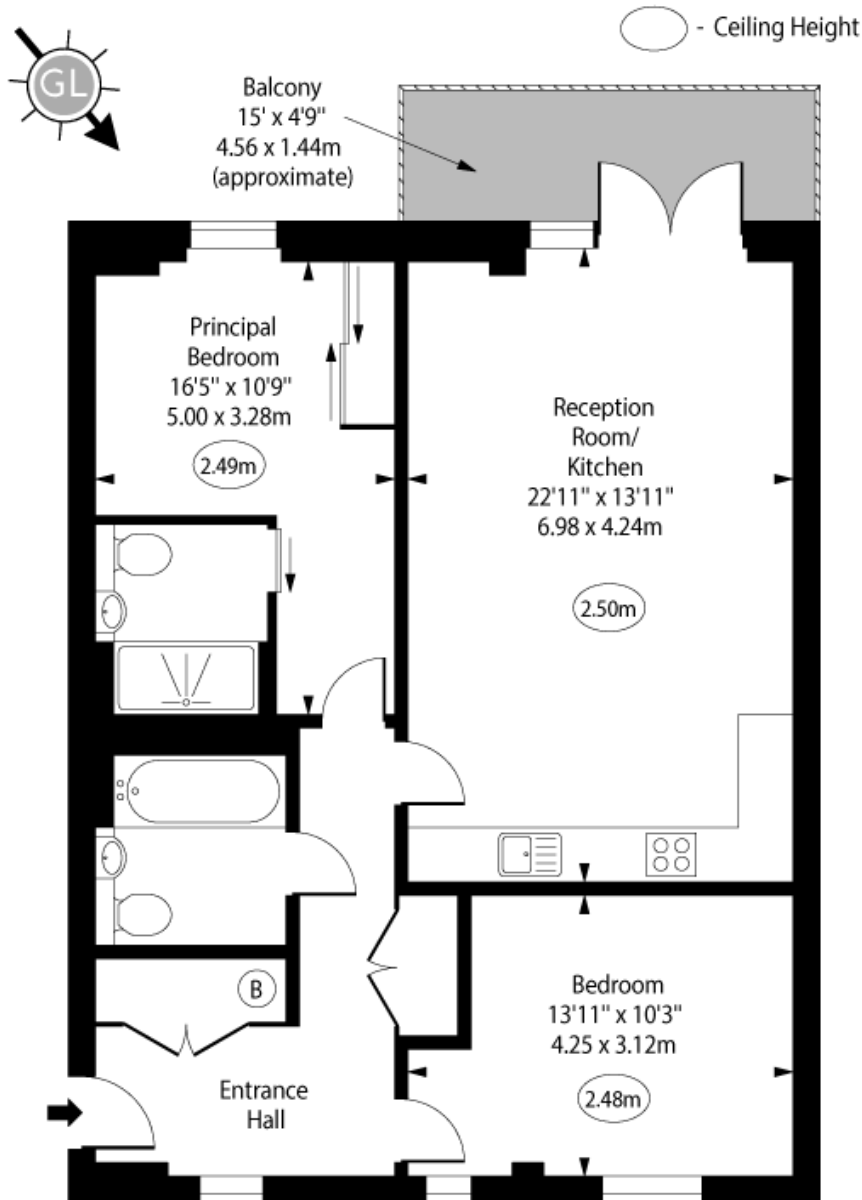
N1 2XQ

islington@chestertons.co.uk

020 7359 9777

chestertons.co.uk

Highfield Court, New North Road, N1



Third Floor

Approx Gross Internal Area 842 Sq Ft - 78.22 Sq M

Every attempt has been made to ensure the accuracy of the floor plan shown. However, all measurements, fixtures, fittings, and data shown are approximate interpretations and for illustrative purposes only. Measured according to the RICS. Not To Scale.

www.goldlens.co.uk

Ref. No. 028823J

