



Bromfield Street

Angel, N1

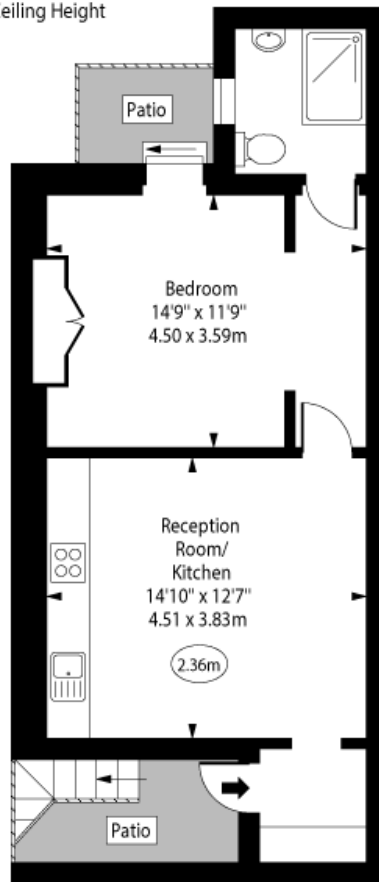
Guide Price £400,000

Nestled in the heart of Angel, this stunning one-bedroom apartment in a Grade II listed property provides a perfect home, pied-a-terre or investment property. This beautifully presented one-bedroom apartment offers 452 square feet of well-planned living space. Enjoy the privacy of your own entrance leading into a generous 14'10 x 12'7 reception room, ideal for relaxing or entertaining. The 14'9 x 11'9 bedroom features built-in storage, maximizing space and functionality. A highlight of the home is the private patio, providing a peaceful outdoor retreat rarely found in properties of this size. With its thoughtful layout and excellent location, this apartment offers a superb blend of comfort, convenience, and character.

CHESTERTONS

Bromfield Street,
Islington, N1

○ - Ceiling Height



Lower Ground Floor

Approx Gross Internal Area 452 Sq Ft - 41.99 Sq M

For Illustration Purposes Only - Not To Scale
www.goldlens.co.uk
Ref. No. 028545CH

Tenure: Leasehold 988 years 4 months

Service Charge: £864 pa building insurance.

Ground Rent: £0

Local Authority: Islington

Council Tax Band: D

Score	Energy rating	Current	Potential
92+	A		
81-91	B		
69-80	C	69 C	77 C
55-68	D		
39-54	E		
21-38	F		
1-20	G		

Chestertons Islington Sales

327-329 Upper Street

Islington

London

N1 2XQ

islington@chestertons.co.uk

020 7359 9777

Chesterton UK Services Limited trading as Chestertons for themselves and for the vendor of this property whose agents they are, give notice that (i) these particulars do not constitute any part of an offer or contract, (ii) all statements contained within these particulars are made without responsibility on the part of Chestertons or the vendor, (iii) whilst made in good faith, none of the statements contained within these particulars are to be relied upon as a statement or representation of fact, (iv) any intending purchasers must satisfy themselves by inspection or otherwise as to the correctness of each of the statements contained within these particulars, (v) the vendor does not make or give either Chestertons or any person in their employment any authority to make or give representation or warranty whatsoever in relation to this property. Wide angle lenses may be used. ©Copyright Chestertons | Chesterton UK Services Limited | Registered Office 40 Connaught Street, Hyde Park, London W2 2AB Registered Company Number 05334580.



This paper is
100% recyclable