



# City Road

Islington, EC1Y

Asking Price £775,000

A stunning 2 bed flat with contemporary interiors and brightly lit with floor to ceiling windows throughout. An exquisite reception leads onto a private balcony with fantastic views.



# City Road

## Islington, EC1Y

- Spacious 9th floor apartment
- 2 double bedrooms
- 2 bathrooms
- Stones throw from Old Street station
- 24 Hour Concierge
- Secure parking space



A stunning 2 bed flat with contemporary interiors and brightly lit with floor to ceiling windows throughout. An exquisite reception leads onto a private balcony with fantastic views.

This home comprises, a welcoming entrance hall, large and bright reception room with floor to ceiling windows and jaw dropping views across Bunhill Fields and The City, a modern integrated kitchen, family shower room, 2 double bedrooms with built in storage and the principal bedroom has an ensuite bathroom. this property comes with an secure underground parking space.

The Lexington is conveniently located between Moorgate and Old Street and features a 24-hour concierge, residents' gym, bike storage and landscaped communal gardens. It features a brand new reception with spectacular aquarium and recently updated lifts. Set in a prime location overlooking Bunhill Fields, the property is surrounded by vibrant bars and restaurants in the area. Old Street Station is moments away, with numerous transportation links providing direct access to Central London.

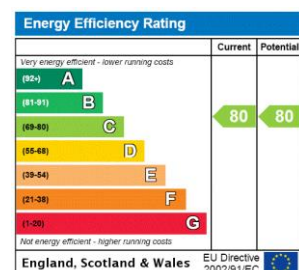
**Tenure:** Leasehold 971 years 7 months

**Service Charge:** £6500

**Ground Rent:** £0

**Local Authority:** Islington Council

**Council Tax Band:** H



### *Chestertons Islington Sales*

327-329 Upper Street

Islington

London

N1 2XQ

islington@chestertons.co.uk

020 7359 9777

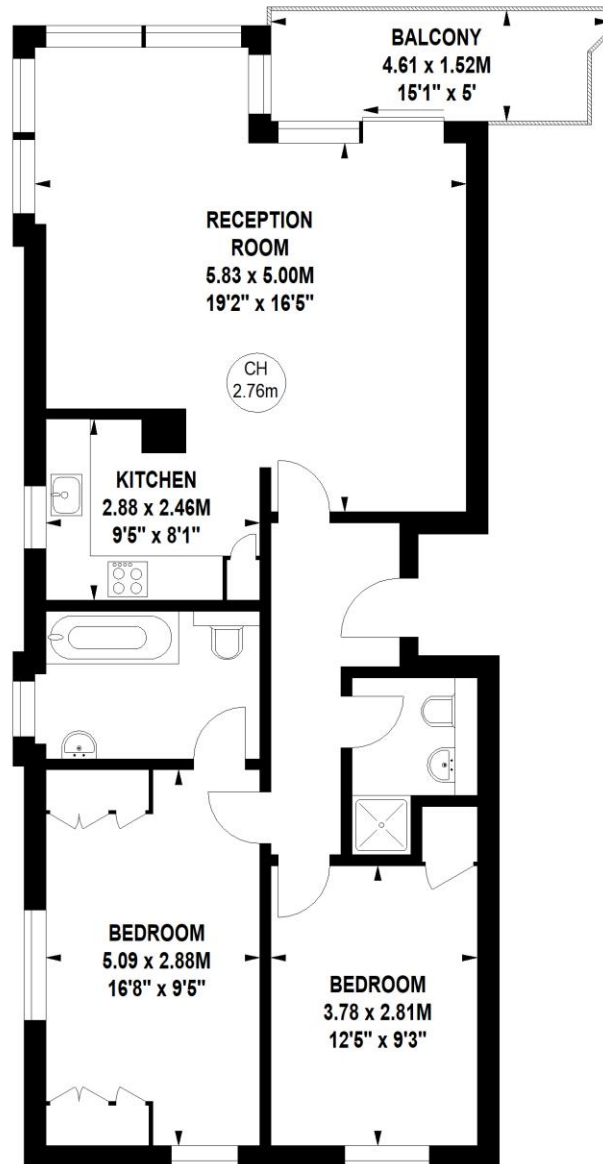
chestertons.co.uk

**Lexington Apartments,  
City Road,  
Clerkenwell, EC1Y**

Approximate gross internal area

**80.45 sq m / 866 sq ft**

Key :  
CH - Ceiling Height



**Ninth Floor**

**Not to scale, for guidance only and must not be relied upon as a statement of fact.  
All measurements and areas are approximate only**

