



Aubert Park

Highbury, N5

Guide Price £2,350,000

An imposing and substantial semi-detached early Victorian villa, offering fabulous proportions and retaining a wealth of ornate period details and benefitting from a south facing garden.



Aubert Park

Highbury, N5

- Semi detached
- Substantial (c. 2,990 sqft) Victorian villa
- Self contained one bedroom apartment
- South facing rear garden
- Ornate period details throughout
- Moments from Highbury Barn



An imposing and substantial semi-detached early Victorian villa, offering fabulous proportions and retaining a wealth of ornate period details and benefitting from a south facing garden. The property features a separately accessed one bedroom apartment. The main accommodation comprises a grand entrance hallway, complete with restored original coving, leading to the jaw dropping reception space, also retaining ornate coving and an original fireplace, with a large stained glass sash window flooding the space in natural light. The kitchen/dining space is housed at the rear of the space, with two beautiful French doors providing access to a wrought iron terrace which leads to the easily managed south facing rear garden. The one bedroom apartment spans the whole lower level; ideal for a granny annex, additional space for visiting family, or a useful source of income. The property could also easily be unified as the original stairs are still in place. There are two large double bedrooms on the first floor, with the principal housed at the rear, featuring an en-suite bathroom with a stunning view of gardens stretching for hundreds of yards. The larger bedroom is set at the front of the first floor, sun soaked courtesy of the two large sash windows and also looking out onto green space. It should be noted there is also a second W.C on this level. There are two double bedrooms on the top floor, along with a family bathroom suite. There is a huge amount of insulated eaves storage, spanning the roof line of the house. Aubert Park provides convenient access to Drayton Park and Highbury & Islington (Overground and Victoria), as well as Arsenal Underground station which sits on the Piccadilly Line linking through to the West End and North to Finsbury Park, along with the greenery of Highbury Fields and the renowned shops of Highbury Barn, such as La Fromagerie, and high class butchers & fishmongers.

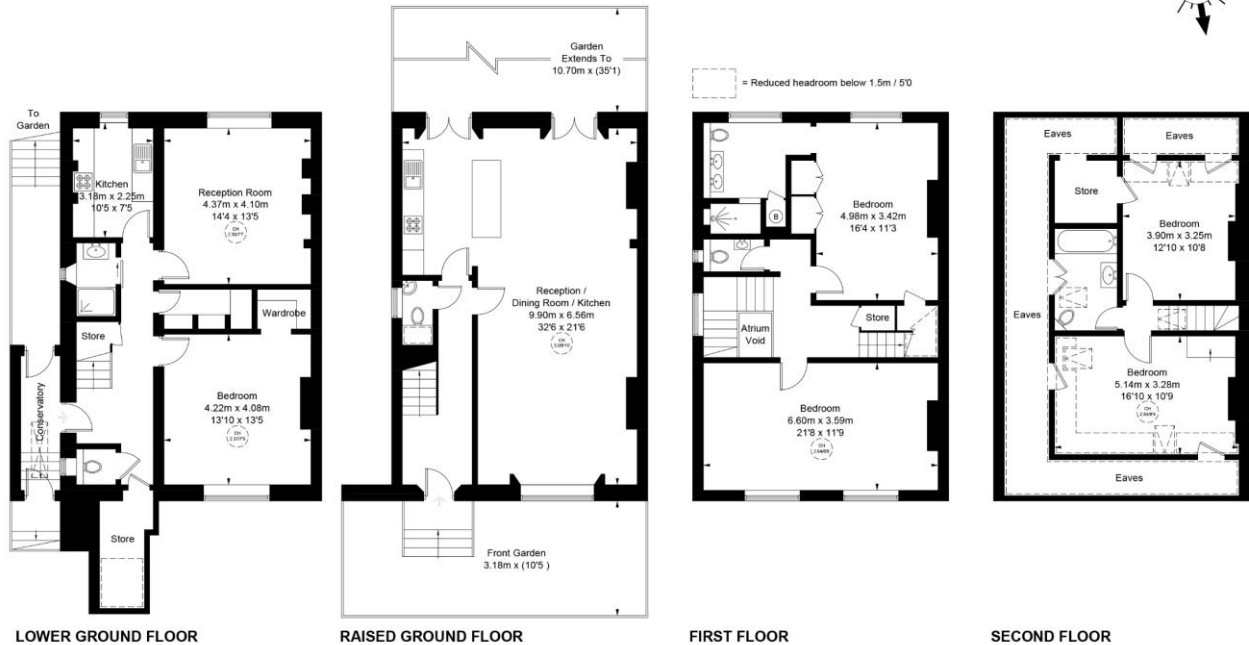
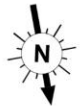
Tenure: Freehold
Local Authority: Islington
Council Tax Band G

Energy Efficiency Rating		
	Current	Potential
Very energy efficient - lower running costs		
A (92-100)		
B (81-91)		
C (69-80)		
D (55-68)	60	67
E (39-54)		
F (21-38)		
G (1-20)		
Not energy efficient - higher running costs		
England, Scotland & Wales		EU Directive 2002/91/EC

Chestertons Islington Sales

327-329 Upper Street
 Islington
 London
 N1 2XQ
 islington@chestertons.co.uk
 020 7359 9777
 chestertons.co.uk

AUBERT PARK, N5



THIS PLAN IS FOR LAYOUT GUIDANCE ONLY. NOT DRAWN TO SCALE UNLESS STATED. WINDOWS AND DOOR OPENINGS ARE APPROXIMATE. WHILST EVERY CARE IS TAKEN IN THE PREPARATION OF THIS PLAN, PLEASE CHECK ALL DIMENSIONS, SHAPES AND COMPASS BEARINGS BEFORE MAKING ANY DECISIONS RELIANT UPON THEM. (ID1055303)

