



Upper Street

Islington, N1

Asking Price £700,000

A bright and spacious 2 double bedroom, 2 bathroom apartment located on the second floor of a charming Victorian building occupying a prominent position on vibrant Upper Street.



Upper Street

Islington, N1

- A beautifully presented 2 double bedroom second floor flat
- Fabulous access to the trains at Highbury & Islington station, along with the amenities of Highbury Fields & Upper Street.
- The property sits within the desired Upper Street conservation area.



A bright and spacious 2 double bedroom, 2 bathroom apartment located on the second floor of a charming Victorian building occupying a prominent position on vibrant Upper Street. The property is modern and well-proportioned comprising; open-plan kitchen/living space flooded with light from the two sash-windows creating a lovely roomy feel to the space; the two bedrooms are both of a comfortable size with the master bedroom benefitting from built-in wardrobes and a contemporary en-suite shower room; the master bathroom is luxurious with a bath and overhead shower. The property sits within the desired Upper Street conservation area and affords superb proximity to all that Upper Street has to offer, including independent boutiques, restaurants, patisseries, salons, delis, a post office, the most fabulous hardware shop, and the Almeida theatre. The greenery and amenities (including gym, swimming pool and outdoor tennis courts) of Highbury Fields are just a few minutes away, and the gastronomic delights of Trullo and Prawn on the Lawn can be found nearby on St Paul's Road. Transport links are exceptional: Highbury and Islington station as well as Angel Station and buses provide regular access to Central and East London.

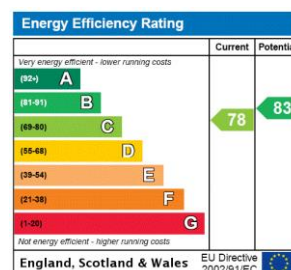
Tenure: Leasehold 999 years

Service Charge: £1900 The property will be sold with a new lease, this is an estimate of the new service charge.

Ground Rent: £0

Local Authority: Islington Council

Council Tax Band: D



Chestertons Islington Sales

327-329 Upper Street

Islington

London

N1 2XQ

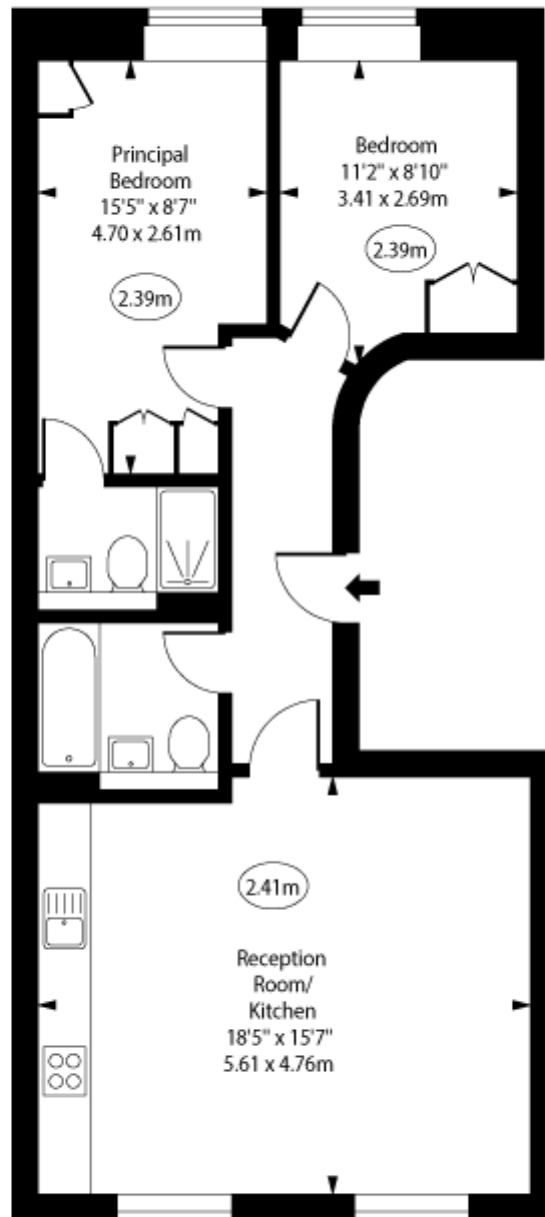
islington@chestertons.co.uk

020 7359 9777

chestertons.co.uk

Upper Street,
Islington, N1

○ - Ceiling Height



Second Floor

Approx Gross Internal Area 653 Sq Ft - 60.66 Sq M

For Illustration Purposes Only - Not To Scale

www.goldlens.co.uk

Ref. No. 027364R

