



# Thornhill Crescent

Barnsbury, N1

Asking Price £950,000

A stunning two double bedroom upper maisonette with accommodation arranged over the top two floors of this elegant Grade II listed Georgian mid terraced house set within the Barnsbury conservation area and with views of the church in the crescent.

CHESTERTONS





# Thornhill Crescent

## Barnsbury, N1

- Two double bedroom upper maisonette
- Grade II listed Georgian conversion
- Overlooking the church of Thornhill Crescent
- Principal bedroom with en-suite shower room
- Main bathroom with separate shower
- Set within the Barnsbury conservation area





A stunning two double bedroom upper maisonette with accommodation arranged over the top two floors of this elegant Grade II listed Georgian mid terraced house, set within the Barnsbury conservation area. Accommodation comprises open-plan kitchen/ reception room on the second floor with two sash windows affording wonderful views on to the church & gardens of Thornhill Crescent. To the rear is the bedroom complete with en-suite shower room. The top (third) floor is home to the larger of the two bedrooms along with the main bathroom complete with bath and separate walk-in shower. Situated within this charming Georgian terrace, directly overlooking the picturesque church and gardens of Thornhill Crescent, the property is conveniently located for access to the transport hub & destination location that is Kings Cross & St Pancras International, with its array of public spaces, boutique shops and eateries with offerings from around the world. The bus routes of Caledonian Road are close by, as are the many vibrant amenities of Upper Street. The property has been finished to a very high standard utilising high quality fittings.

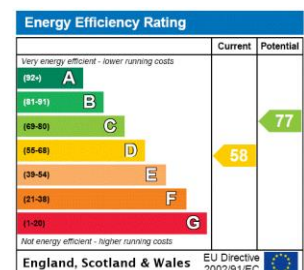
**Tenure:** Leasehold 88 years 8 months

**Service Charge:** £2,072 per annum

**Ground Rent:** £10

**Local Authority:** Islington

**Council Tax Band:** D



**Chestertons Islington Sales**

327-329 Upper Street

Islington

London

N1 2XQ

islington@chestertons.co.uk

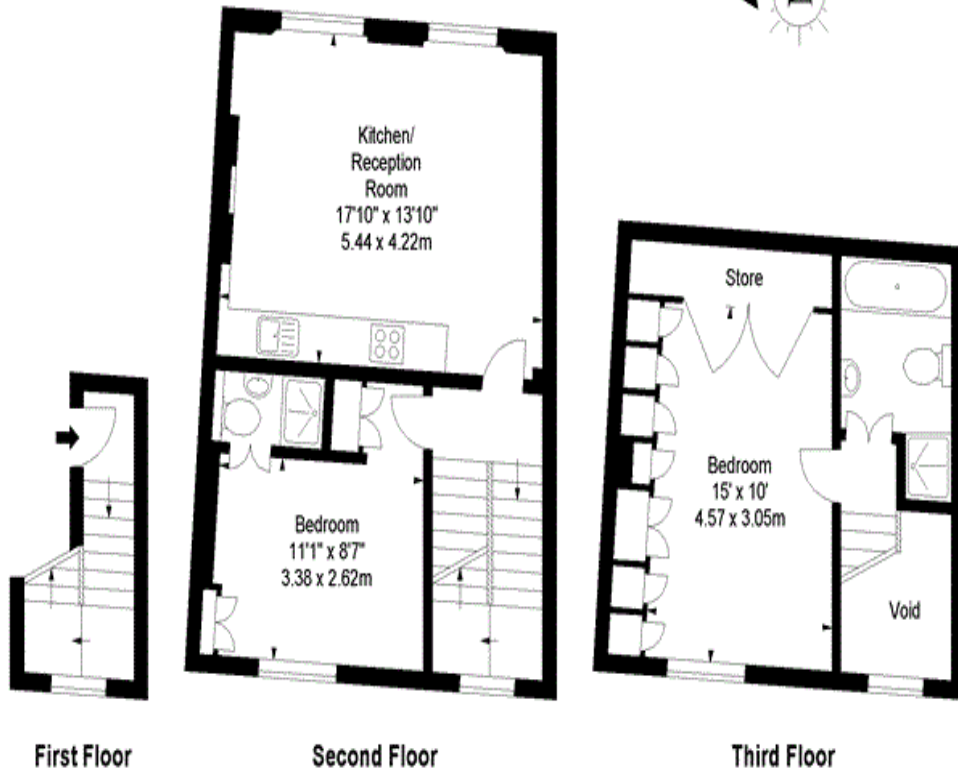
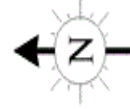
020 7359 9777

chestertons.co.uk

# Thornhill Crescent, N1

Approx. Gross Internal Area \*

795 Ft<sup>2</sup> - 73.86 M<sup>2</sup>



Every attempt has been made to ensure the accuracy of this floor plan however, measurements are approximate and for illustration purposes only. Measured in accordance with the RICS code of measuring practice. Not to scale

© Inside Photography Ltd.

Tel 07860 620 122 , 0207 263 2188

[www.ipinteriors.co.uk](http://www.ipinteriors.co.uk)

