



# Lanesborough Court

Chillingworth Road, N7

Asking Price £570,000

A spacious 2 double bedroom apartment set on the first floor of this private small modern development, situated towards the Northern end of Liverpool Road, close to the junction with Holloway Road.





# Lanesborough Court

## Chillingworth Road, N7

- Spacious 2 double bedroom first floor apartment
- Master bedroom with en-suite shower room
- Balcony accessed via the good size open-plan kitchen/ reception
- Conveniently located for access to a number of transport options





A spacious 2 double bedroom apartment set on the first floor of this private small modern development, situated towards the Northern end of Liverpool Road, close to the junction with Holloway Road. Accommodation comprises 2 double bedrooms (master with en-suite shower room), tiled bathroom and a fantastic size open-plan kitchen/ reception room with access to the balcony space.

The property is conveniently located for access to the amenities of Holloway Road, the greenery of Paradise Park and the transport at Highbury & Islington station (National Rail & Victoria Line) and Holloway Road (Piccadilly Line).

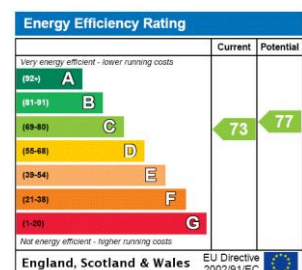
**Tenure:** Leasehold 103 years 3 months

**Service Charge:** £2024.7

**Ground Rent:** £250

**Local Authority:** Islington

**Council Tax Band:** E



### *Chestertons Islington Sales*

327-329 Upper Street

Islington

London

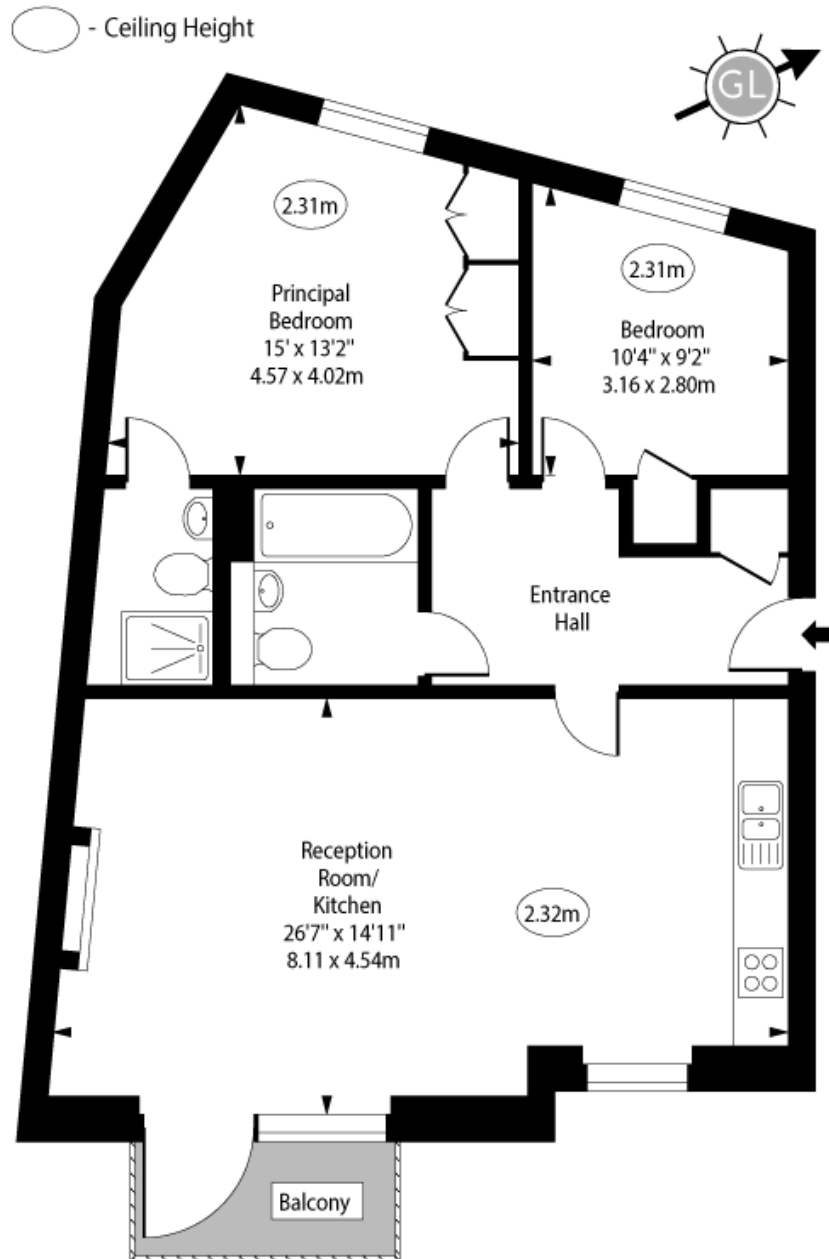
N1 2XQ

islington@chestertons.co.uk

020 7359 9777

chestertons.co.uk

Lanesborough Court,  
Chillingworth Road, N7



First Floor

Approx Gross Internal Area 815 Sq Ft - 75.71 Sq M

For Illustration Purposes Only - Not To Scale

[www.goldlens.co.uk](http://www.goldlens.co.uk)

Ref. No. 027211R

