



# Avebury Court

Colville Estate, N1

Asking Price £500,000

A bright and spacious 2 double bedroom apartment located on the top floor of a small local authority purpose built development with spectacular views across Shoreditch park and the London skyline.



# Avebury Court

## Colville Estate, N1

- 2 double bedrooms
- Top floor
- Lift access
- Impressive views across London
- Moments from Shoreditch Park and the Regent's canal



A bright and spacious 2 double bedroom apartment located on the top floor of a small local authority purpose built development with spectacular views across Shoreditch park and the London skyline. The property is well-proportioned with functional living space comprising; two double bedroom both with impressive views across London; spacious kitchen with plenty of cupboard and worktop space; bathroom with bath and overhead shower. Located moments from the Regent's canal and set to the rear of the development with tremendous views across London, this apartment in Avebury Court is conveniently located for access to Hoxton and Shoreditch with an array of trendy bars, restaurants, galleries and boutique shops. Old Street Underground (Northern Line), Haggerston (London overground) and Essex Road (National Rail) are the closest stations. The bus routes of Southgate Road and New North Road provide good links to the City.

---

**Tenure:** Leasehold 85 years 10 months

**Service Charge:** £1997.65

**Ground Rent:** £9

**Local Authority:** London Borough Of Hackney (Council Tax)

**Council Tax Band:** B

---

### *Chestertons Islington Sales*

327-329 Upper Street

Islington

London

N1 2XQ

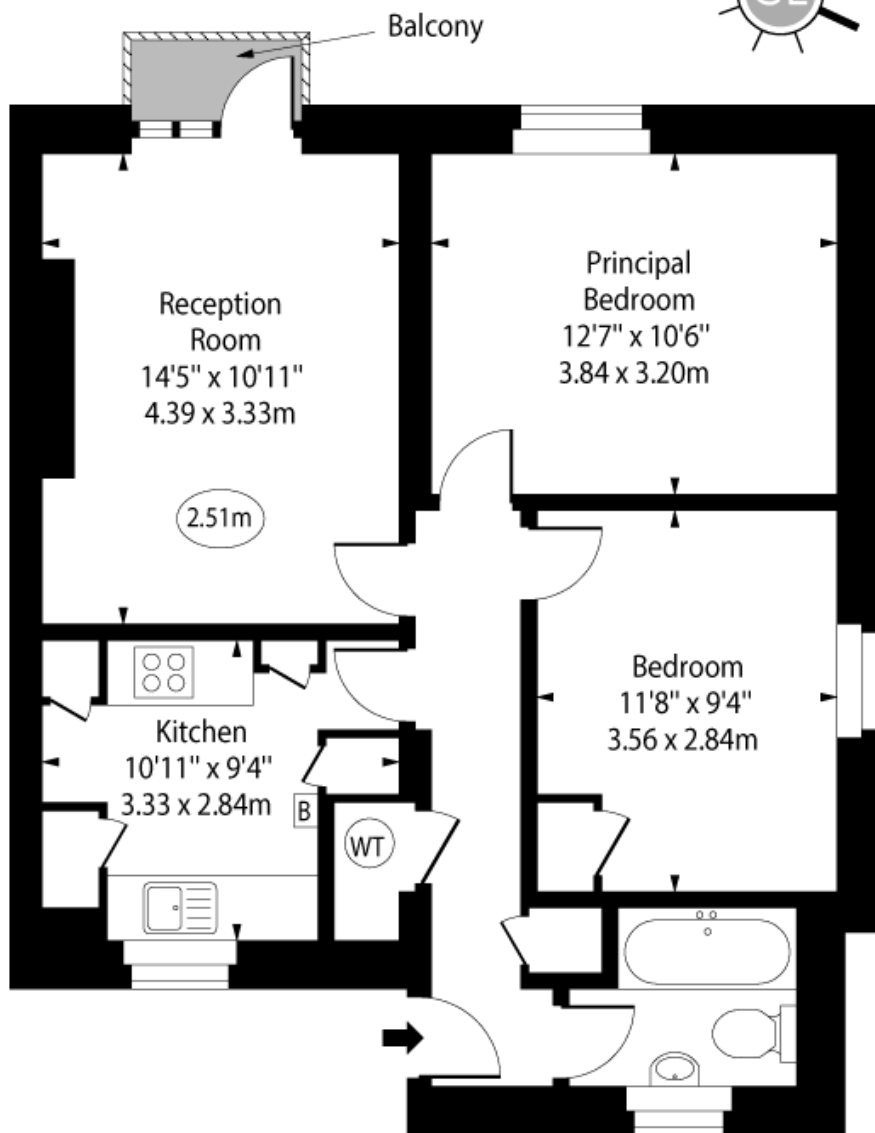
islington@chestertons.co.uk

020 7359 9777

[chestertons.co.uk](https://www.chestertons.co.uk)

# Avebury Court, Colville Estate, N1

○ - Ceiling Height



Third Floor

Approx Gross Internal Area      646 Sq Ft - 60.01 Sq M

For Illustration Purposes Only - Not To Scale

[www.goldlens.co.uk](http://www.goldlens.co.uk)

Ref. No. 027051K

