



Rodin Court

Essex Road, N1

Asking Price £900,000

A bright and spacious 2 double bedroom apartment set on the the 2nd floor of an extremely highly regarded modern development nestled neatly in the very heart of Islington, moments from Islington Green.



Rodin Court

Essex Road, N1

- Spacious 2 double bedroom apartment
- 2 bathrooms
- 30ft reception/ dining room
- Separate kitchen
- Lift access
- 24 hour concierge
- Landscaped communal garden
- Superb access to Angel station (Northern Line)



A bright and spacious 2 double bedroom apartment set on the the 2nd floor of an extremely highly regarded modern development nestled neatly in the very heart of Islington, moments from Islington Green. Accommodation comprises master bedroom with built-in wardrobes and spacious en-suite bathroom, double second bedroom also with built-in wardrobes, 30ft reception/dining room with a separate fitted kitchen and a cleverly designed family bathroom with bath and separate walk-in shower. Rodin Court forms part of the Angel On The Green development, built by the locally renowned Grove Manor Homes, with the centre piece being a landscaped communal garden, offering peace and tranquillity in the heart of the hustle and bustle of an otherwise vibrant and buzzing location, with the benefit of a 24 hour concierge and CCTV. The bars, restaurants and shops of Upper Street are almost literally on your door step, with the transport at Angel Underground offering good links to the City and West End, along with both National Rail and the Underground at Highbury & Islington and National Rail at Essex Road station.

****It should be noted that there is a secure courtyard parking space available by separate negotiation.**

Tenure: Leasehold 971 years 3 months

Service Charge: £5961.25

Ground Rent: £250

Local Authority: Islington Council

Council Tax Band: G

Chestertons Islington Sales

327-329 Upper Street

Islington

London

N1 2XQ

islington@chestertons.co.uk

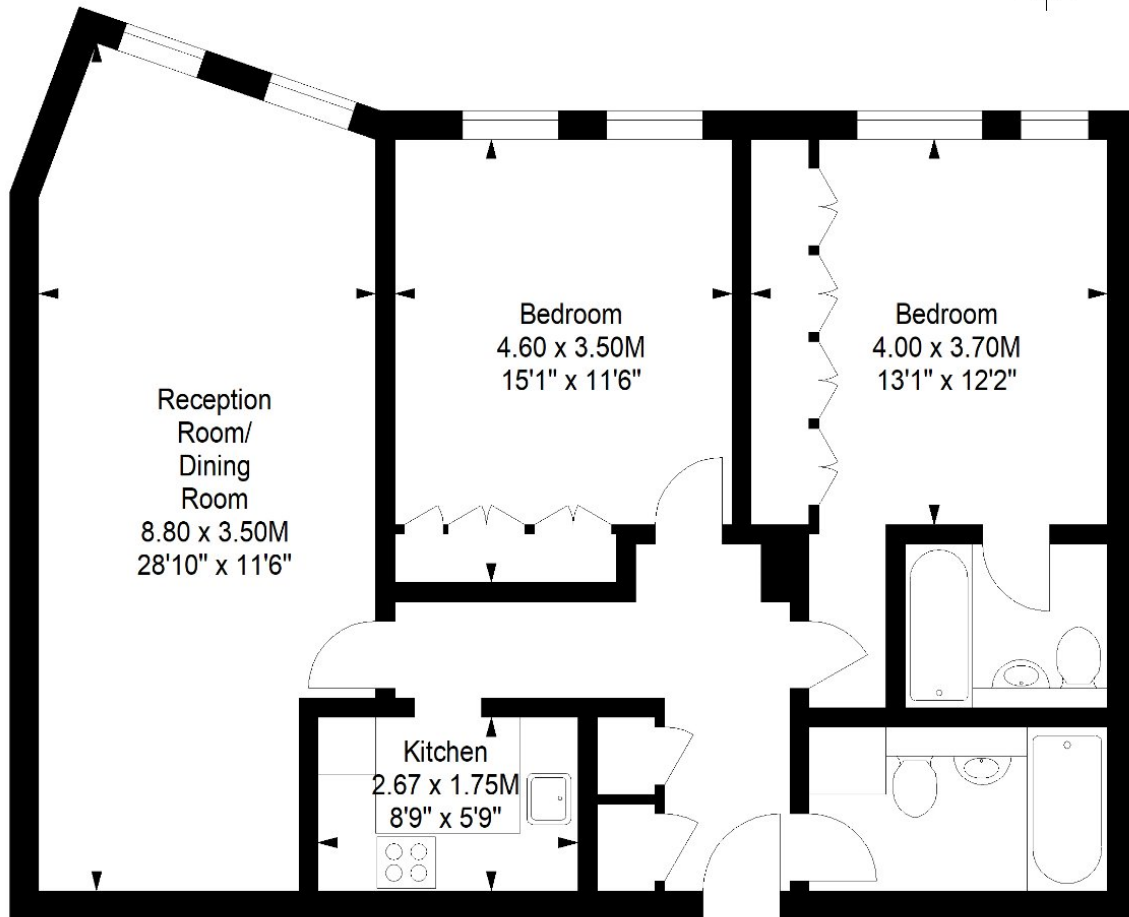
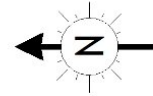
020 7359 9777

chestertons.co.uk

Rodin Court, N1

Approximate gross internal area

88.16 sq m / 949 sq ft



Third Floor

Every attempt has been made to ensure the accuracy of this floor plan
however, measurements are approximate and for illustration purposes only.
Measured in accordance with the RICS code of measuring practice. Not to scale
www.lpaplus.com