



# Albany Mews

Islington, N1

Asking Price £700,000

Set in a private, quiet mews off a tree-lined one way street in central Barnsbury is this spacious 2 double bedroom ground floor apartment with private walled-garden and dedicated parking space.



# Albany Mews

## Islington, N1

- 2 double bedrooms
- Quiet small private mews
- Central Barnsbury
- Conservation area
- Off-street dedicated parking
- Private secluded patio garden
- Good transport links





Set in a private, quiet mews in central Barnsbury is this spacious 2 double bedroom ground floor apartment with private garden and dedicated parking space. The property comprises; large bright entrance hallway leading to both double bedrooms with built in storage, the master bedroom overlooks the mature low-maintenance garden; the kitchen with bespoke cabinetry overlooks the front courtyard and is semi-open to the living area; the spacious living room is flooded with light from the wooden French doors and leads onto the secluded walled private garden. Albany Mews is accessed from a quiet tree-lined one way street, Barnsbury Park, which can only be accessed from Thornhill Road. Barnsbury Park affords superb access to the trains at Caledonian Road Underground station (Piccadilly Line), Caledonian Road & Barnsbury station (London Overground Network), along with Highbury & Islington station (National Rail & Victoria Line) & Angel (Northern Line). The house is also conveniently located for access to the greenery of numerous local squares including Barnsbury Square and Thornhill Square, to name but 2, along with the delights of Barnsbury Wood. Kings Cross / St Pancras International provide superb additional transport links around London and to mainland Europe, along with a vibrant night life with a plethora of bars and restaurants.

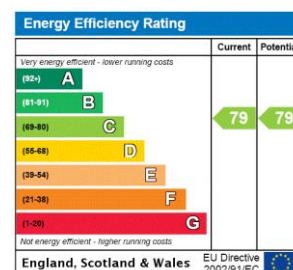
**Tenure:** Leasehold 93 years 10 months

**Service Charge:** £2600

**Ground Rent:** £250

**Local Authority:** Islington Council

**Council Tax Band:** D



### *Chestertons Islington Sales*

327-329 Upper Street

Islington

London

N1 2XQ

islington@chestertons.co.uk

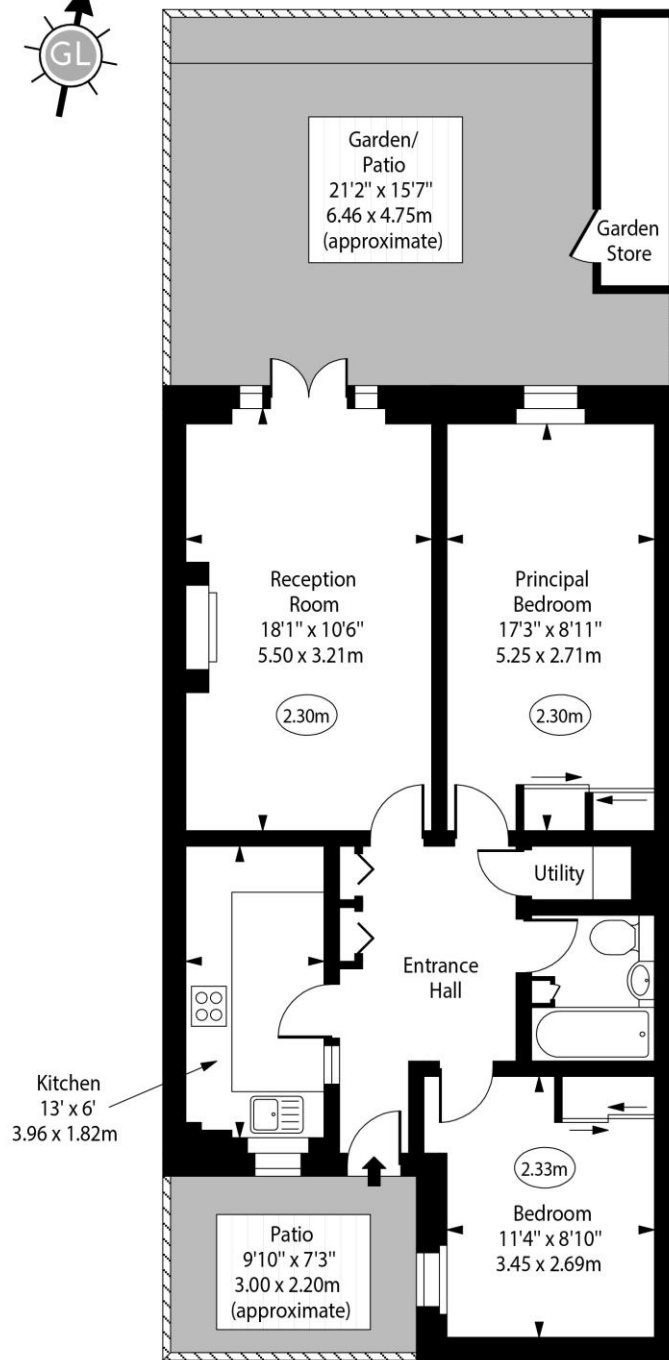
020 7359 9777

chestertons.co.uk

# Albany Mews, N1



○ - Ceiling Height



Ground Floor

Approx Gross Internal Area 690 Sq Ft - 64.10 Sq M

For Illustration Purposes Only - Not To Scale

[www.goldlens.co.uk](http://www.goldlens.co.uk)

Ref. No. 020109R

