



Adolphus Road

Finsbury Park, N4

Asking Price £750,000

A spacious 3 double bedroom garden flat with accommodation extending to 1,142 sq ft and set across the lower ground floor of this imposing Victorian villa with the benefit of a fabulous 37ft private garden.



Adolphus Road

Finsbury Park, N4

- 3 double bedrooms
- In excess of 1,100sq ft of lateral accommodation
- Impressive private 37 foot garden
- Well-presented
- Situated on a peaceful residential street moments from Finsbury Park



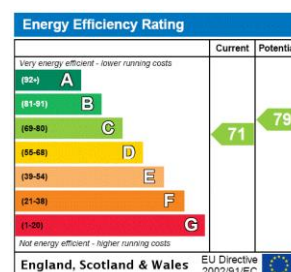
A spacious 3 double bedroom garden flat with accommodation extending to 1,142 sq ft and set across the lower ground floor of this imposing Victorian villa with the benefit of a fabulous 37ft private garden. The property is well-presented having recently been refurbished by the current owners and comprises; master bedroom to the rear of the property with doors leading to the garden; a further additional two double bedrooms; modern master bathroom with bath and over-head shower; a separate additional WC; Large semi open-plan living/kitchen room located to the front of the property with a modern galley kitchen with plenty of worktop and cupboard space leading on to the impressive 37 foot private garden. Adolphus Road is a charming quiet residential turning nestled neatly between Seven Sisters Road and Green Lanes, providing superb access to the transport hub at Finsbury Park station, with national rail trains and two Underground lines (Victoria & Piccadilly). The property is also well located for access to the greenery of Finsbury Park and Clissold Park, the indoor climbing centre on Green Lanes, with the sailing club at the reservoir and the Woodberry Wetlands nature and wildlife reserve.

Tenure: Leasehold 998 years 11 months

Service Charge: The liability for this flat is 26% of the buildings outgoings

Local Authority: London Borough Of Hackney (Council Tax)

Council Tax Band: D



Chestertons Islington Sales

327-329 Upper Street

Islington

London

N1 2XQ

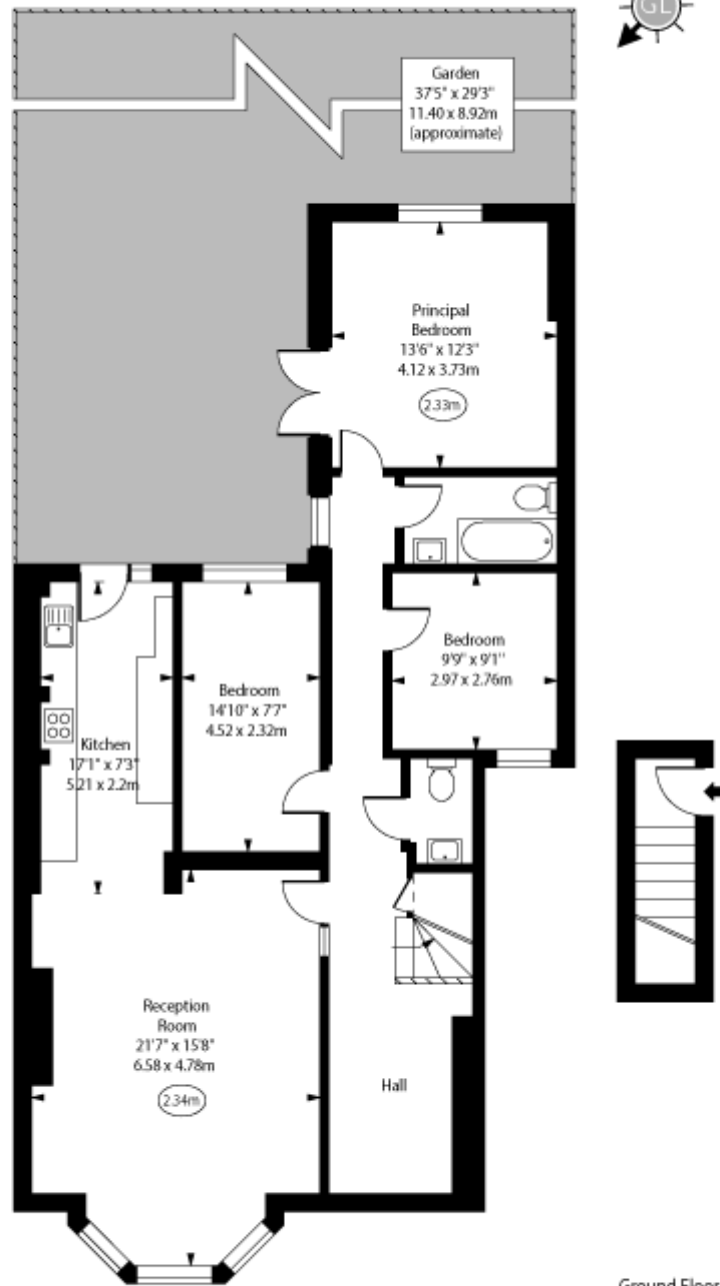
islington@chestertons.co.uk

020 7359 9777

chestertons.co.uk

Adolphus Road, N4

○ - Ceiling Height



Lower Ground Floor

Ground Floor
Entrance

Approx Gross Internal Area 1142 Sq Ft - 106.10 Sq M

For Illustration Purposes Only - Not To Scale
www.goldlens.co.uk
Ref. No. 024434J

