



Mildmay Avenue

Islington, N1

Asking Price £575,000

A bright and spacious 2 bedroom, 2 bathroom modern apartment located on the second floor of a private development located on a quiet no-through avenue.



Mildmay Avenue

Islington, N1

- 2 double bedrooms
- 2 bathrooms
- Open-plan living/kitchen space
- Quite no-through location
- Moments from Newington Green



A bright and spacious 2 bedroom, 2 bathroom modern apartment located on the second floor of a private development located on a quiet no-through road. The property is well-proportioned comprising; two large double bedrooms with the master benefiting from an en-suite shower-room; modern family bathroom with bath and overhead shower; spacious open-plan kitchen/dining/living space with a fabulous contemporary kitchen offering plenty of worktop and cupboard space. The property is exceptionally well placed for so much of what the area has to offer, with the buzz of Upper Street with its vibrant bars, cafés and restaurants offering international cuisine only a short walk away, a plethora of cafes, restaurants and trendy bars found at Dalston and Kingsland Road to the East, Stoke Newington to the North and Newington Green around the corner, with the delightful greenery of Clissold Park just a short stroll away. Transport can be found at Highbury & Islington (Victoria Line & Overground), Dalston Junction (London Overground) & Canonbury Station (London Overground).

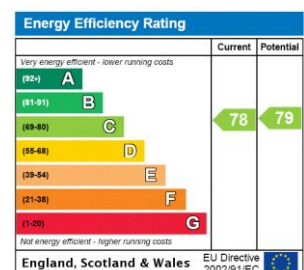
Tenure: Leasehold 111 years 9 months

Service Charge: £1800

Ground Rent: £450

Local Authority: Islington Council

Council Tax Band: E



Chestertons Islington Sales

327-329 Upper Street

Islington

London

N1 2XQ

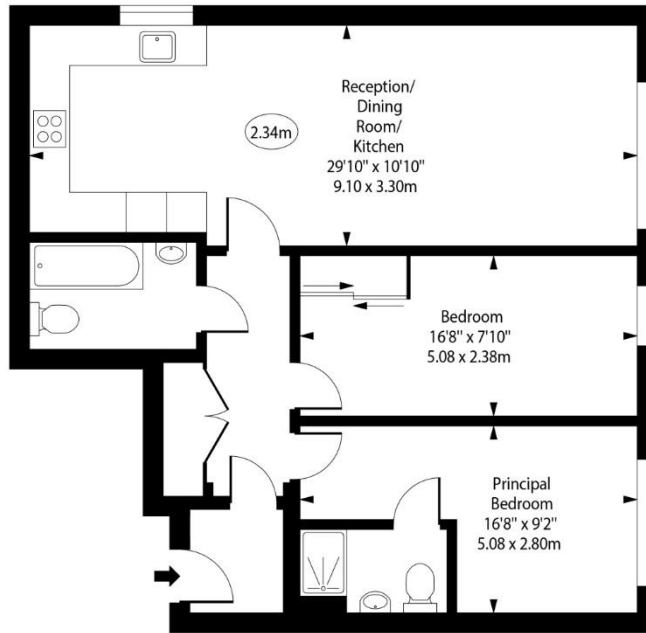
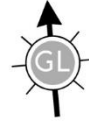
islington@chestertons.co.uk

020 7359 9777

chestertons.co.uk

Mildmay Avenue,
Islington, N1

○ - Ceiling Height



Second Floor

Approx Gross Internal Area 770 Sq Ft - 71.53 Sq M

For Illustration Purposes Only - Not To Scale
www.goldlens.co.uk
Ref. No. 0255661G

