



Myddelton Square

Islington, EC1R

Offers in excess of £725,000

This incredibly spacious two double bedroom apartment is situated on the third floor within this stunning period conversion on the highly renowned Myddelton Square located ideally for Angel station and easy access into The City & Central London.



Myddelton Square

Islington, EC1R

- Two Bedrooms
- One Bathroom
- Balcony
- Close to Angel Station
- Light and Bright



This incredibly spacious two double bedroom apartment is situated on the third floor within this stunning period conversion on the highly renowned Myddelton Square located ideally for Angel station and easy access into The City & Central London. The property is well-proportioned and comprises; spacious reception room, eat in kitchen, two double bedrooms and three piece bathroom suite. The property further benefits from a fantastic private balcony and well-maintained communal gardens. Myddelton Square is a wonderful tranquil setting set within the New River conservation area in amongst more vibrant surroundings, supremely well positioned for access to a plethora of amenities of Amwell Street, as well as Sadlers Wells Theatre, the renowned eateries and bars of Exmouth Market, Upper Street and Camden Passage. The City & the West End are both within walking distance. The nearest public transport links are Angel (Northern Line), Farringdon Station (London Underground Circle Line, Hammersmith & City Line and Metropolitan Line and National Rail services). Kings Cross/ St Pancras International is just 1 stop from Angel, with the Eurostar Terminus offering trains to mainland Europe.

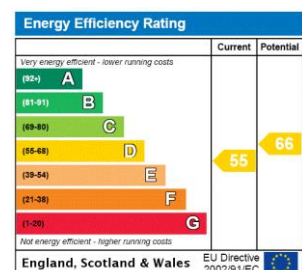
Tenure: Share of Freehold 117 years 4 months

Service Charge: £2994 Includes a contribution towards the sinking fund.

Ground Rent: £0

Local Authority: Islington Council

Council Tax Band: E



Chestertons Islington Sales

327-329 Upper Street

Islington

London

N1 2XQ

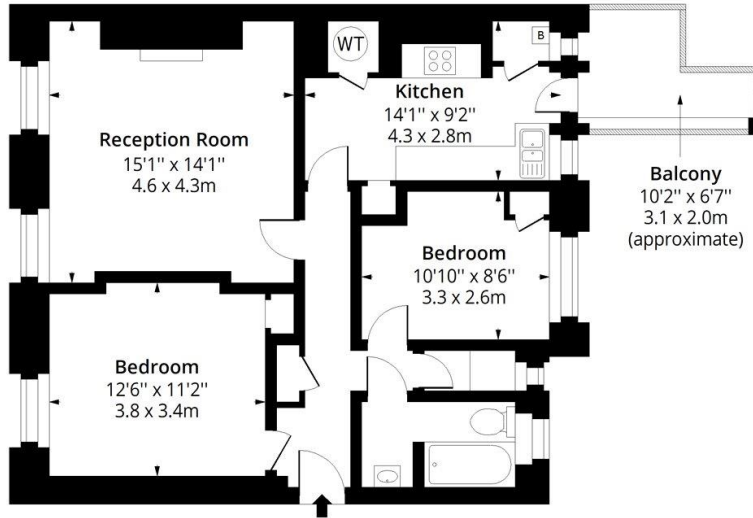
islington@chestertons.co.uk

020 7359 9777

chestertons.co.uk

Myddelton Square, EC1R

Approx. Gross Internal Area 740 Sq Ft - 68.75 Sq M
Approx. Gross Balcony Area 47 Sq Ft - 4.37 Sq M



Third Floor

Floor Area 740 Sq Ft - 68.75 Sq M



Measured according to RICS IPMS2. Floor plan is for illustrative purposes only and is not to scale. Every attempt has been made to ensure the accuracy of the floor plan shown, however all measurements, fixtures, fittings and data shown are an approximate interpretation for illustrative purposes only. 1 sq m = 10.76 sq feet.

lpaplus.com

Date: 26/8/2023

