



# Lodge Mews

Aberdeen Park, N5

Asking Price £1,500,000

A well-presented three double bedroom (+ study) end of terrace Freehold with allocated off street parking, peacefully set within a Mews located on a private street, well located for access to Highbury Fields.





# Lodge Mews

## Aberdeen Park, N5

- Three double bedrooms
- Study
- End of terrace
- Peaceful mews
- Allocated off street parking
- Beautifully presented
- Secluded rear garden
- Set on a private street moments from Highbury Fields





A well-presented three double bedroom (+ study) end of terrace Freehold with allocated off street parking, peacefully set within a Mews located on a private street, well located for access to Highbury Fields. Accommodation is immaculately presented and comprises; a large entrance hallway which leads to a W.C, utility space accessed off it, with the vast, kitchen/dining/reception space housed at the rear of the ground floor, sun soaked courtesy of the skylights and large French doors, which frame a serene, green and unobstructed outlook to the secluded rear garden. There is a large double bedroom at the rear of the first floor, which could be utilised as an additional reception space, along with a family bathroom suite and large study. There are two additional double bedrooms on the top floor as well as another family bathroom suite. It should be noted that the house further benefits from rarely found off street parking. Aberdeen Park is a delightful, peaceful and tree-lined residential turning, offering superb access to the focal point of the community at Highbury Barn with shops including Godfreys Butchers, La Fromagerie and Da'Mario Italian Delicatessen, along with being well located for access to the City & West End. The greenery and amenities of Highbury Fields can be found on the short walk to Highbury & Islington Station (National Rail, Overground and Victoria Line) with further transport at Arsenal (Piccadilly Line), Drayton Park (National Rail to Moorgate), Canonbury (Overground towards Canary Wharf) and buses to the City. Also nearby are the shops, bars, restaurants, theatres and cinemas of Islington's Upper Street.

---

**Tenure:** Freehold

**Local Authority:** Islington Council

**Ground Rent:** Band G

---

### *Chestertons Islington Sales*

327-329 Upper Street

Islington

London

N1 2XQ

[islington@chestertons.co.uk](mailto:islington@chestertons.co.uk)

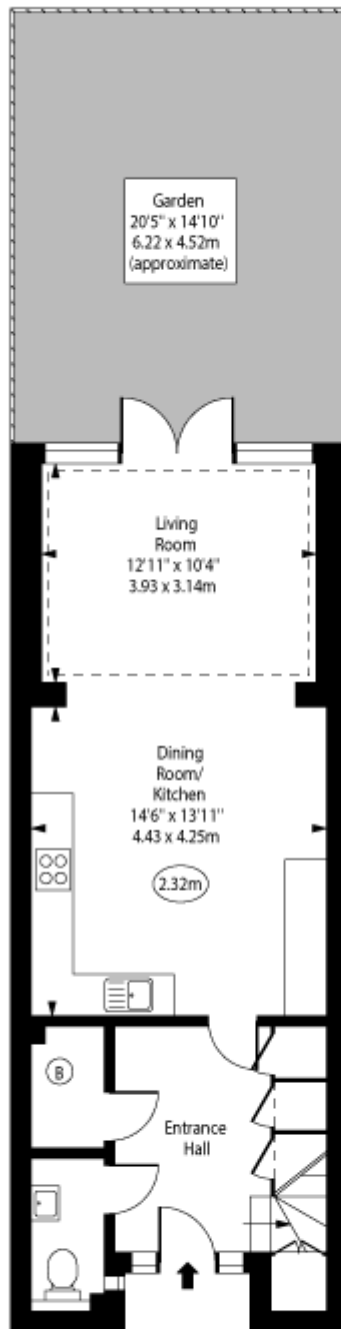
020 7359 9777

[chestertons.co.uk](https://www.chestertons.co.uk)

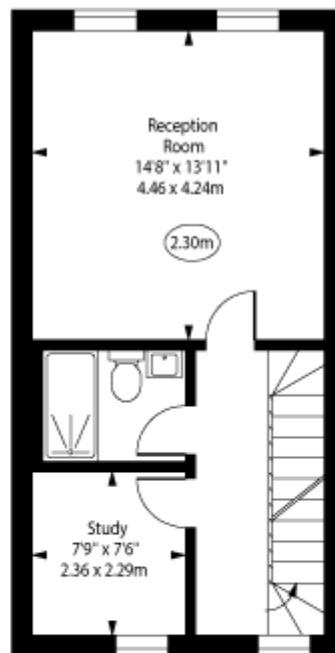
Lodge Mews,  
Aberdeen Park, N5



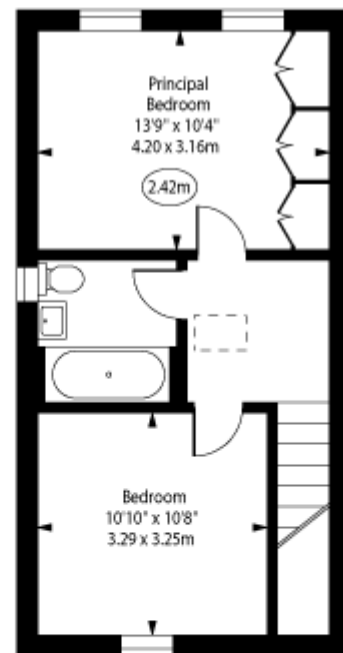
○ - Ceiling Height



Ground Floor



First Floor



Second Floor

Approx Gross Internal Area 1312 Sq Ft - 121.88 Sq M

For Illustration Purposes Only - Not To Scale  
www.goldlens.co.uk  
Ref. No. 024046J

