



# York House

Highbury Crescent, N5

Asking Price £675,000

A unique, fabulously spacious one bedroom apartment in a sought after mansion block across from Highbury Fields and moments from Highbury & Islington station and the amenities of Upper Street.





# York House

## Highbury Crescent, N5

- Unique spacious one bedroom apartment
- Modern kitchen
- Modern bathroom
- Solid parquet flooring
- Secure bike shed
- Highbury Fields location





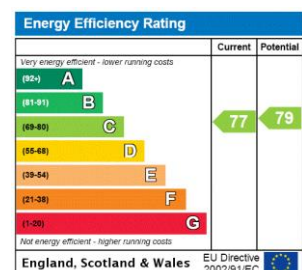
A unique, design-led spacious one bedroom apartment in a sought after mansion block across from Highbury Fields and moments from Highbury & Islington station and the amenities of Upper Street. The living space is stand out and benefits from 4 sash-windows giving a good amount of light. there is plenty of space for furniture and dining and is the ultimate place for entertaining; the kitchen is modern with plenty of storage and worktop space; furthermore there is reclaimed herringbone wood flooring which makes for an exceptional feature. The bathroom is modern and luxurious. The bedroom is tranquil, the perfect place to relax and benefits from build in wardrobes. There is access to a communal courtyard at the front of the building and communal garden to the rear. York House is supremely well placed for the greenery and amenities of Highbury Fields (gym, tennis courts, etc), the shops of Highbury Barn including the renowned Godfreys butchers, fishmongers and Da Marios delicatessen. Transport can be found locally at Highbury & Islington station (National Rail & Victoria Line), along with Arsenal Underground (Piccadilly Line) Canonbury Station (London Overground), with a number of bus routes running along Highbury Grove. The delights of Trullo & Prawn On The Lawn, by Highbury Corner, offer superb local dining.

**Tenure:** Share of Freehold 987 years eleven months

**Service Charge:** £2,659.14 per annum

**Local Authority:** Islington

**Council Tax Band:** E



### Chestertons Islington Sales

327-329 Upper Street

Islington

London

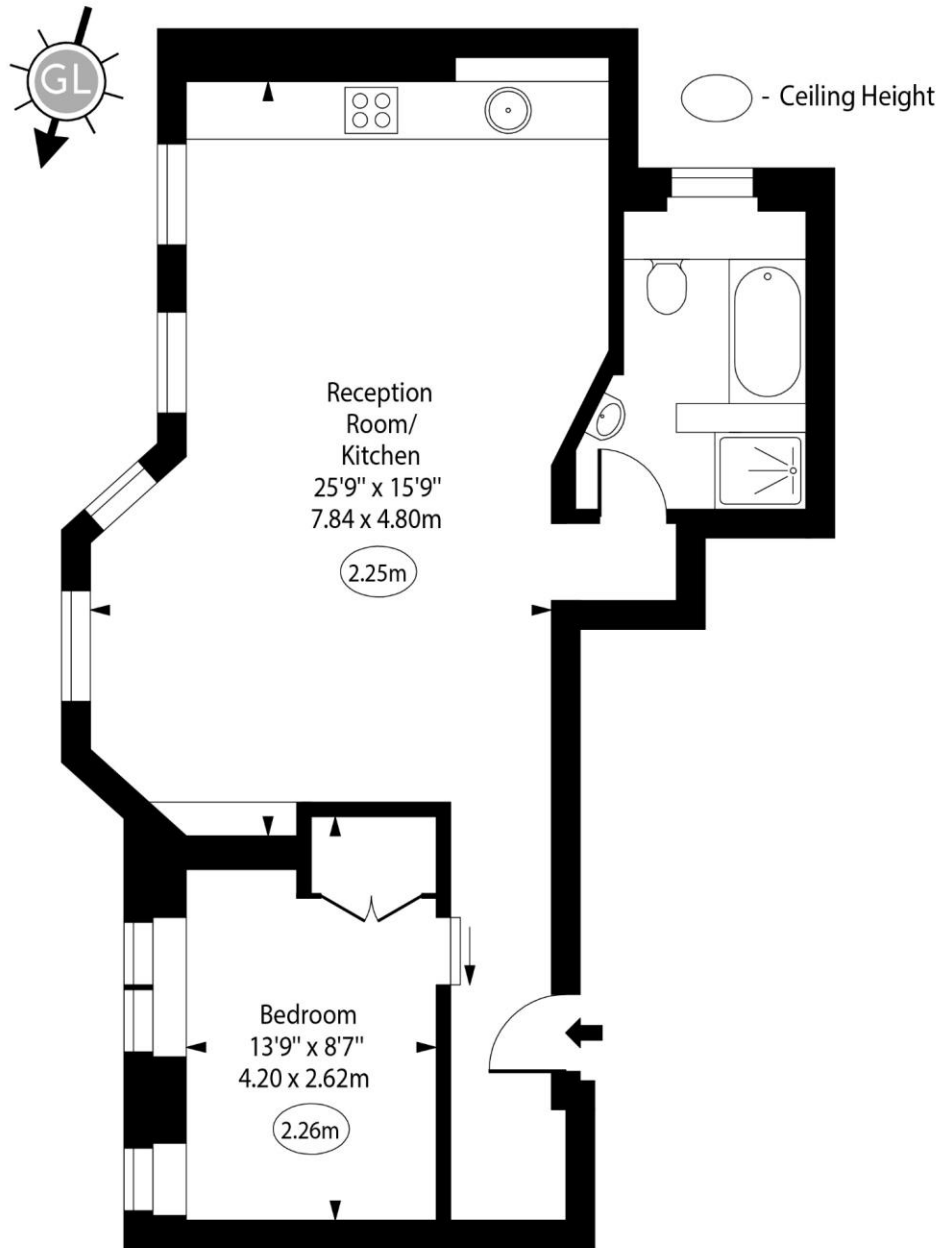
N1 2XQ

islington@chestertons.co.uk

020 7359 9777

chestertons.co.uk

# York House, Highbury Crescent, N5



Lower Ground Floor

Approx Gross Internal Area 636 Sq Ft - 59.08 Sq M

For Illustration Purposes Only - Not To Scale

[www.goldlens.co.uk](http://www.goldlens.co.uk)

Ref. No. 021684R

