

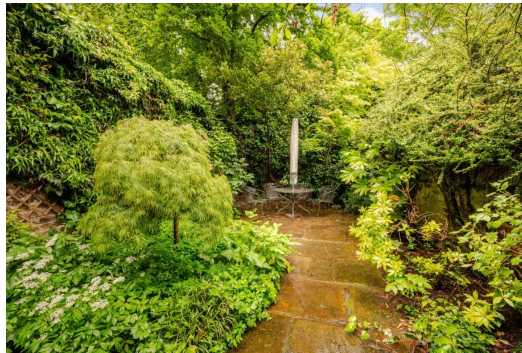


Barnsbury Street

Barnsbury, N1

Asking Price £2,500,000

A partially stucco fronted Grade II listed Freehold, constructed in c. 1830, set on one of Barnsbury's most prestigious addresses, only moments from the greenery of Lonsdale Square gardens.



Barnsbury Street

Barnsbury, N1

- Grade II listed
- Built in c. 1830
- Ornate details throughout
- Secluded rear garden
- Ideally located within the Barnsbury conservation area
- Easy access to Angel (Underground) and Upper Street



A partially stucco fronted Grade II listed Freehold, constructed in c. 1830, set on one of Barnsbury's most prestigious addresses, only moments from the greenery of Lonsdale Square gardens. Accommodation is well balanced and comprises; a grand entrance hallway complete with ornate coving, beautiful stained glass fan light and corbels, with multiple ceiling roses, which leads to the dual reception space on the raised ground floor. The space is bathed in sunlight courtesy of the high ceilings, dual aspect and retains original marble fireplaces, coving and ceiling roses. The kitchen/dining space is housed on the lower level, and provides access to the courtyard, which in turn leads up to the secluded rear garden, which has as an additional access point from the hallway. The principal bedroom occupies the front of the first floor, enjoying fabulous proportions and retains floor to ceiling windows, coving and ceiling rose. The family bathroom is set behind. There are two double bedrooms on the top floor, along with an additional storage space on the upper half landing. Further transport providing excellent links around London can be found nearby at Angel Station (Northern Line); Highbury & Islington Station (National Rail & Victoria Line); Barnsbury Station (London Overground); and Caledonian Road Station (London Overground and Piccadilly Line) with trains through the West End and out to Heathrow. The buzz of Upper Street is only a short walk away. Celebrated gastropubs The Duchess of Kent, The Albion and The Drapers Arms can be found locally within Barnsbury, and the incredibly popular restaurant/café Sunday is situated just up the road.

Tenure: Freehold

Local Authority: Islington Council

Council Tax Band: G

Chestertons Islington Sales

327-329 Upper Street

Islington

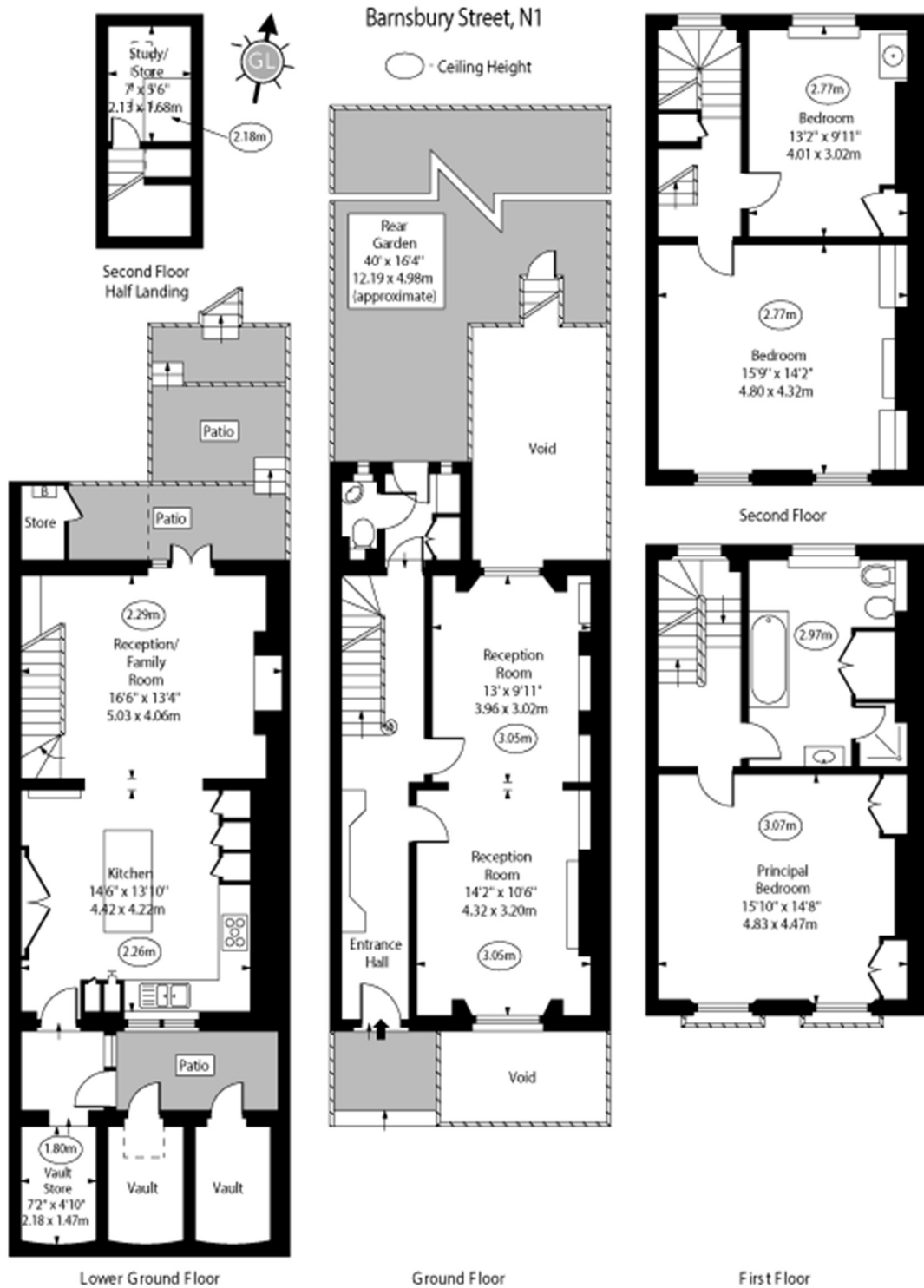
London

N1 2XQ

islington@chestertons.co.uk

020 7359 9777

chestertons.co.uk



Approx Gross Internal Area 1920 Sq Ft - 178.37 Sq M

(Excluding External Vaults & Store)

For Illustration Purposes Only - Not To Scale

www.goldlens.co.uk

Ref. No. 023969M

Chesterton Global Ltd trading as Chestertons for themselves and for the vendor of this property whose agents they are, give notice that (i) these particulars do not constitute any part of an offer or contract, (ii) all statements contained within these particulars are made without responsibility on the part of Chestertons or the vendor, (iii) whilst made in good faith, none of the statements contained within these particulars are to be relied upon as a statement or representation of fact, (iv) any intending purchasers must satisfy themselves by inspection or otherwise as to the correctness of each of the statements contained within these particulars, (v) the vendor does not make or give either Chestertons or any person in their employment any authority to make or give representation or warranty whatsoever in relation to this property. Wide angle lenses may be used. ©Copyright Chestertons | Chesterton Global Ltd | Registered Office 40 Connaught Street, Hyde Park, London W2 2AB Registered Company Number 05334580.



This paper is 100% recyclable