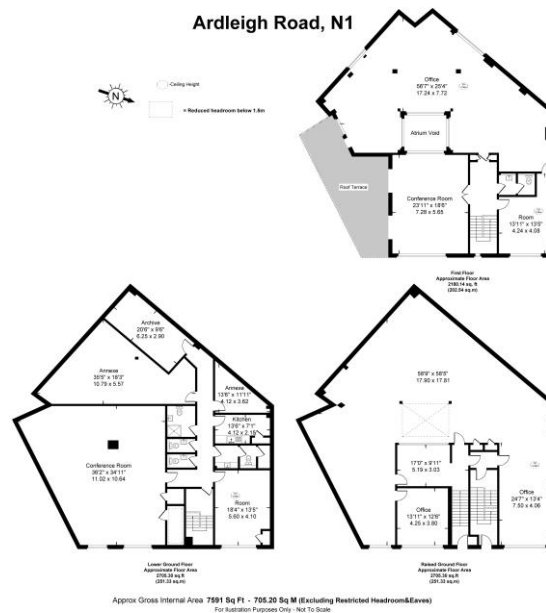


Ardleigh Road

A substantial (7,500sq ft) building currently being used as an office, class use E1. The building may be suitable for a plethora of different purposes including investment/ development, etc (all Subject To Planning).

CHESTERTONS



Tenure: Freehold

Asking Price £2,500,000

Local Authority: London Borough Of Hackney

Chestertons Islington Sales

327-329 Upper Street
Islington
London
N1 2XQ
islington@chestertons.co.uk
020 7359 9777
chestertons.co.uk

Chesterton Global Ltd trading as Chestertons for themselves and for the vendor of this property whose agents they are, give notice that (i) these particulars do not constitute any part of an offer or contract, (ii) all statements contained within these particulars are made without responsibility on the part of Chestertons or the vendor, (iii) whilst made in good faith, none of the statements contained within these particulars are to be relied upon as a statement or representation of fact, (iv) any intending purchasers must satisfy themselves by inspection or otherwise as to the correctness of each of the statements contained within these particulars, (v) the vendor does not make or give either Chestertons or any person in their employment any authority to make or give representation or warranty whatsoever in relation to this property. Wide angle lenses may be used. ©Copyright Chestertons | Chesterton Global Ltd | Registered Office 40 Connaught Street, Hyde Park, London W2 2AB Registered Company Number 05334580.

